



Your CMP account number:
441-100-3669-011



CMP customer assistance line
Monday - Friday 7:30 - 5:00
1-800-565-3181
To report a power outage: 1-800-696-1000



TOWN OF FALMOUTH
STREET LIGHTS
FALMOUTH ME
Service location

Billing date: 12/03/15

Read cycle: 20

Page 001 of 003

Customer Meter Summary

Meter Number	Read Date	Prior Read Date	Number of Days	Meter Reading	Prior Meter Reading	Total KWH
ST LIGHTS	11/28/15	10/28/15	31			

Account Summary

Prior balance						\$8,717.57
Payments received through 12/03/15 - thank you				\$8,717.57-		
Balance forward						\$0.00
New charges						
Electricity Delivery: Central Maine Power (see detail below)				\$6,513.00+		
Electricity Supply: Constellation Energy Svc Inc (see page 3)				\$2,233.65+		
Total new charges						\$8,746.65

Current Account Balance:

Please pay before 12/30/15

\$8,746.65

Central Maine Power Delivery Service Account Detail

Prior balance for Central Maine Power delivery						\$6,513.00
Payments received - thank you				\$6,513.00-		
Balance forward						\$0.00

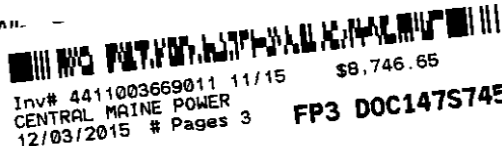
Current delivery charges

Delivery Charges: Street Lights

Sodium Enclosed 50W	149 units @	\$9.21			
Delivery Service	149 units @	\$1.17		\$174.33+	
Lighting Equipment	149 units @	\$8.04		\$1,197.96+	
Sodium Enclosed 70W	159 units @	\$10.04			
Delivery Service	159 units @	\$1.72		\$273.48+	
Lighting Equipment	159 units @	\$8.32		\$1,322.88+	
Sodium Enclosed 100W	34 units @	\$11.07			
Delivery Service	34 units @	\$2.33		\$79.22+	
Lighting Equipment	34 units @	\$8.74		\$297.16+	
Sodium Enclosed 150W	15 units @	\$12.64			
Delivery Service	15 units @	\$3.50		\$52.50+	
Lighting Equipment	15 units @	\$9.14		\$137.10+	
Sodium Post Top 100W	90 units @	\$11.45			
Delivery Service	90 units @	\$2.33		\$209.70+	
Lighting Equipment	90 units @	\$9.12		\$820.80+	
Sodium Cut Off 150W	3 units @	\$13.61			
Delivery Service	3 units @	\$3.50		\$10.50+	

Please see next page for continued detail information.

Please return this stub with payment to CMP business days for processing. Do not ser do not return with staples or paper clips. fill in information for mail address change for the Automatic Payment Option plan.



Inv# 4411003669011 11/15
CENTRAL MAINE POWER
12/03/2015 # Pages 3

FP3 DOC147S745

Your CMP account number:
441-100-3669-011



Central Maine Power
PO Box 847810
Boston, MA 02284-7810

Please pay this amount
\$8,746.65
before 12/30/15 so you
can avoid late charges

SP 01 000240 04943 B 3 BSNGLP
TOWN OF FALMOUTH
C/O PUBLIC SAFETY DEPARMENT
2 MARSHALL DR
FALMOUTH ME 04105-1444

Please write
amount paid:



\$
Thank you !

Please do not write below this line

971203154411003669011000874665

000240 1/2



Central Maine Power Delivery Service Account Detail

(continued from previous page)

Lighting Equipment	3 units @	\$10.11	\$30.33+
Sodium Cut Off 70W	53 units @	\$10.76	
Delivery Service	53 units @	\$1.72	\$91.16+
Lighting Equipment	53 units @	\$9.04	\$479.12+
Sodium Cut Off 50W	76 units @	\$10.84	
Delivery Service	76 units @	\$1.17	\$88.92+
Lighting Equipment	76 units @	\$9.67	\$734.92+
Sodium Cut Off 100W	17 units @	\$11.45	
Delivery Service	17 units @	\$2.33	\$39.61+
Lighting Equipment	17 units @	\$9.12	\$155.04+
Special facilities			\$318.27+
Delivery Service Charge			\$1,019.42+
Lighting Equipment Charge			\$5,175.31+
Total current delivery charges			\$6,513.00
Central Maine Power account balance			\$6,513.00

Messages about your Central Maine Power delivery account

This account is tax exempt.

Customer information for your delivery service

Delivery rates are as approved by the Maine Public Utilities Commission. For bills that cover both electricity supply and CMP delivery, CMP forwards energy-supply payments to the appropriate energy provider. For a schedule of CMP delivery rates, call 1-800-565-3181, or visit www.cmpco.com on the Internet. Our TTY number for the deaf is: 1-800-445-5631.

CMP's delivery role under Maine law

The State of Maine changed the electricity-utility business as of March 1, 2000. The law now separates electric supply from its delivery. You may choose a competitive energy provider, or automatically take energy from the Standard Offer provider. CMP no longer generates electricity. We operate the system that delivers your electricity, and we service your account.

Questions?

To ask a question or dispute a bill, you can call 1-800-565-3181 or e-mail customer.service@cmpco.com, or write to CMP Customer Service, 83 Edison Drive, Augusta, ME 04336.

Planning a move?

Please let us know. You are responsible for any usage at your billing location until you tell us the account should be closed.

Payment arrangements

If you have trouble paying your bill, a payment plan may help. Call 1-800-565-3181 for more information.

Late-payment charge

Bills are due on receipt. A late charge of 0.892% will be applied each month to balances unpaid after 25 days from bill postmark.

To report an outage

Call 1-800-696-1000. If call volume is heavy, an automated system will log your call and generate a repair order.

Sales-tax exemption

Maine sales tax does not apply to the first 750 kilowatt-hours (KWH) of residential usage.

What's a kilowatt-hour?

Electric power is measured in watts. 1000 watts of power used for 1 hour is a kilowatt-hour (KWH) of energy. Example: a 100 watt bulb lit for 10 hours uses 1 KWH of energy.

Estimated Bills

When we cannot read your meter, we will estimate your usage for the month. You have the right to read your own meter. Call us at 1-800-565-3181 or visit www.cmpco.com for more information.

Mail Address Changes



Please "X" for mail address changes and fill in your new mailing address information below:

If you are moving or need to stop service....

Please call a Customer Representative at 1-800-750-4000



To sign up for automatic payments, please mark an "X" in the box, and sign and date below:

Signed: _____ Date: _____

Pay my bill (check one): _____ when my bill arrives **OR**
_____ # of days **before due date** (circle one below)

4 5 6 7 8 9 10 11 12 13 14 15 16 17 18 19 20 21 22 23

(Example: Circle "15" to pay your bill 15 days **before the due date**. )

It does NOT mean your bill will be paid on the 15th of each month.)

To complete your enrollment, please:

1. Include a **VOIDED** check with this pay stub.
2. Allow up to 30 days for processing.

Please do not write below this line

Your INTEG account 3109558
 Billing date: 12/03/15
 Phone: 1-877-838-0454
 Hours: Mon through Fri - 8AM TO 5PM

TOWN OF FALMOUTH
 STREET LIGHTS
 FALMOUTH ME

Page 003 of 003

Electricity Supply Account Detail

Your electricity is supplied by:
 Constellation Energy Svc Inc

Prior balance for Constellation Energy Svc Inc electricity

\$2,204.57- \$2,204.57

Payments received - thank you

\$0.00

Balance forward**Current electricity supply charges**

Rate CC480 (10/29/15-11/28/15)					
Unmetered Service	4074	KWH @	.093800	\$382.14+	
Rate CC480 (10/29/15-11/28/15)					
Unmetered Service	6355	KWH @	.093800	\$596.10+	
Rate CC480 (10/29/15-11/28/15)					
Unmetered Service	1859	KWH @	.093800	\$174.37+	
Rate CC480 (10/29/15-11/28/15)					
Unmetered Service	1231	KWH @	.093800	\$115.47+	
Rate CC480 (10/29/15-11/28/15)					
Unmetered Service	4922	KWH @	.093800	\$461.68+	
Rate CC480 (10/29/15-11/28/15)					
Unmetered Service	246	KWH @	.093800	\$23.07+	
Rate CC480 (10/29/15-11/28/15)					
Unmetered Service	2118	KWH @	.093800	\$198.67+	
Rate CC480 (10/29/15-11/28/15)					
Unmetered Service	2078	KWH @	.093800	\$194.92+	
Rate CC480 (10/29/15-11/28/15)					
Unmetered Service	930	KWH @	.093800	\$87.23+	

\$2,233.65

Total current electricity supply charges

\$2,233.65

Constellation Energy Svc Inc account balance

Messages about your Constellation Energy Svc Inc electricity supply

Central Maine Power provides billing services for your electricity supplier. Supply payments are forwarded on your behalf, in accordance with the Maine Public Utilities Commission (MPUC) rules.

The average price per KWH for your electricity supply is \$0.093799.

