

Falmouth Route One Infrastructure / Streetscape Project

**Public Presentation
September 18, 2013**

INTRODUCTION

- Town Vote June 2013
- Issue of an RFP
- The Team – FST and TJD&A

PROJECT OVERVIEW

- Recap of the Concept Plan
- Utility Discussion
- Business Owner Meetings



ENGINEERS
FST
 Since 1914

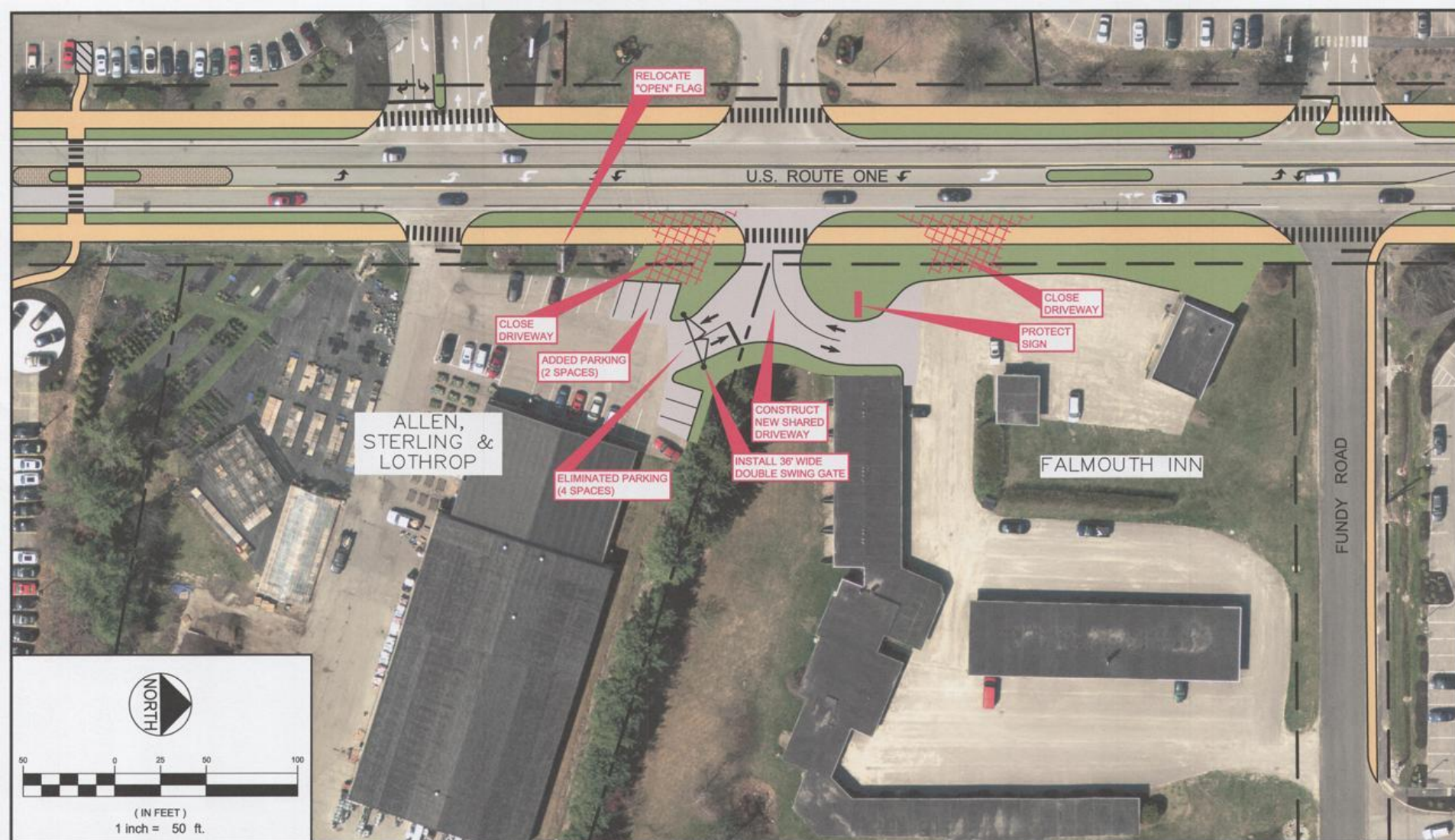
FAY, SPOFFORD & THORNDIKE, INC.
 ENGINEERS · PLANNERS · SCIENTISTS
 778 MAIN ST, SUITE 8, SOUTH PORTLAND, ME 04106

DRAWN:	CDD	DATE:	SEPT. 2013
DESIGNED:	RJW	SCALE:	AS NOTED
CHECKED:	JAL	JOB NO.	SF-M091
FILE NAME:	SF-M091-BASE		

**ROUTE 1 INFRASTRUCTURE PROJECT
 FALMOUTH, MAINE**

**CONCEPTUAL INTER-PARCEL DRIVEWAY PLAN
 FALMOUTH VETERINARY HOSPITAL / WALDO'S**

FIGURE
1



ENGINEERS
FST
Since 1914

FAY, SPOFFORD & THORNDIKE, INC.
ENGINEERS · PLANNERS · SCIENTISTS
778 MAIN ST, SUITE 8, SOUTH PORTLAND, ME 04106

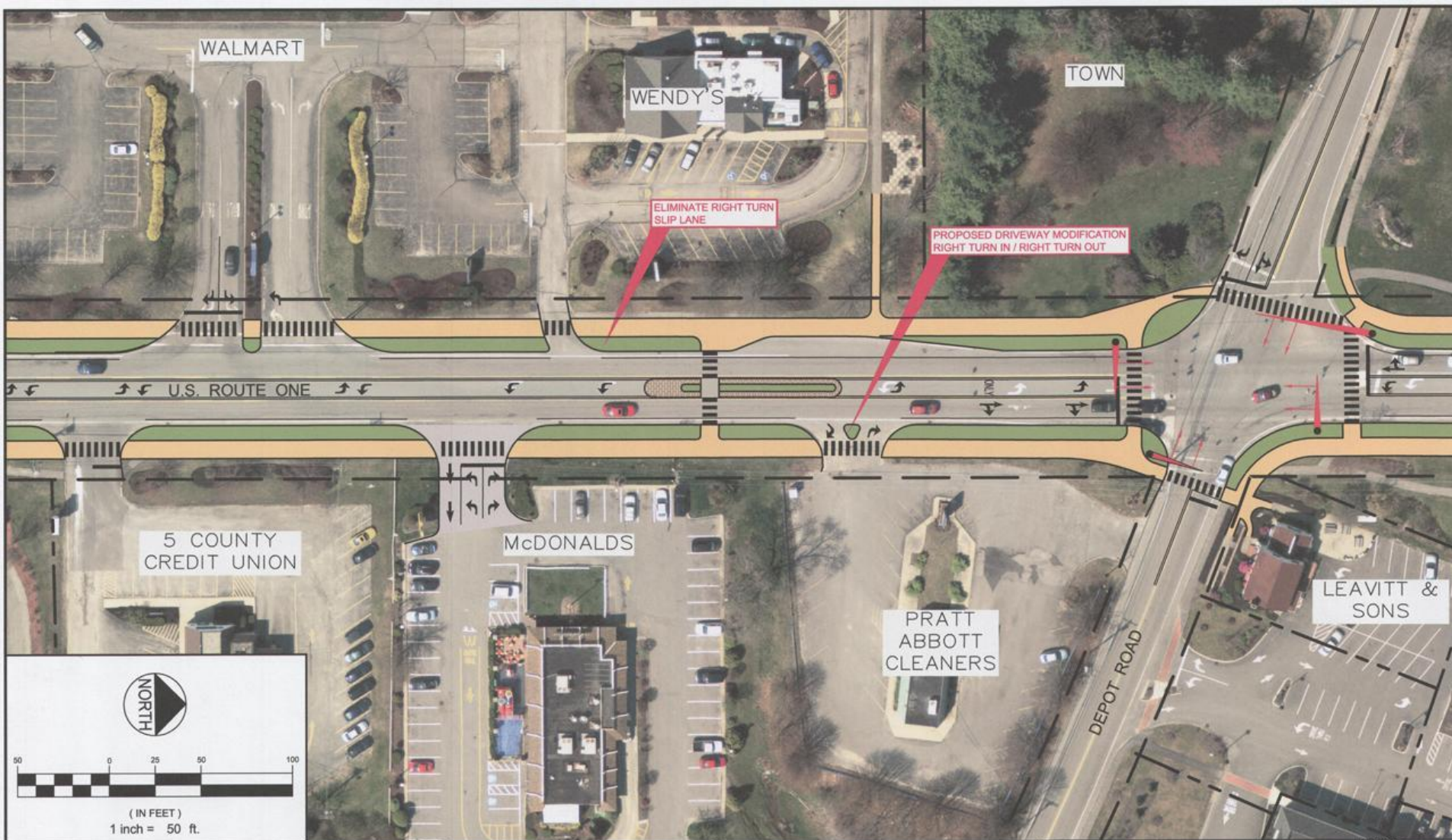
DRAWN:	CDD	DATE:	SEPT. 2013
DESIGNED:	RJW	SCALE:	1" = 50'
CHECKED:	JAL	JOB NO.	SF-M091
FILE NAME:	SF-M091-BASE		

ROUTE 1 INFRASTRUCTURE PROJECT
FALMOUTH, MAINE

CONCEPTUAL INTER-PARCEL DRIVEWAY PLAN
ALLEN, STERLING & LOTHROP / FALMOUTH INN

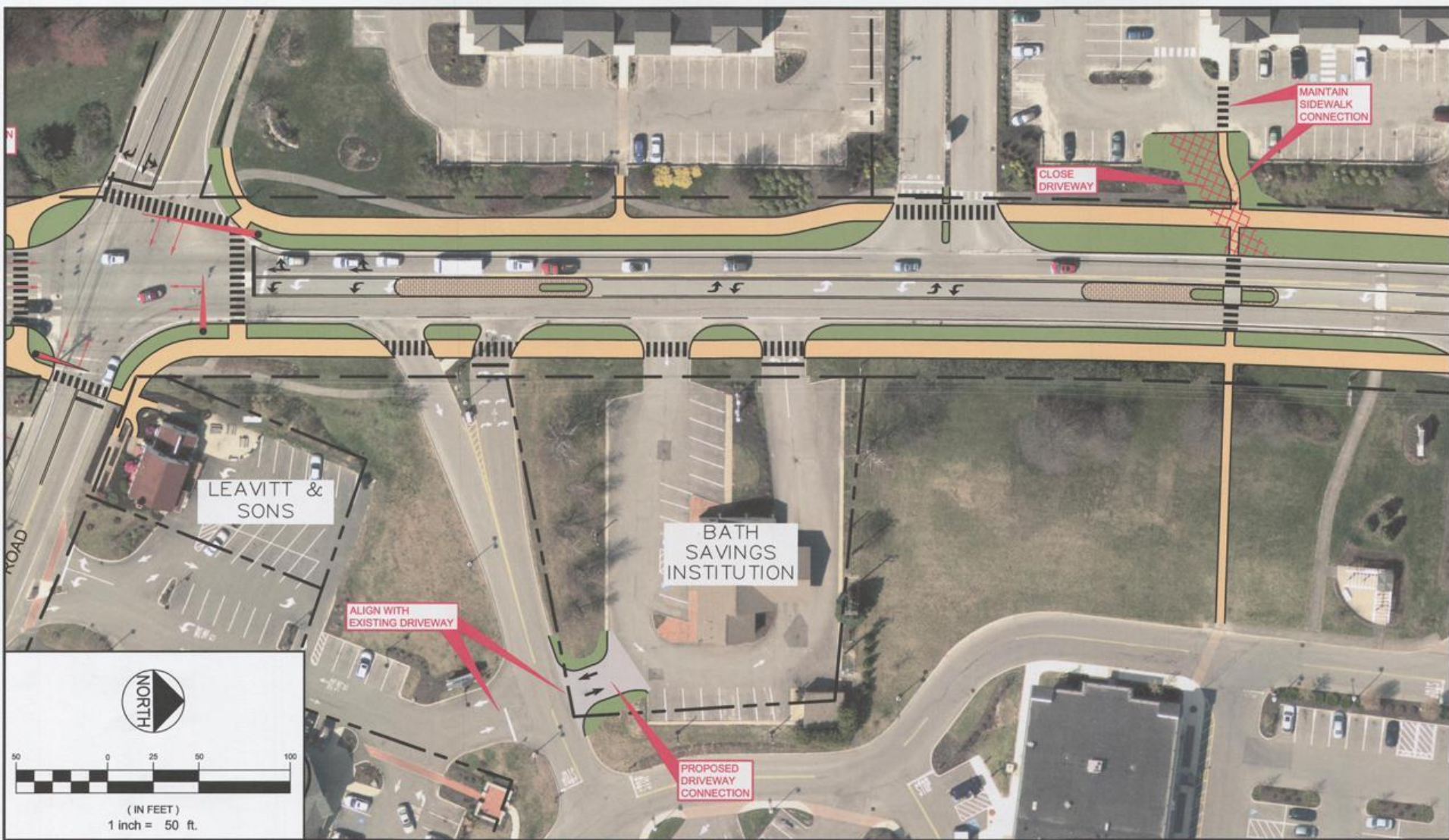
FIGURE

1



ENGINEERS FST <small>Since 1914</small>	FAY, SPOFFORD & THORNDIKE, INC. ENGINEERS · PLANNERS · SCIENTISTS 778 MAIN ST, SUITE 8, SOUTH PORTLAND, ME 04106		DRAWN:	CDD	DATE:	SEPT. 2013	ROUTE 1 INFRASTRUCTURE PROJECT FALMOUTH, MAINE	CONCEPTUAL IMPROVEMENT PLAN PRATT ABBOTT / WENDY'S	FIGURE 1
			DESIGNED:	RJW	SCALE:	AS NOTED			
			CHECKED:	JAL	JOB NO.	SF-M091			
			FILE NAME:	SF-M091-BASE					

R:\SF-M091 Falmouth, ME Route 1\Cadd\Concept Set\dwg\SF-M091-BASE.dwg dube_c 9/17/2013 5:49 PM



ENGINEERS
FST
Since 1914

FAY, SPOFFORD & THORNDIKE, INC.
ENGINEERS · PLANNERS · SCIENTISTS
778 MAIN ST, SUITE 8, SOUTH PORTLAND, ME 04106

DRAWN:	CDD	DATE:	SEPT. 2013
DESIGNED:	R/JW	SCALE:	AS NOTED
CHECKED:	JAL	JOB NO.	SF-M091
FILE NAME:	SF-M091-BASE		

ROUTE 1 INFRASTRUCTURE PROJECT
FALMOUTH, MAINE

CONCEPTUAL IMPROVEMENT PLAN
BATH SAVINGS / FALMOUTH VILLAGE

FIGURE

1

STREETSCAPE AMENITIES

The objective is to create a pedestrian friendly village setting that is inviting and safe.

- Lighting
- Benches
- Bus Shelter
- Center Medians
- Banners / Gateways

LIGHTING

Pendant fixture
Ped scale
14' MH
75' spacing

Pendant fixture
Street Light
23' MH
280' spacing
140' stagger



LIGHTING

Acorn Ped fixture







CLEARWATER DR

CARRIAGE HOUSE SQUARE

WALMART

U.S. ROUTE ONE

5 COUNTY CREDIT UNION

SUBWAY/
DUNKIN
DONUTS

NGOR



BENCHES

Contemporary / Modern?
Metal / Wood?
Back / No Back?
Arms / no Arms?



BUS SHELTERS



STREET TREES

Tall Columnar Deciduous Trees

Med. Size – Flowering as Gateway or Statement



CENTER MEDIANS



Northern Gateway



Northern Gateway





FALMOUTH FALL CLASSIC

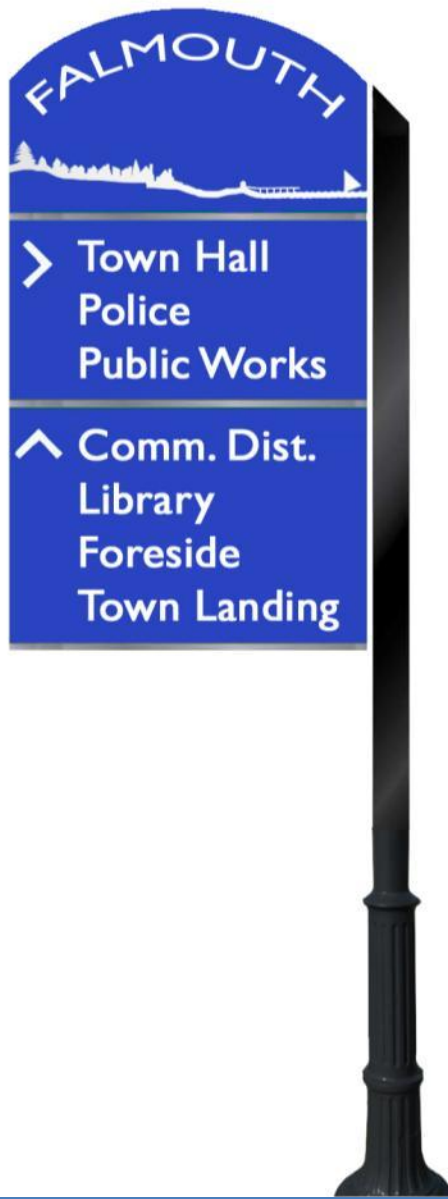
October 12 - 14



170

ROUTE 1

WAYFINDING AND SIGNAGE



Vehicular Directional

WHAT'S NEXT?

- September:
 - Continued Business Owner Meetings
 - Plan Refinements
- October 17: Public Meeting at Library
 - Draft Final Plan
- November TBD: Council Presentation

CONSTRUCTION SCHEDULE

- Winter 2014: Construction Bidding
- Spring-Fall 2014: Construction of all Route One Corridor Improvements
- 2015: New Route One paving by Maine DOT

Q&A

- Are we on the right track?
- Are we missing anything?