

## Falmouth Fire-EMS Operating Guideline

### Chain of Command

#### Objective:

To provide a clear understanding on the chain of command used by Falmouth Fire-EMS.

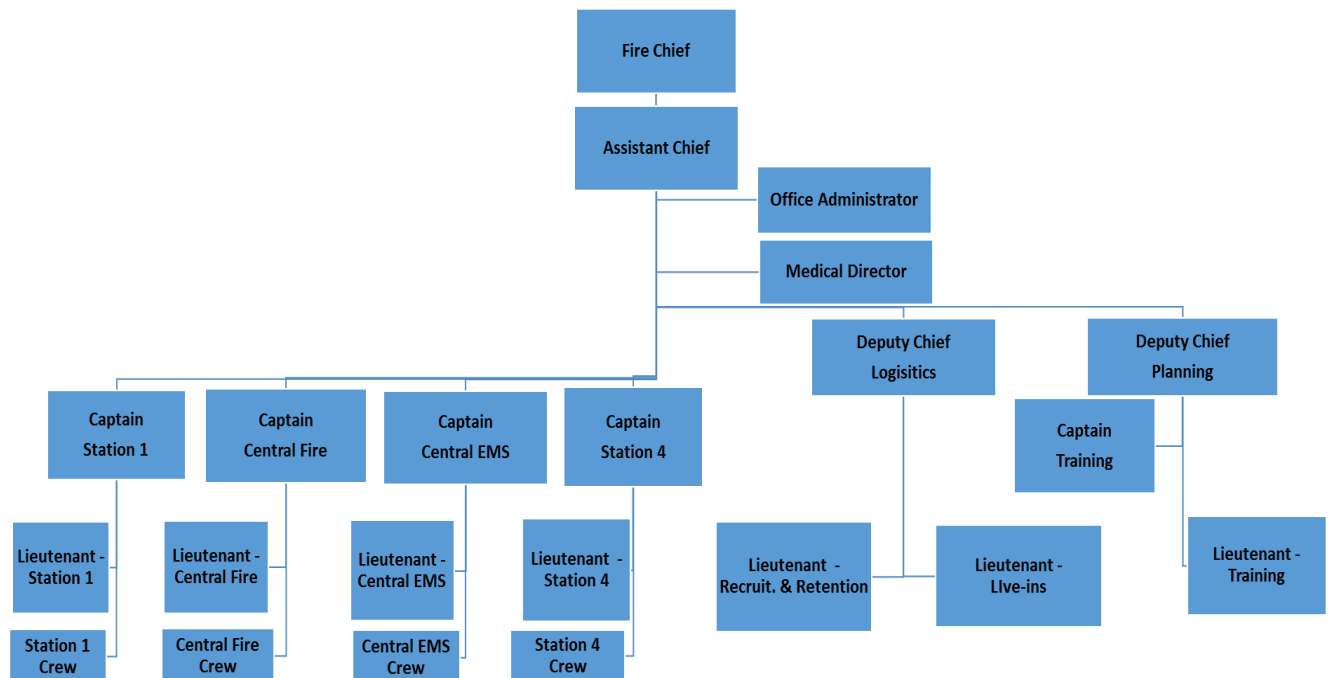
#### General Information:

Falmouth Fire-EMS uses a chain of command, where every member has a clear supervisor. Through the supervisor, each member can follow the path that leads to the Fire Chief. If a member is not able to reach their supervisor, then they can go to the next level of supervision, which is the person listed directly above their supervisor.

#### Guidelines:

All members will follow the chain of command as outlined in the organizational chart for the department.

#### Organizational Chart:



These guidelines may be changed or altered by the Fire Chief at any time.