



Brightline
BES Initiative

Brightline Bulk Electric System (BES) Initiative

Falmouth

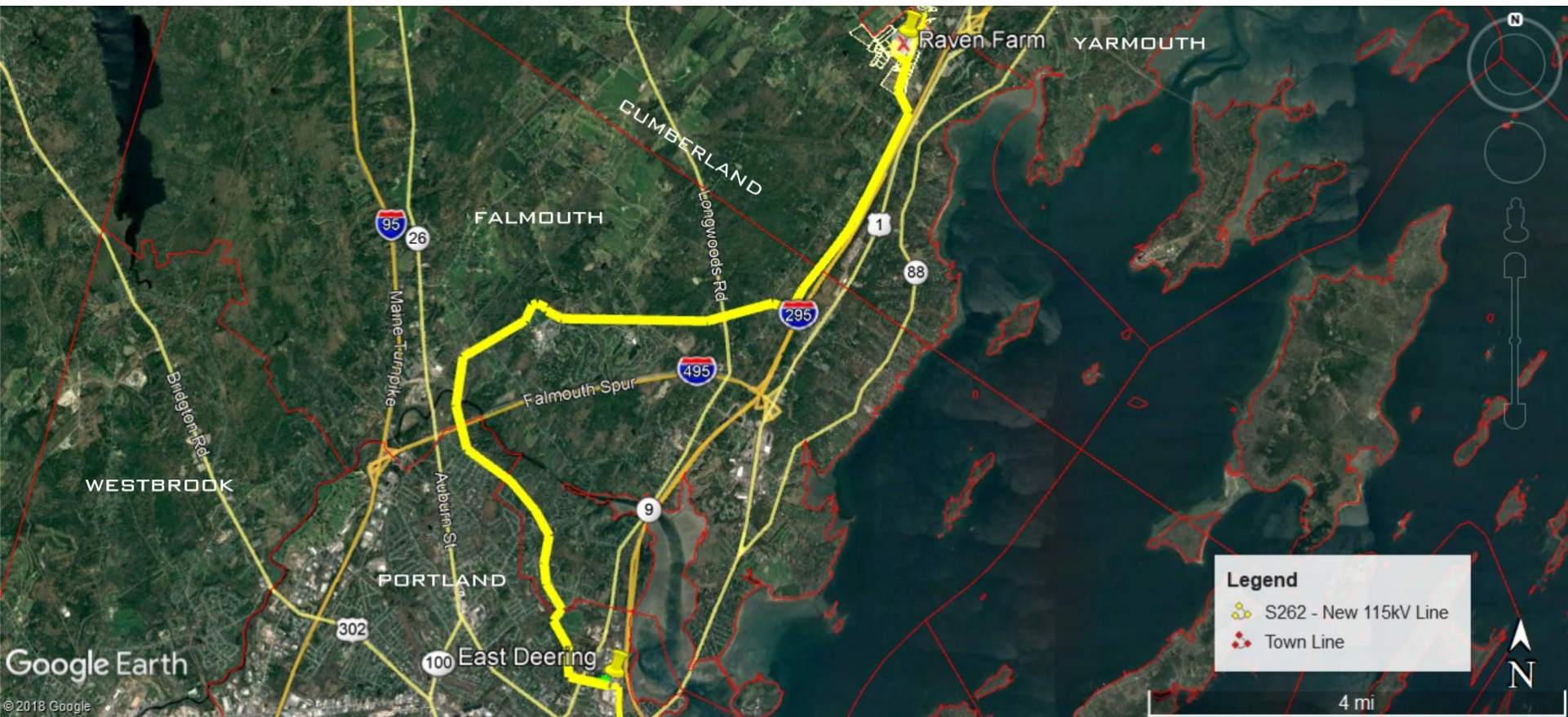
Bulk Electric System (BES) Program – Purpose & Need

- Energy grid upgrades to comply with new state and federal standards for reliability
- Multi-year initiative through 2022
- Numerous projects (large and small) from Augusta to Kittery
- Projects include new & upgrades to substations and transmission lines, some acquisition of additional rights-of-way, new conductors on existing poles, clearing in existing rights of way, new taller poles ***including those in the existing transmission corridor in Falmouth***
- Project incorporates non-transmission alternatives (NTAs), which could include load reduction, energy efficiency, battery storage, distributed generation. NTA's associated with this project will be implemented if they provide a cost-effective, reliable alternative to poles and wires
- BES Program will result in a more robust and resilient energy grid to support the growing needs of communities and the energy demands of the economy, including the growth of renewable energy

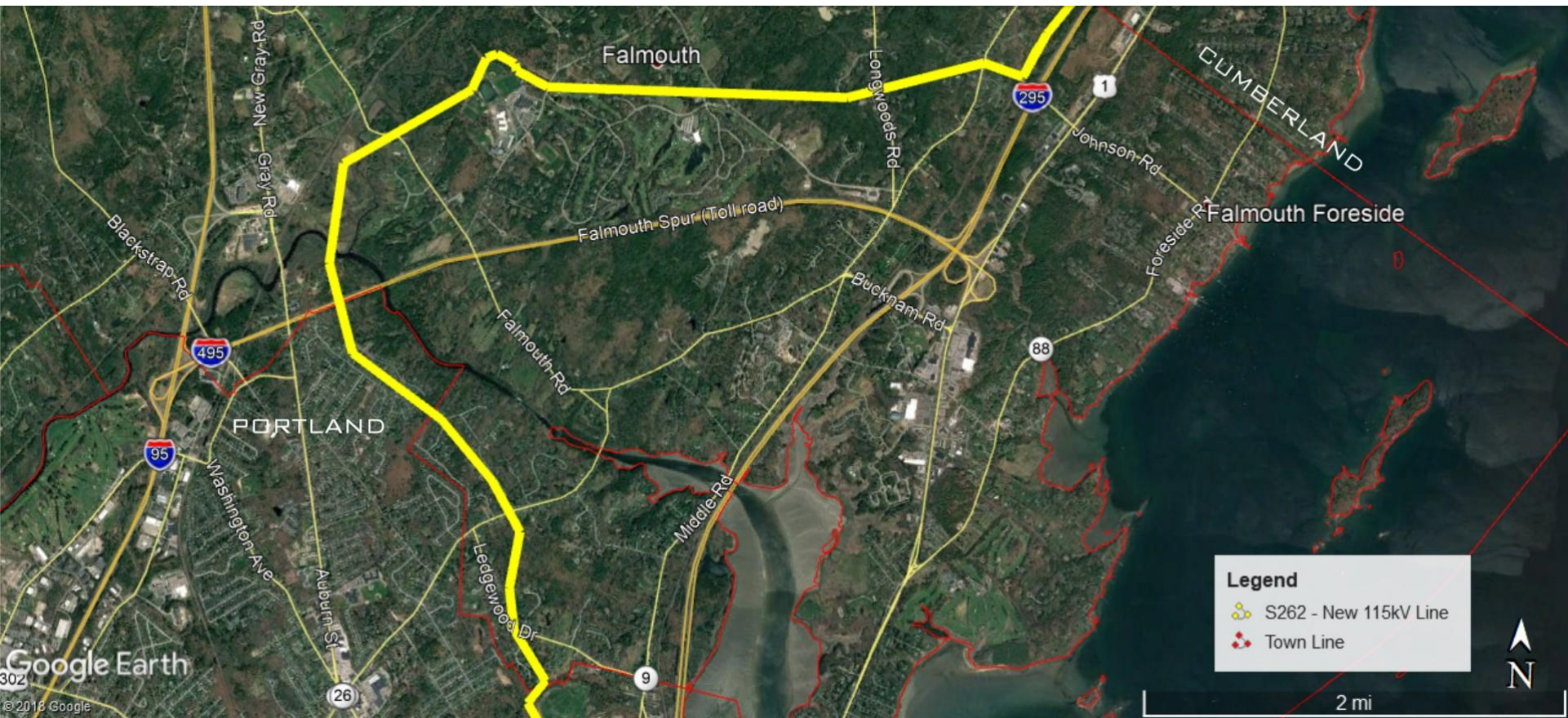
Transmission upgrades from Raven Farm in Cumberland to East Deering in Portland

- 6 miles of upgrades in Falmouth will take place along existing right-of-way
- Poles will be taller: from approximately 50' to approximately 90'
- Adding a new 115 kV line on these poles

BES Program – Raven Farm to Portland Route



BES Program – Falmouth Route



Visual Simulation – Existing Pole vs New Pole



Existing Conditions: View looking southeast from Middle Road in Cumberland toward the existing Section 180 34.5 kV transmission structure, railroad, and Interstate 95.



Proposed Conditions: View looking southeast from Middle Road in Cumberland toward the proposed Section 180 and 262 115 kV transmission structure and conductors. The proposed wood structure will be 79' high.

Visual Simulation – Existing Pole vs New Pole



Existing Conditions: Panoramic view looking southeast from Middle Road in Cumberland.



Proposed Conditions: Panoramic view looking southeast from Middle Road in Cumberland toward the proposed Section 180 and 262 115 kV transmission structure and conductors.



Next Steps in Falmouth

- Updates to Town Officials
- Specific Follow Up Steps for Falmouth
 - A. Provide project details as they become available
 - B. Answer any questions from the public
 - C. Other Issues / Suggestions
- Public Outreach
 - Individual meetings with landowners along the route
 - Possible community meeting (before permitting begins)
 - Where & When
 - Email BES updates to interested stakeholders

BES Program

1-866-4CMP BRL