

**Royal Junction Siding Project**  
**Falmouth Town Council**  
**November 14, 2016**





# What Is Our Role?



## NNEPRA Mission

To develop and manage a quality passenger rail system that meets the transportation needs of our customers, delivers value and enhances economic development within the region we serve.

## NNEPRA Vision

To provide our customers with a travel experience that consistently exceeds their expectations, delivers value and benefit and contributes to a modern, integrated public transportation system.





# Our Priorities



- **Passengers**

Excellent service and good value

- **Partnerships**

Stakeholders working together

- **Performance**

Operational and fiscal goals

- **Promotion**

Maximize ridership and revenues

- **Projects**

Investments to improve service

- **Public Benefit**

Economic Development, Quality of Life





# About the Amtrak Downeaster



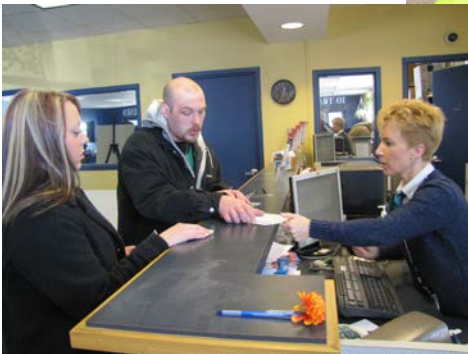
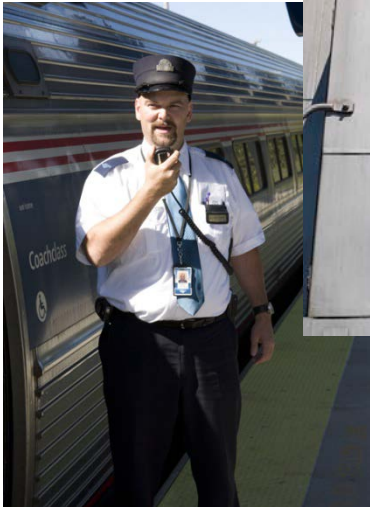
- 5 r/t Boston- Portland
- 2 r/t Boston- Brunswick
- 143 route miles/3 states
- 79 mph maximum authorized speed
- 2 five-car and 1 four-car sets of equipment
- 11 full-time stations
- 1 seasonal stations
- 3 Host Railroads





# Partnerships

**Amtrak** provides train equipment and on-board crews, equipment turnaround and layover servicing, Portland ticket agents and reservation services.





# Partnerships

The Downeaster operates on tracks owned by three host railroads.

The **State of Maine** owns the first mile of track between Brunswick station and Church Road in Brunswick.

**Pan Am Railways** owns the next 106 miles of track from Church Road to Plaistow, NH.

The **MBTA** owns the remaining 36 miles into North Station.





# Partnerships

The Downeaster was the first Amtrak train to independently Contract for on board food service.

The Downeaster Café features Maine made and local products and providing one of the most efficient passenger train food service operations in the nation.





# Partnerships

**Most Downeaster Stations are owned and operated by the communities in which they are located.**

- The Portland Station is a public/private partnership with Concord Coach Lines and the only location with Amtrak ticket agents.
- Most stations are staffed by volunteers or visitor center staff.
- Massachusetts stations are owned by the MBTA.







# Performance



Since December 2001 the Downeaster has transported **5.8 million** riders the equivalent of **473 million** passenger miles and generated **\$87 million** in ticket revenue.

Customer Satisfaction 90%+







# Projects

## Major Capital Investment



### To Date:

- \$63 m initial start of service
- \$6 m to add 5<sup>th</sup> round trip
- \$1m Yard 8 Wye & Bridge
- \$38.3 m Brunswick Expansion
- \$4m Tie Replacement 2015-2016
- \$13 m Brunswick Layover
- \$26 m *Haverhill double-track*
- \$750k Annual Capital Maintenance





# Current Challenges



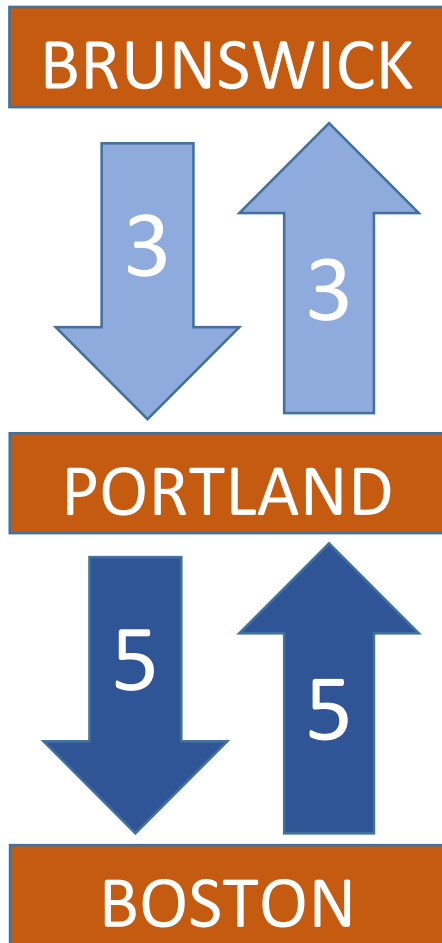
**Despite the successes of the Downeaster, there are still some challenges facing the operation.**

Service to Freeport and Brunswick is limited, there are inefficiencies in the utilization of equipment and crew, on-time performance is unreliable, and the schedule is lacking service in key travel periods.





# Current Operation



**6 Downeaster Trains (3 Round-Trips)** operate each day between **Portland and Brunswick.**

**10 Downeaster Trains (5 Round-Trips)** operate each day between **Portland and Boston.**





# Track Capacity Limited

Between Portland And Brunswick



## Challenges North of Portland

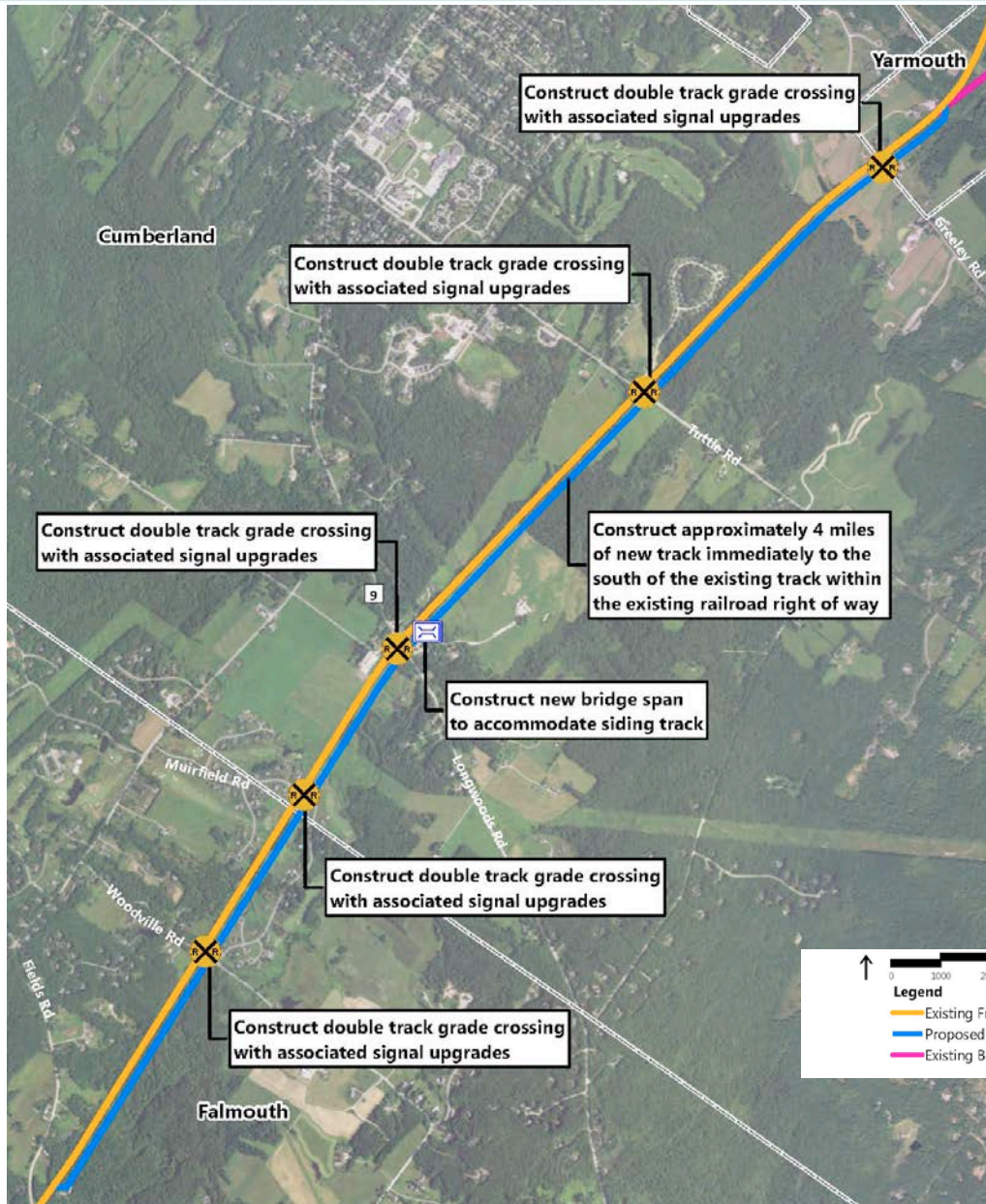
- Mostly single track
- No place for trains to meet or pass
- Additional track infrastructure is required before more passenger trains can be added.



# Royal Junction Siding Project

## Project Overview:

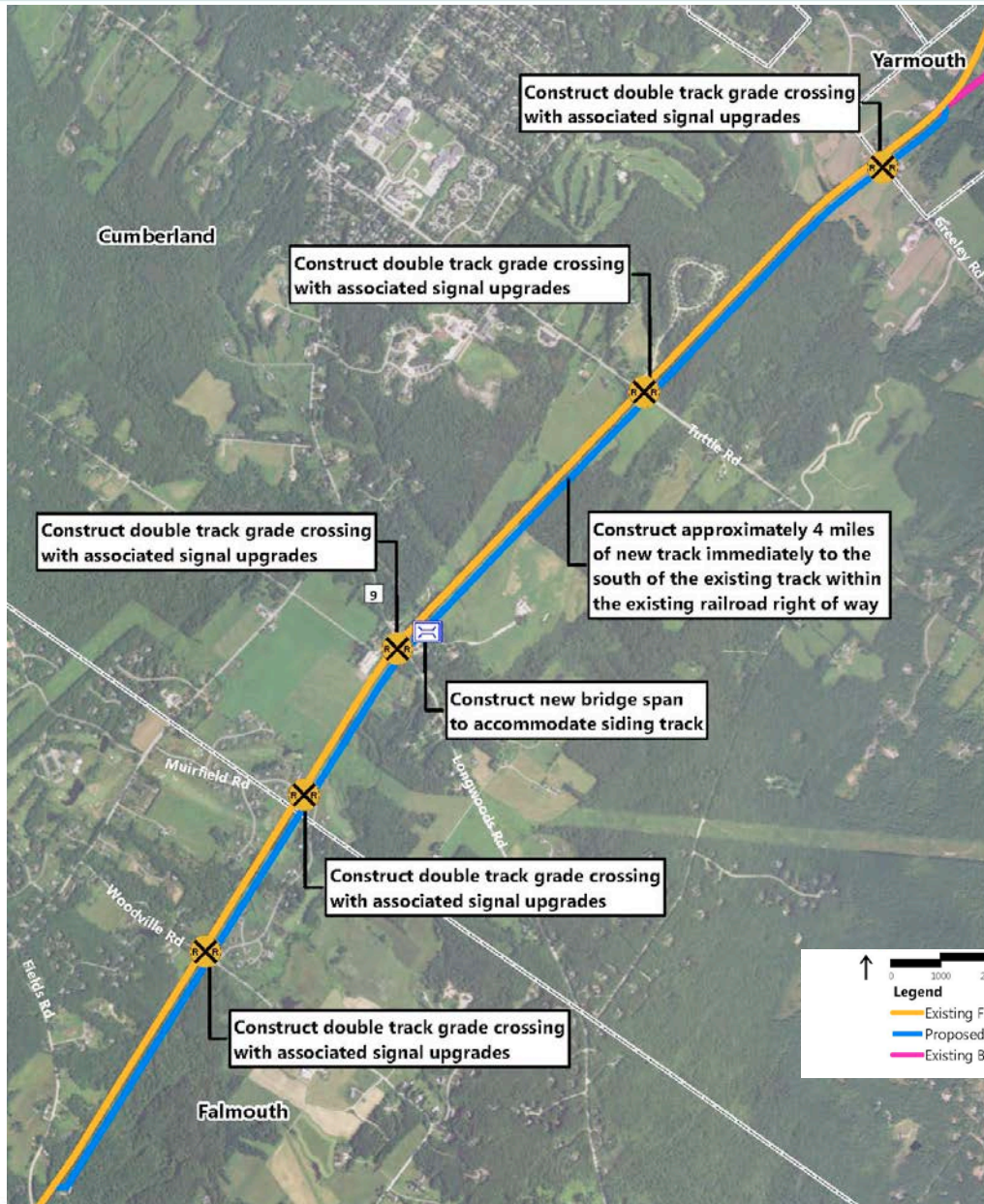
Approximately 4 miles of second track will be installed, within the railroad right of way, starting just north of Fields Road and continuing through Greely Road.



# Royal Junction Siding Project

## Crossings Impacted:

- Woodville Road
- Muirfield Road
- Route 9
- Tuttle Road
- Greely Road

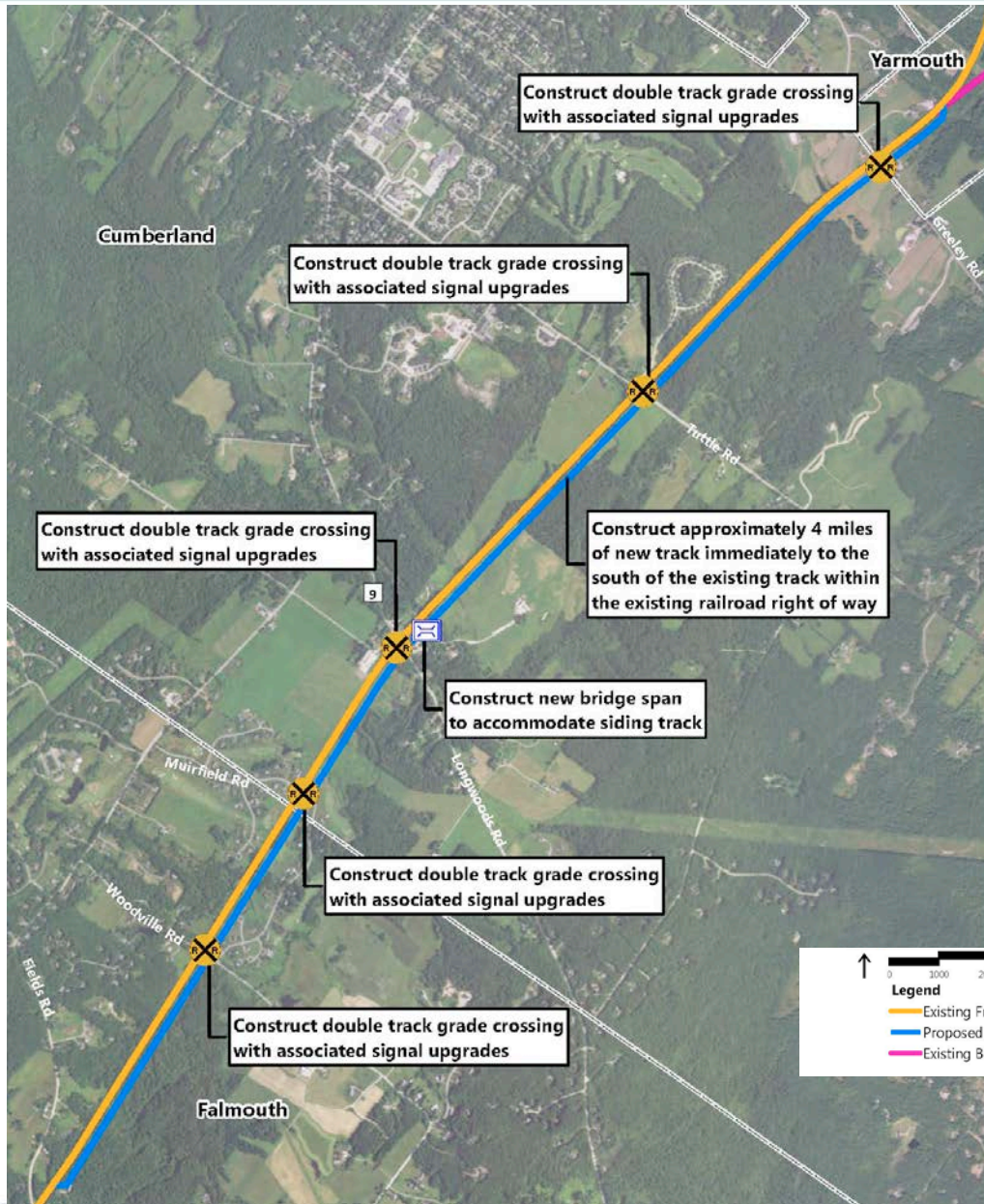




# Royal Junction Siding Project

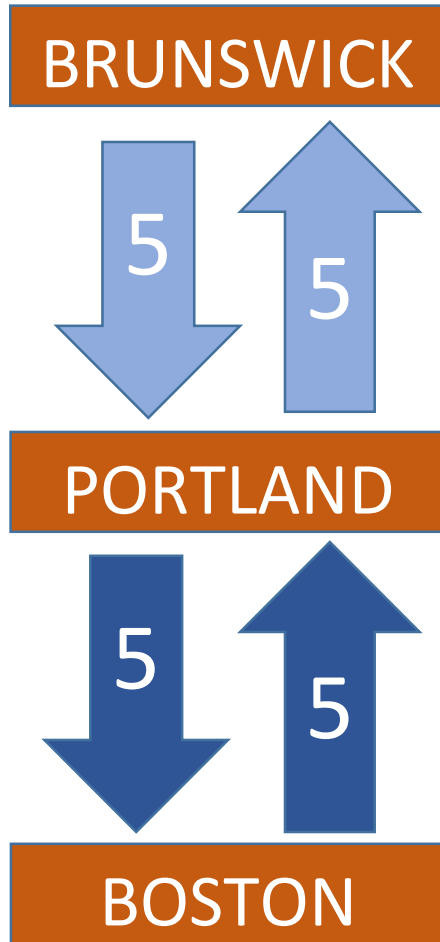
## Project Status:

- Fully Funded
- Construction will begin spring 2017 and last about a year.





# Royal Junction Siding Project



## Results:

- Improved reliability and flexibility for passenger and freight trains.
- 10 Trains (5 Round-trips) between Brunswick and Boston each day.





# It's Time to Take The Train!





**FMI**

## Northern New England Passenger Rail Authority

Patricia Quinn, Executive Director

[patricia@nnepra.com](mailto:patricia@nnepra.com)

207-780-1000 x105

Jim Russell, Special Projects Manager

[james@nnepra.com](mailto:james@nnepra.com)

207-699-9989

[AmtrakDowneaster.com](http://AmtrakDowneaster.com)

[NNEPRA.com](http://NNEPRA.com)

