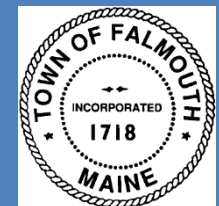


ROUTE 100 COMMITTEE RECOMMENDATIONS



Town Council - January 25, 2016



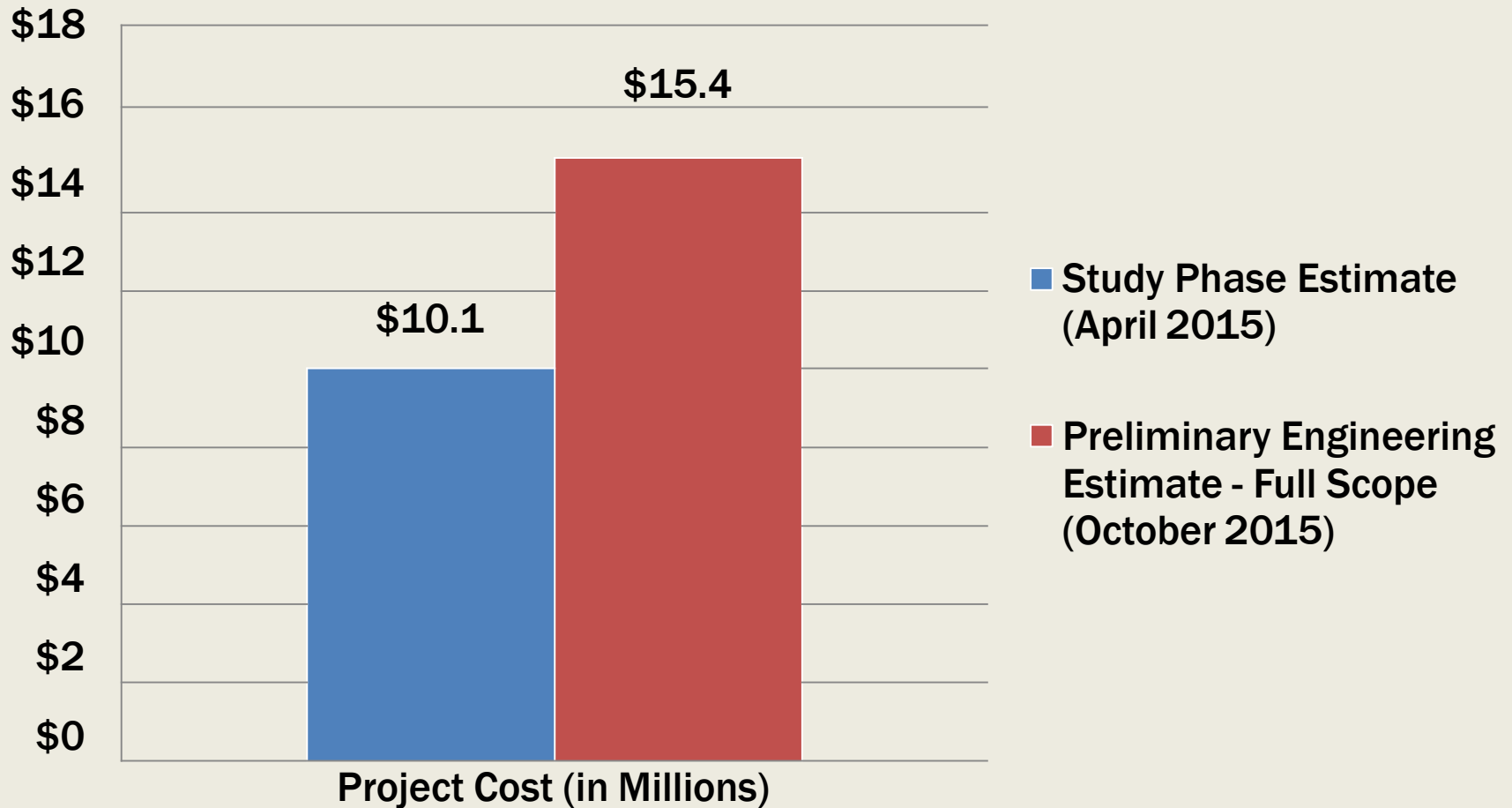
PRESENTATION OVERVIEW

- **Work Completed since August 2015**
- **Recommended Project Costs**
- **Recommended Project Financing**
- **Recommended Scope of Work**
- **Anticipated Project Schedule**

WORK COMPLETED SINCE AUGUST 2015

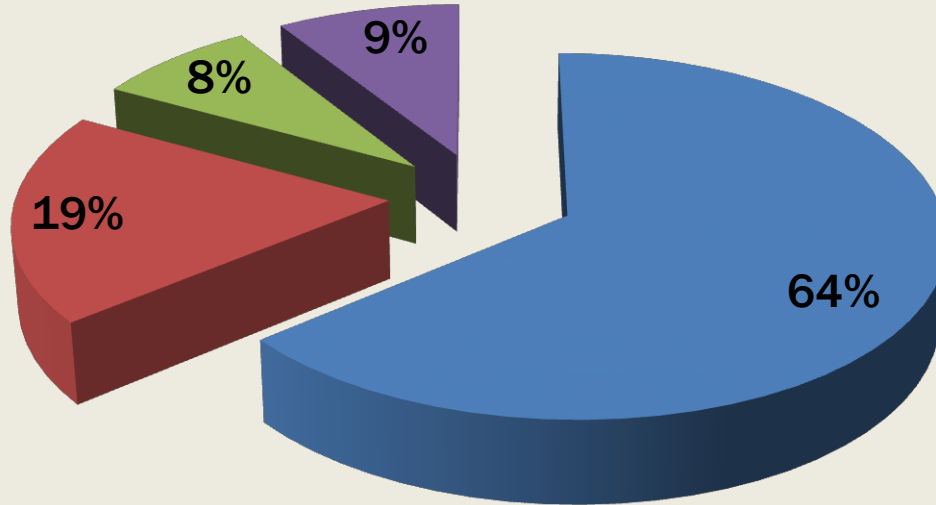
- 10 meetings, incl. 2 forums and 1 site visit
- Issued RFP and selected FST/Stantec
- Conducted Forum in September
- Detailed Preliminary Design & Construction Cost Estimate
- Property Impact & Tree Removal Assessments
- Door-to-Door Property Owner Outreach (33 discussions)
- Conducted Forum 2 in December
- Meeting with MaineDOT Commissioner

OCTOBER 2015 – 50% COST INCREASE



Route 100 Infrastructure Improvements
Town of Falmouth, Maine

REASONS FOR \$5.3M COST INCREASE



- Route 100 from Winslow Farm to Hurricane Road
- Property Rights and MaineDOT Administrative Costs
- 15' Wide Concrete Box Culvert for Fish Passage at Hobbs Creek
- Other Design Details

WINSLOW FARM TO HURRICANE ROAD – COST

- Widening to accommodate Bicycle Lanes
- Existing Concrete Pavement under many layers of asphalt
- Requires Full Road Reconstruction
 - Shallow Ledge Presence
 - Inadequate Surface Drainage
- Studied partial options – not feasible

OCTOBER 2015: \$15.4M PROJECT FINANCING

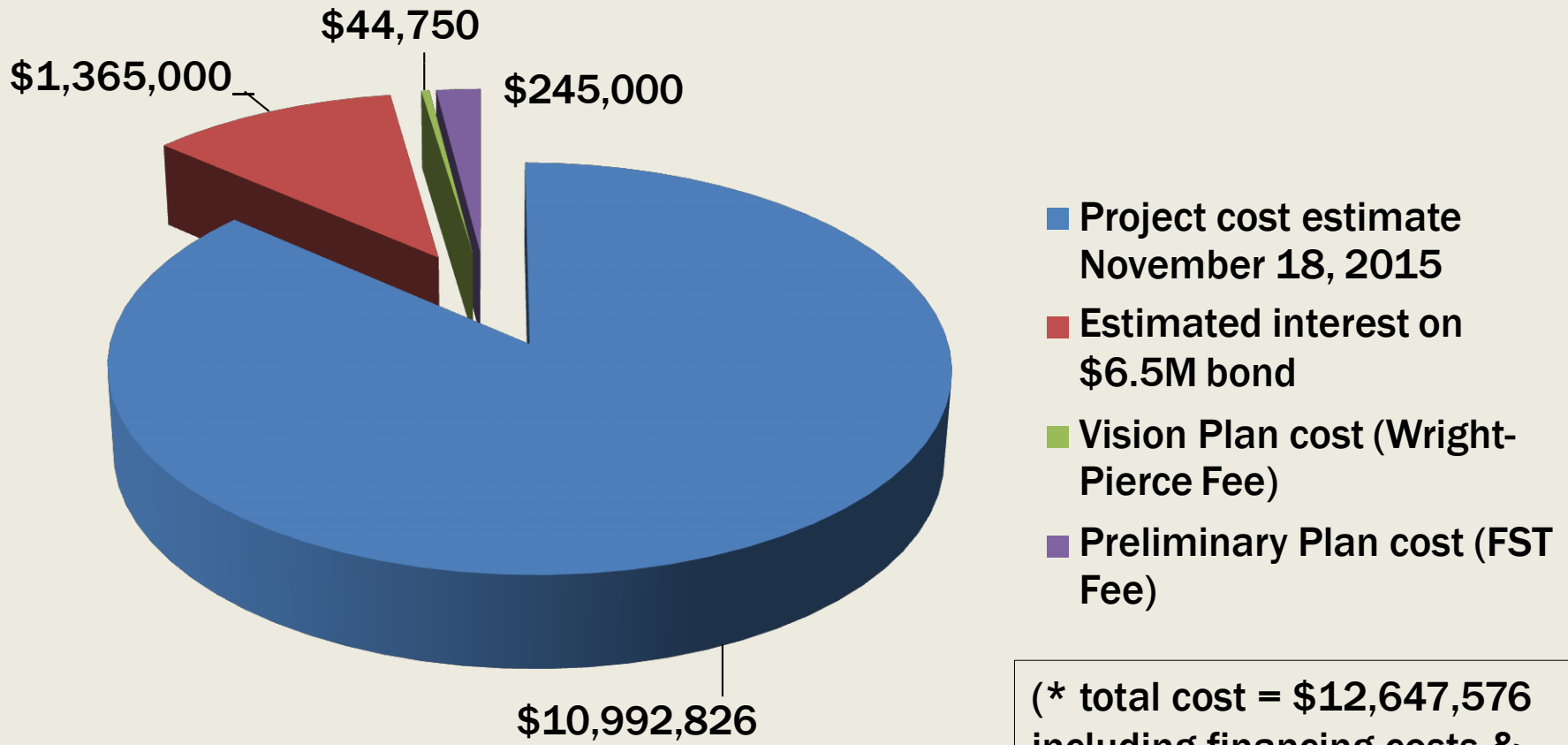
- Typical Town responsibility: \$4.2M
- Typical State responsibility: \$11.2M
- MaineDOT Commitment Increased From \$2.5M to \$4.0M
- Conclusion: Project is only feasible with reduced scope – cut \$4+M

NOVEMBER 2015: REDUCED SCOPE OF WORK



- Remove Winslow Farm to Hurricane Road section from the project (\$4.2M)
 - partial options not feasible

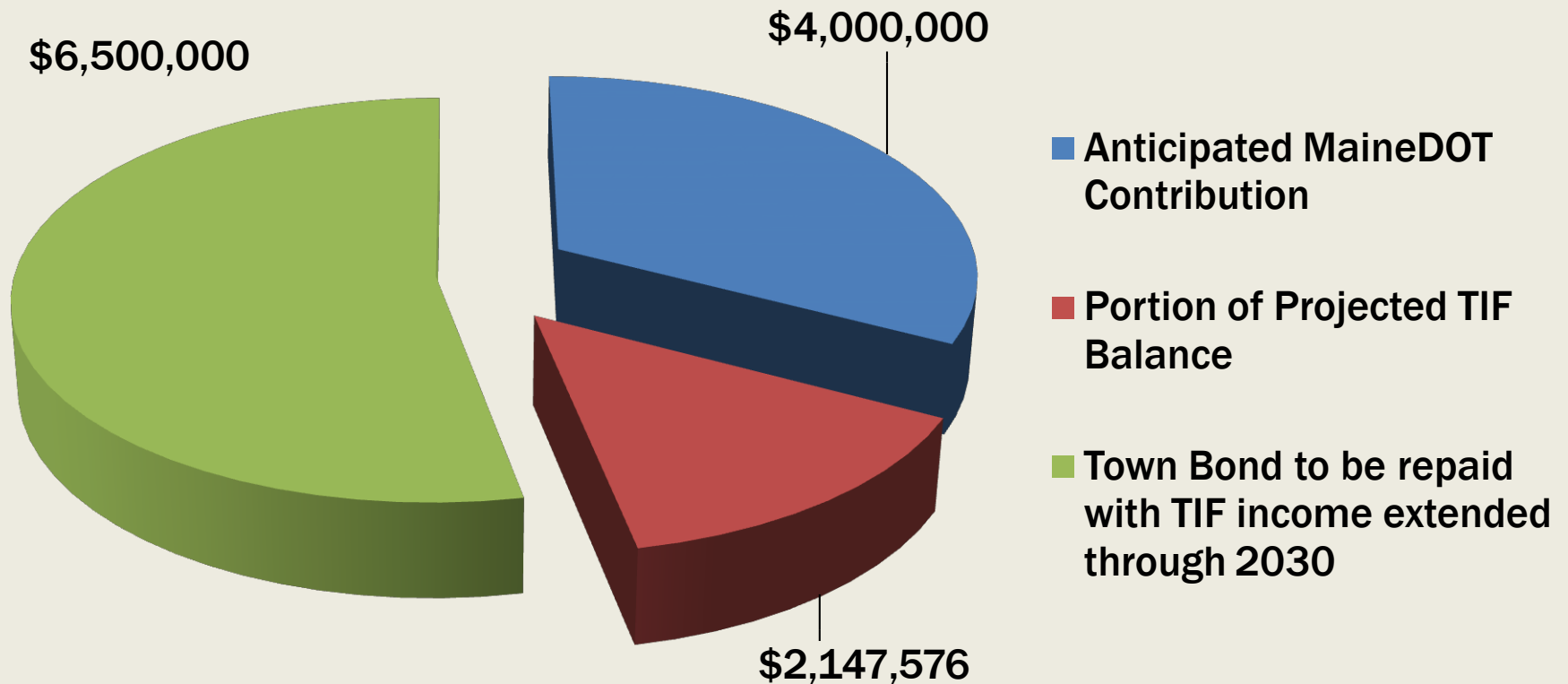
JANUARY 2016 RECOMMENDATION – ESTIMATED CONSTRUCTION COST: \$10,992,826 *



Route 100 Infrastructure Improvements
Town of Falmouth, Maine

(* total cost = \$12,647,576 including financing costs & fees)

ANTICIPATED FUNDING SOURCES



Route 100 Infrastructure Improvements
Town of Falmouth, Maine

RECOMMENDED SCOPE OF WORK



1. Fix safety of Mountain/Falmouth Road and Leighton Road Intersections
2. Rebuild Route 100 from Leighton Road to Libby Bridge
3. Add bicycle lanes from Portland line to Libby Bridge (with consistent striping to Winslow Farm)

PROPOSED CURRENT SCOPE OF WORK



4. Add continuous sidewalks -

- Route 100: From Southworth to Mountain/Falmouth Road
- Route 100: From Mill Road to Falmouth Road
- Leighton Road: From Route 100 to Brook Road
- Falmouth Road: From Route 100 to Winn Road

5. Improve street lighting with LED/Add LED pedestrian lighting

PROPOSED CURRENT SCOPE OF WORK

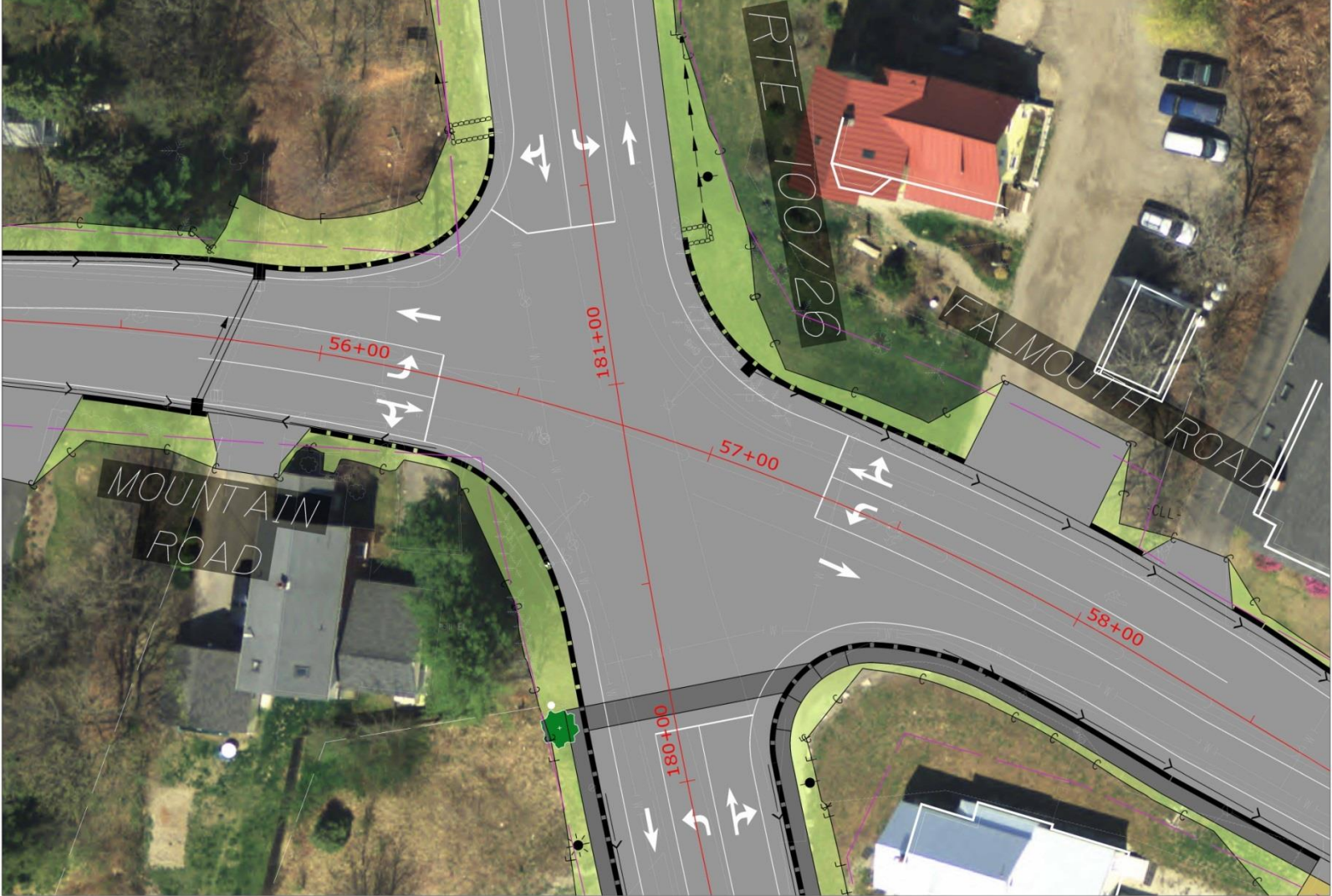


6. Add public sewer between Leighton and Mountain/Falmouth Road
7. Add new street trees/Limit tree removal where possible
8. Add median at TD Bank/Irving
9. Build Mill Road River Access Trail

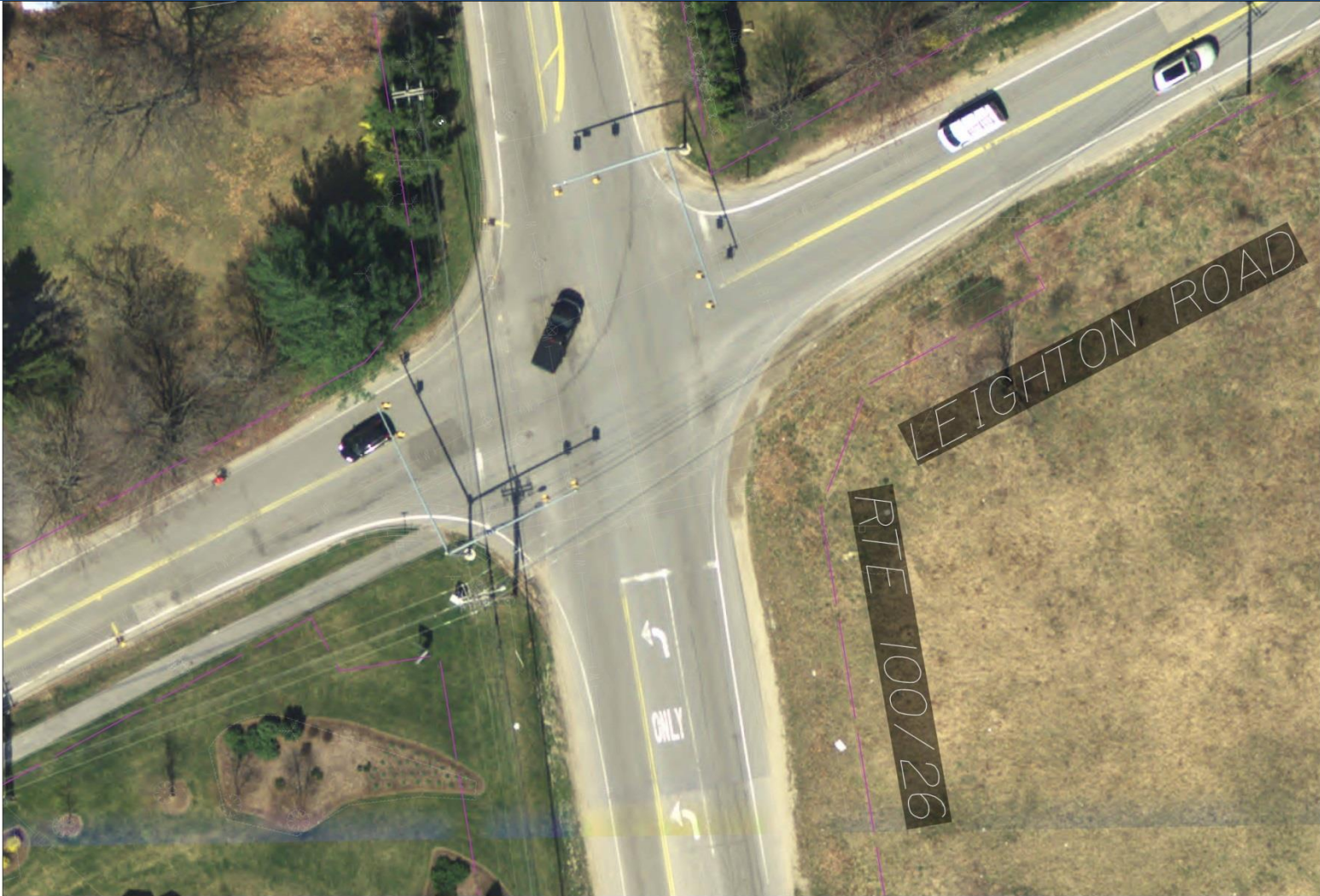
MOUNTAIN/FALMOUTH ROAD INTERSECTION



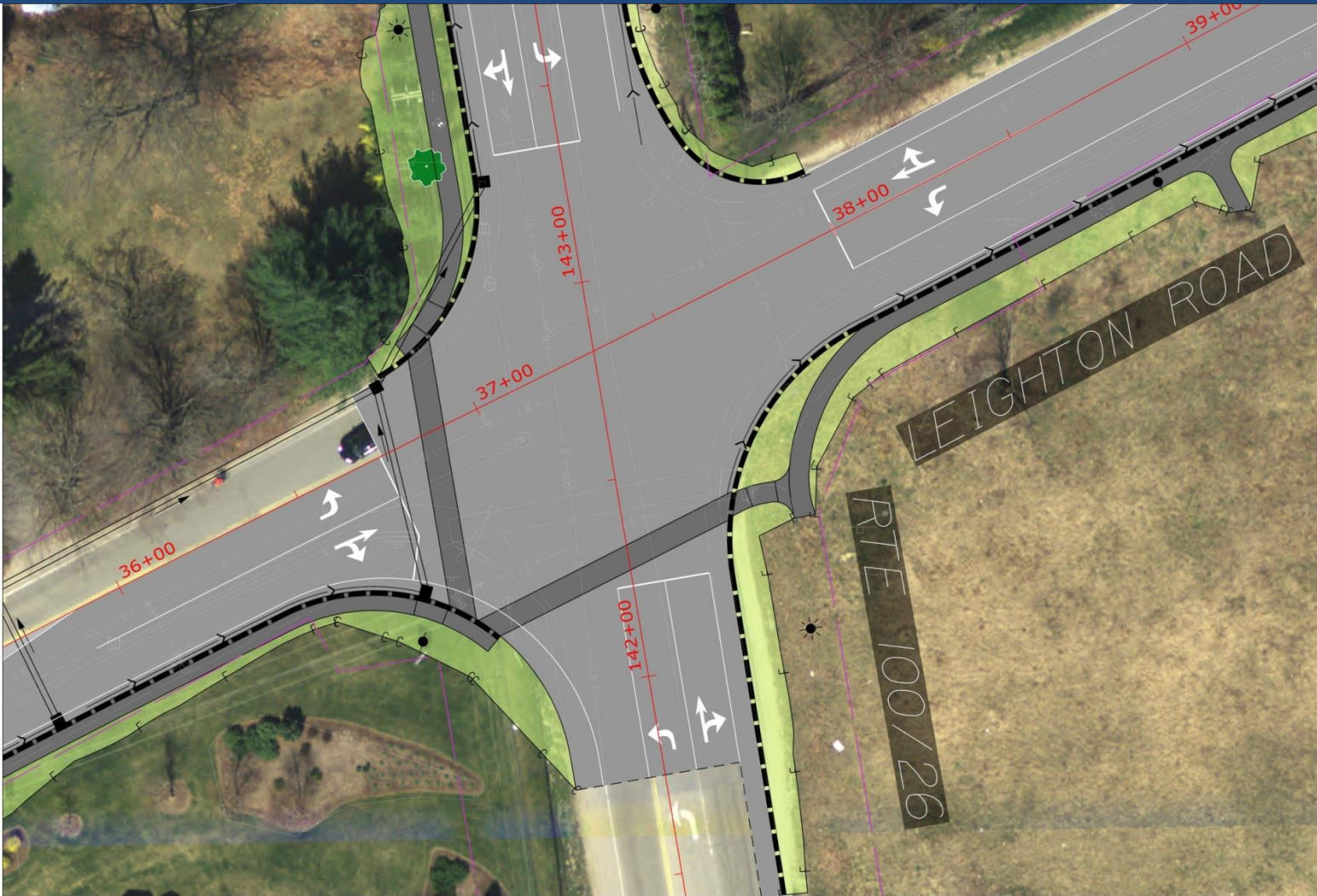
MOUNTAIN/FALMOUTH ROAD INTERSECTION



LEIGHTON ROAD INTERSECTION



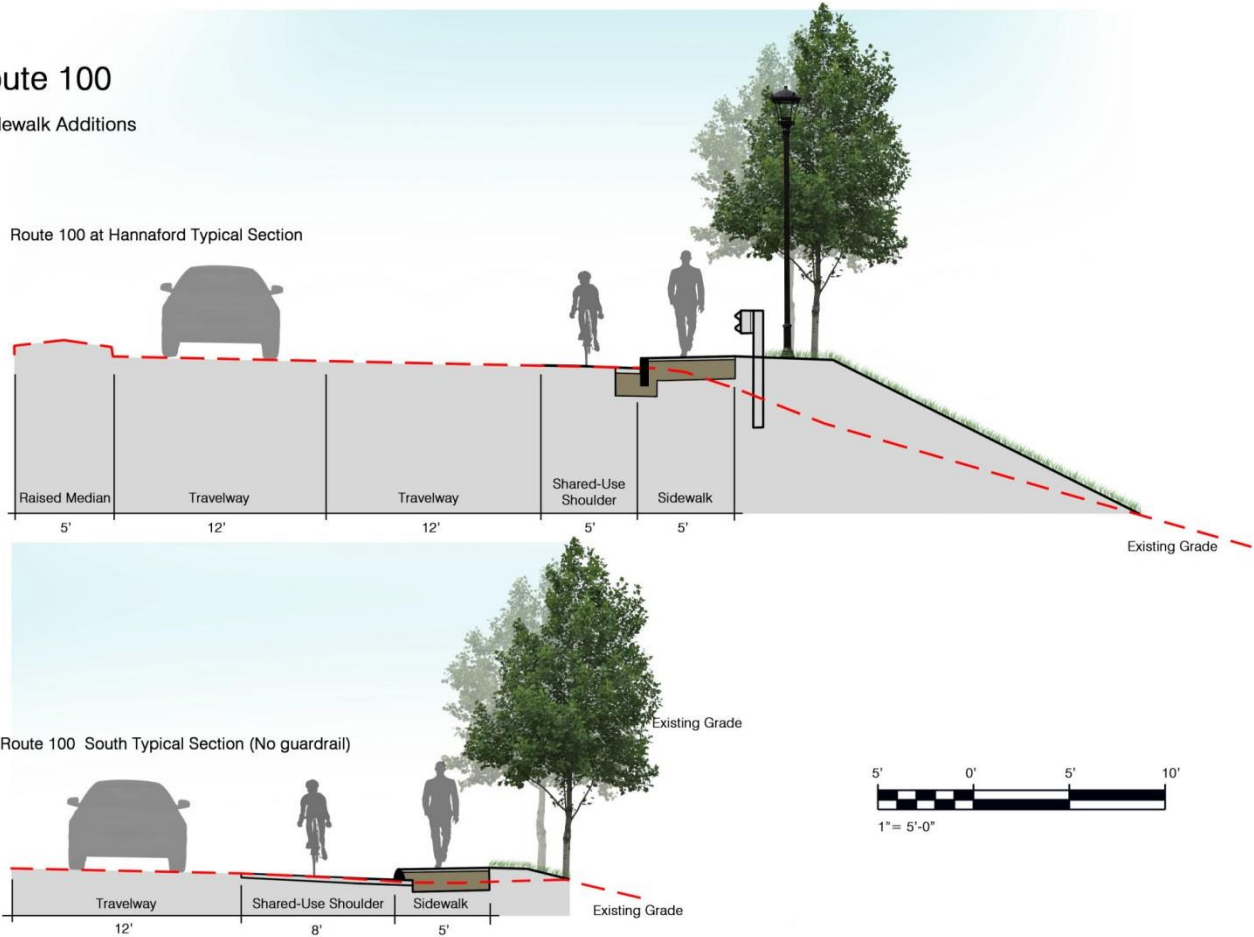
LEIGHTON ROAD INTERSECTION



NEAR HANNAFORD ROAD CROSS SECTIONS

Falmouth Route 100

Typical Sections - Sidewalk Additions



MEDIAN NEAR IRVING GAS AND TD BANK

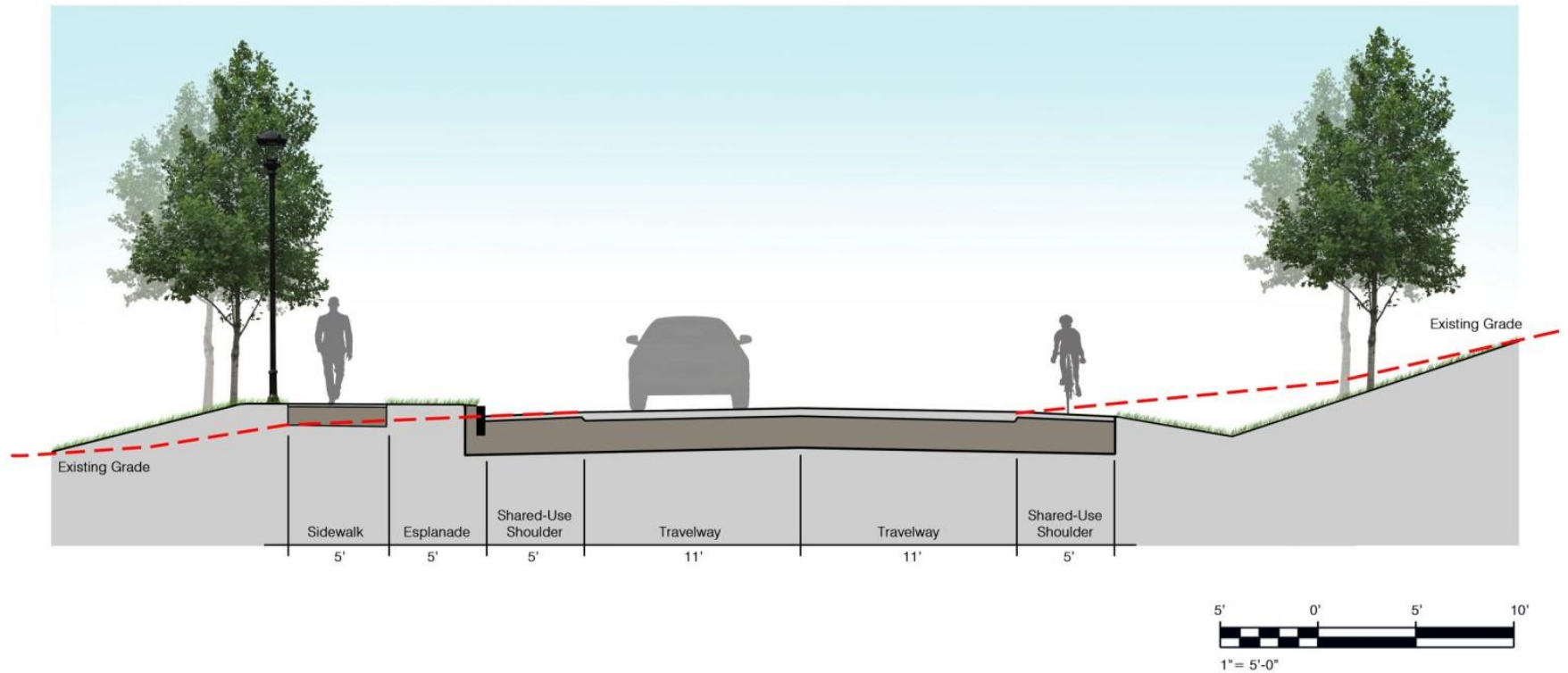


Route 100 Infrastructure Improvements
Town of Falmouth, Maine

NORTH OF LEIGHTON ROAD CROSS SECTION

Falmouth Route 100

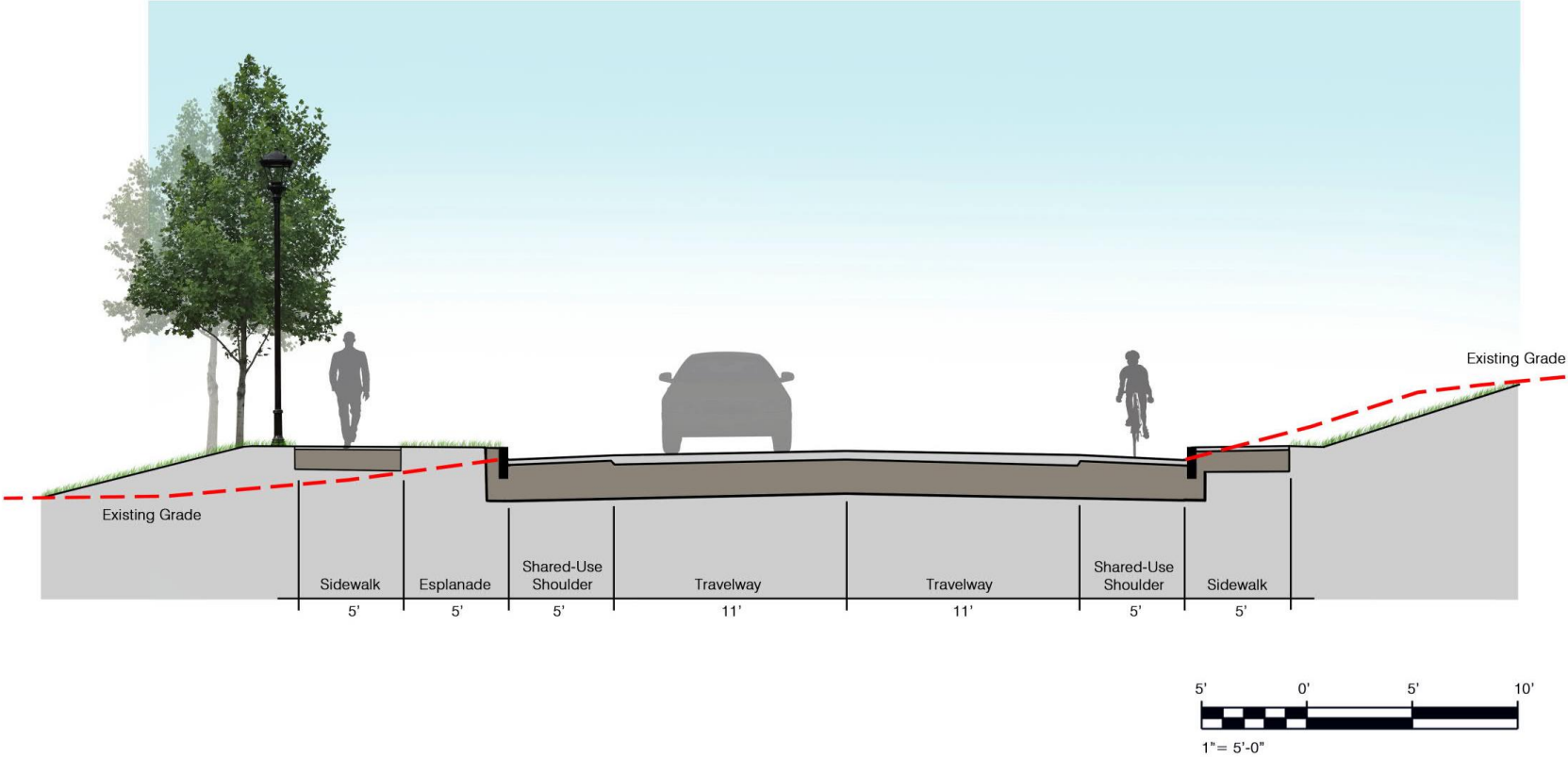
Typical Section - Leighton Road to Mill Road



NORTH OF MILL ROAD CROSS SECTION

Falmouth Route 100

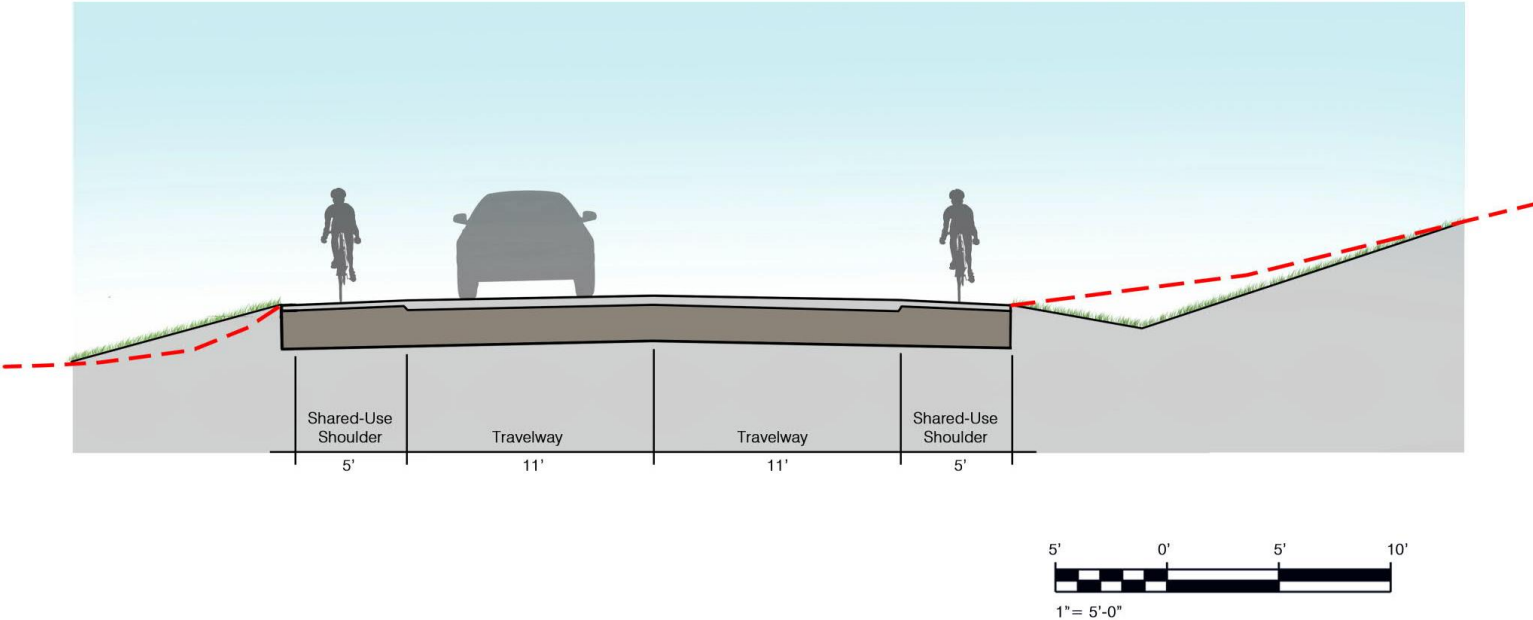
Typical Section - Mill Road to Mountain Road



NORTH OF MOUNTAIN ROAD CROSS SECTION

Falmouth Route 100

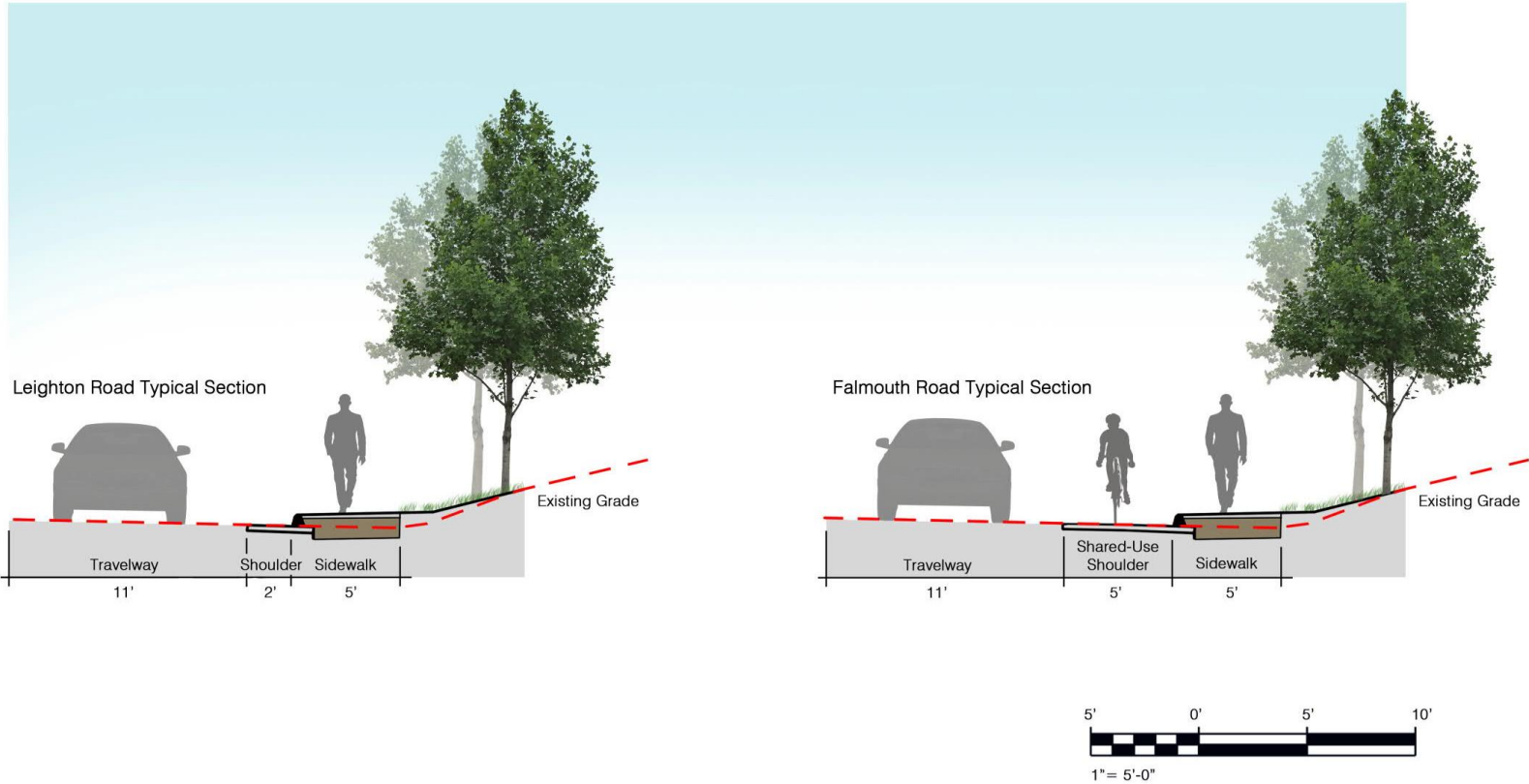
Typical Section - Mountain Road to Libby Bridge



LEIGHTON & FALMOUTH CROSS SECTIONS

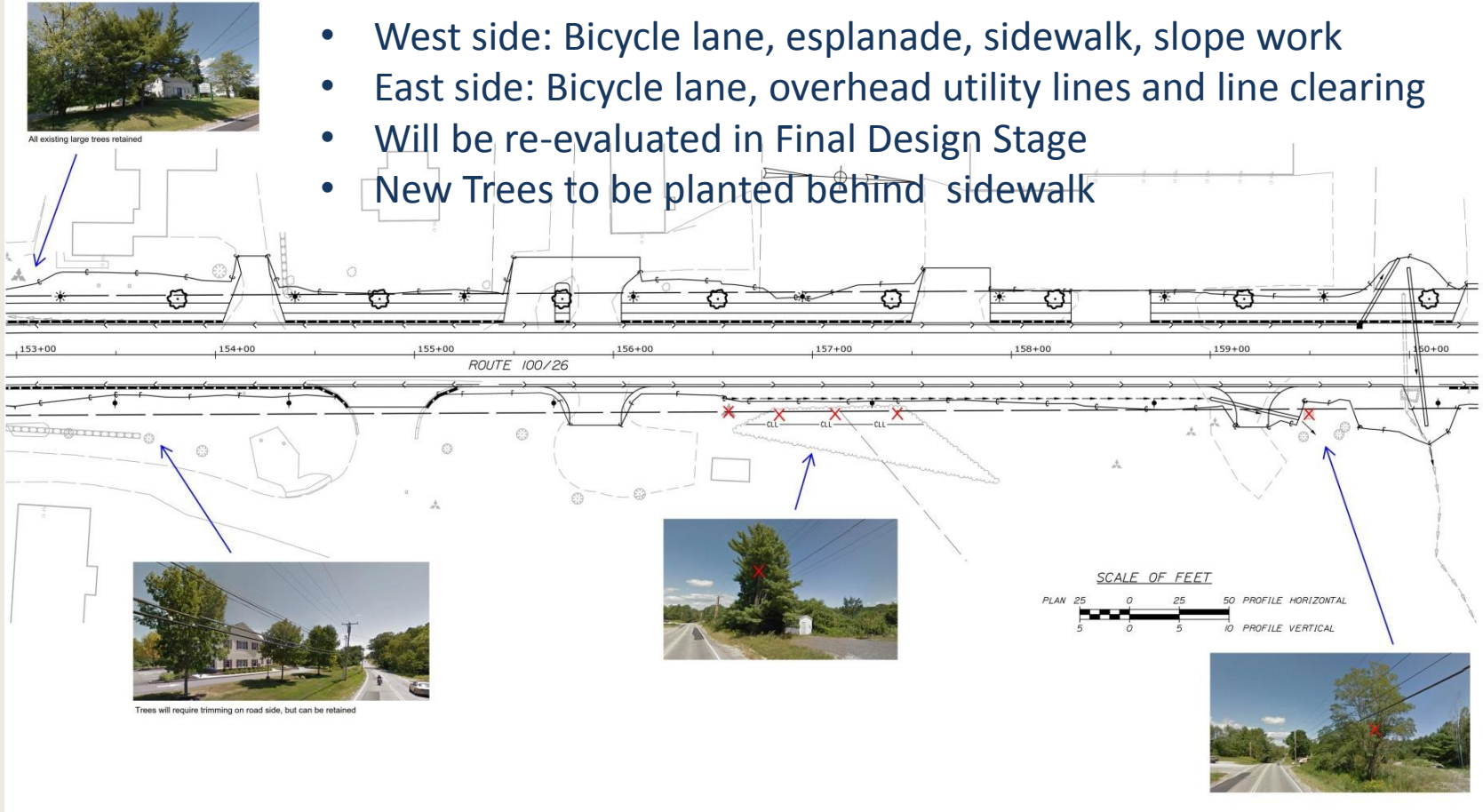
Falmouth Route 100

Typical Sections - Sidewalk Additions



REQUIRED TREE REMOVALS

- West side: Bicycle lane, esplanade, sidewalk, slope work
- East side: Bicycle lane, overhead utility lines and line clearing
- Will be re-evaluated in Final Design Stage
- New Trees to be planted behind sidewalk



NEW STREET TREES – POSSIBLE CHOICES



Young American Princeton Elm



10-15 year planted Princeton Elm



Princeton Elm fall color



American Elm street character

Princeton Elm - American Elm Hybrid



Young Bowhall Maple with fall color



10-15 year Celebration Maple



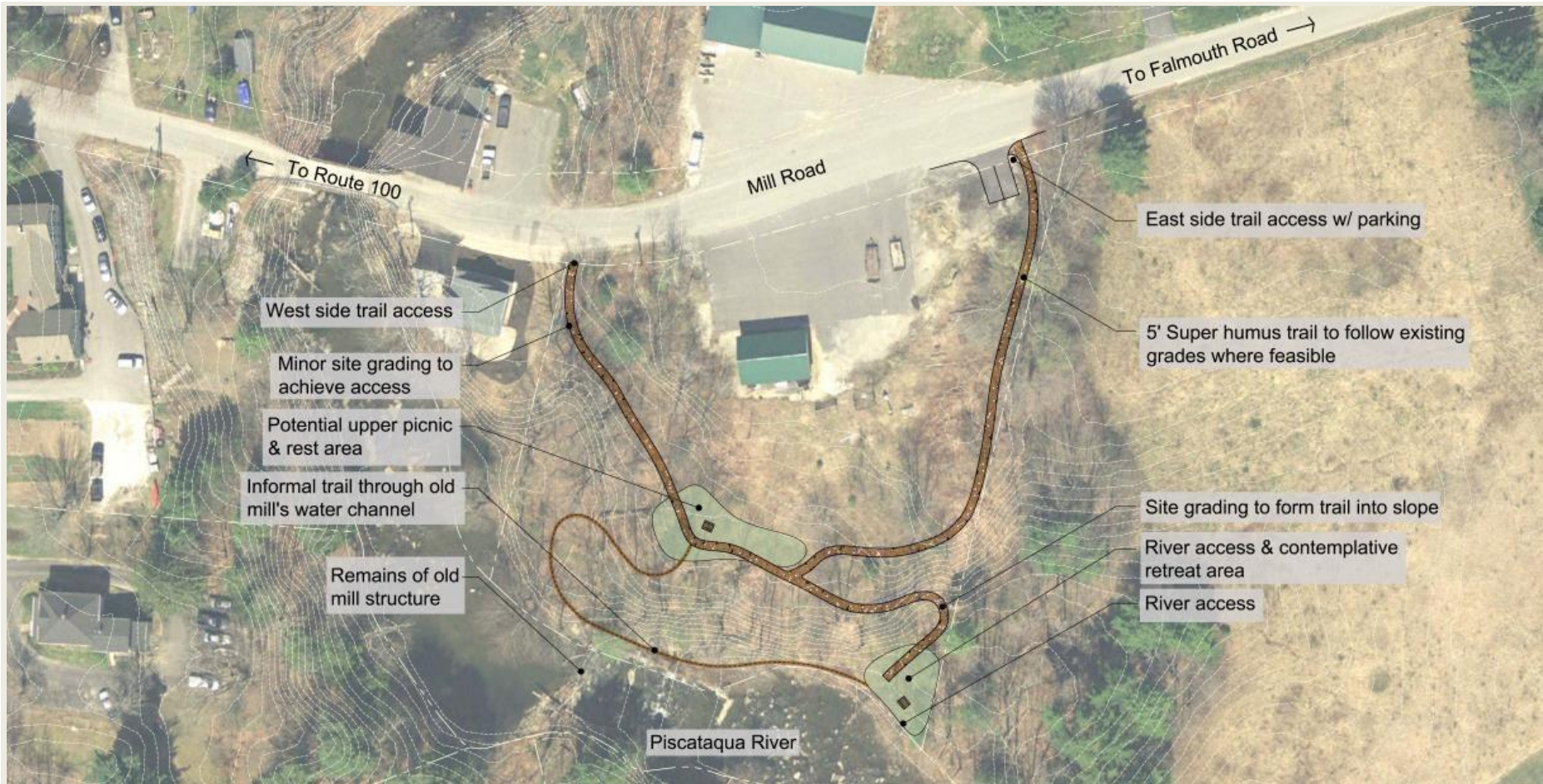
Red Sunset Red Maple fall color 10-15 year



Autumn Blaze Maple

Acer Rubrum - Red Maple and Red Maple Hybrids

MILL ROAD RIVER ACCESS TRAIL



ANTICIPATED PROJECT SCHEDULE – ASSUMING TOWN AND DECD APPROVAL

- **Jan-April 2016**
 - **Town Council review of recommendations**
 - **Finalize funding plan**
 - **Seek West Falmouth Crossing TIF extension from Maine DECD – Public Hearing**
 - **Town Council approval of wording of referendum question – Public Hearing**

- **June 2016**
 - **Voter referendum**

ANTICIPATED PROJECT SCHEDULE – ASSUMING VOTER APPROVAL

- **Summer 2016 – Summer 2017**
 - **Construction documents and final cost estimates**
 - **Town Council review and approval**
 - **Completion of Right of Way Work by MaineDOT**

- **Late Summer 2017**
 - **Construction bidding**

ANTICIPATED PROJECT SCHEDULE – ASSUMING FAVORABLE BIDS

- **Fall 2017 – Fall 2018**
 - **Construction**
- **2018**
 - **Begin discussion with MaineDOT to develop funding/design plan for Winslow Farm to Hurricane Road section of Route 100**

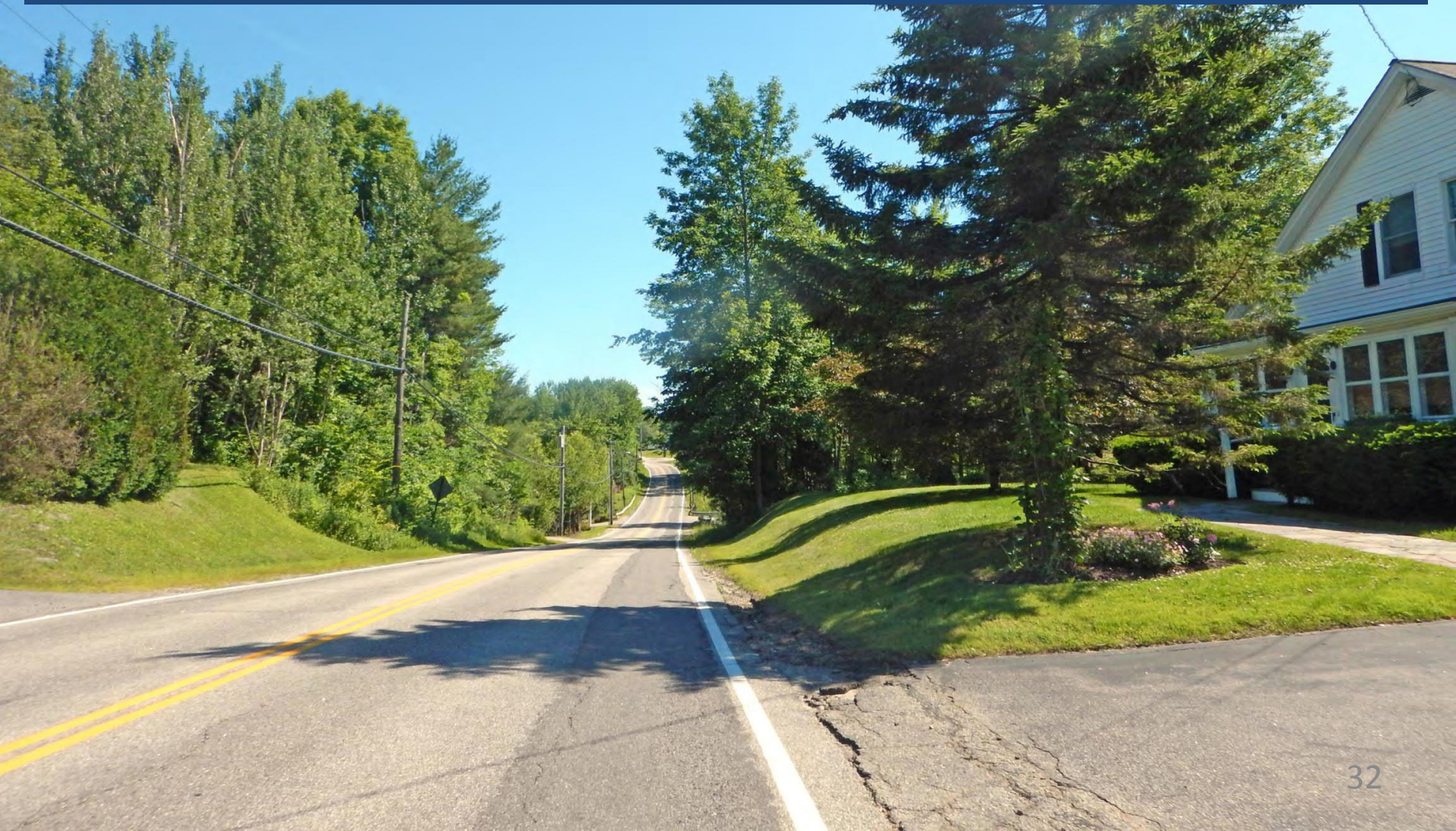
MARSTON STREET LOOKING SOUTH BEFORE VIEW



MARSTON STREET LOOKING SOUTH AFTER VIEW

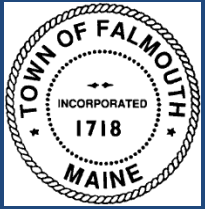


SOUTH OF MILL ROAD, LOOKING SOUTH BEFORE VIEW



SOUTH OF MILL ROAD, LOOKING SOUTH AFTER VIEW





Thank you



Route 100 Infrastructure Improvements
Town of Falmouth, Maine