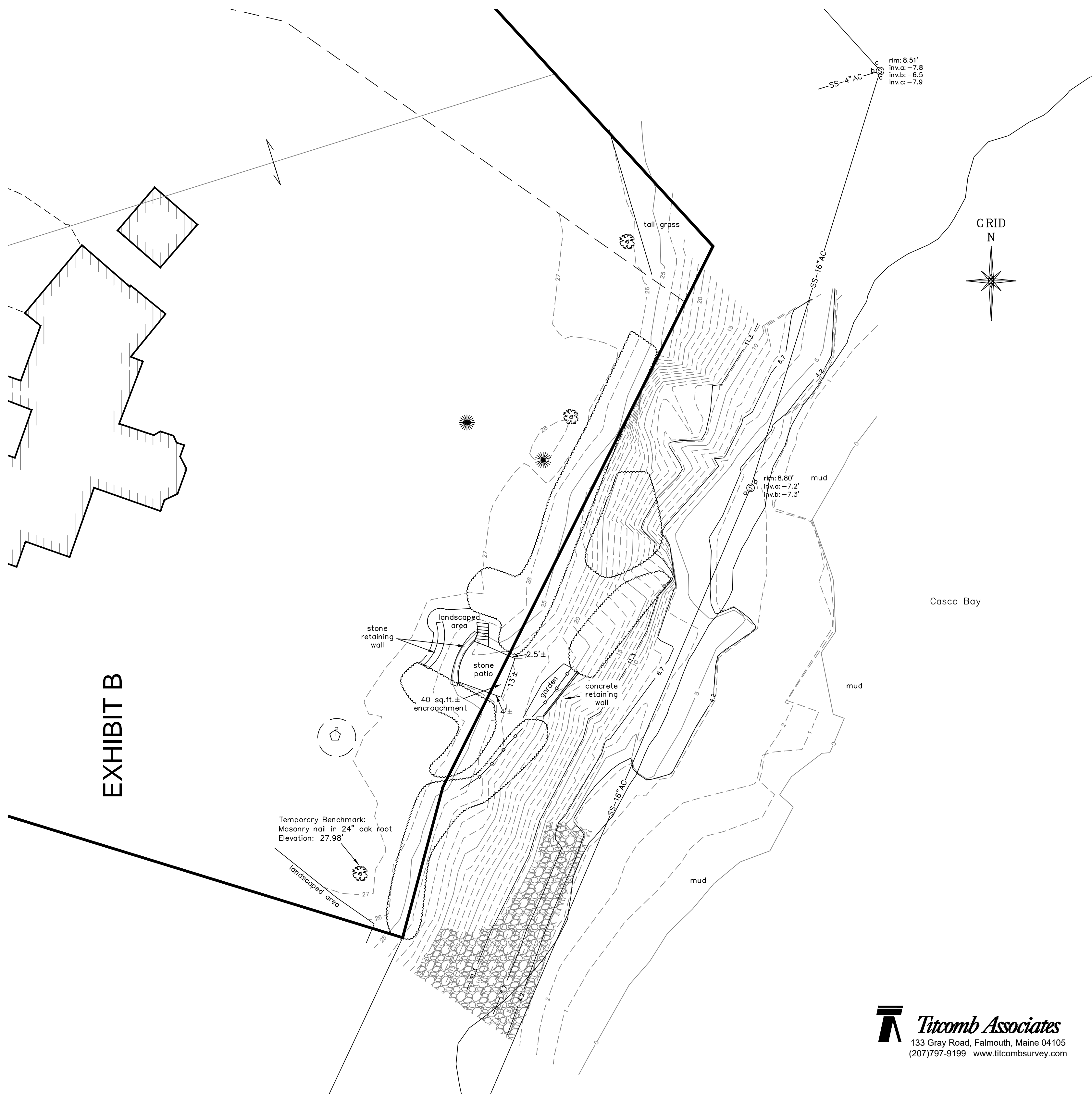


EXHIBIT B



NOTES

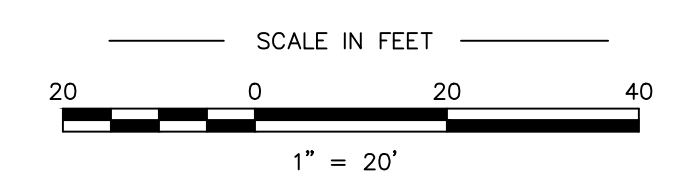
- 1) THIS IS NOT A BOUNDARY SURVEY. Boundary lines shown on this plan rely entirely on plan reference 1.
- 2) North is referenced to Grid North, Maine State Plane Coordinate System, West Zone, NAD83.
- 3) Elevations are based on NAVD88 datum.
- 4) Utility information on this plan is approximate, based on location of visible features and information contained on plan reference 2. DigSafe and/or the appropriate utilities should be contacted prior to any construction.
- 5) Portions of the property lay within Zone A2 and Zone V2 based on FIRM Community #230045 Panel #9B, dated October 16, 1984. The base flood elevation of 12 feet for both A2 and V2 zones based on NGVD29 datum has been plotted at 11.3 feet based on NAVD88 datum (converted using VDatum, provided by NOAA).
- 6) Elevations for Mean High Water and Highest Astronomical Tide are relative to Tide Station 8418150 at Ocean Gateway terminal in Portland (provided by NOAA Tides & Currents).

PLAN REFERENCES

- 1) Sketch of Property made for David Banks by Titcomb Associates dated August 14, 2017.
- 2) Plan of Mackworth PT. Interceptor made for the Town of Falmouth by Edward C. Jordan Co., Inc. dated January 1969.

LEGEND

	Property line (locus) note 1
	Property line (abutter) note 1
	Right of way line
	Post and rail fence
	Edge of pavement
	Edge of gravel
	Flagpole
	Sewer manhole
	Sewer line
	Hedge line
	Deciduous tree
	Coniferous tree
	Existing building
	Rip Rap
	Contours (1ft)
	Contours (5ft)
	Contour (4.2ft) Mean High Water (see note 6)
	Contour (6.7ft) Highest Astronomical Tide (see note 6)
	Contour (11.3ft) FEMA Base Flood Elevation (see note 5)



PLAN OF		
Existing Conditions		
18 Carroll Street	Falmouth, Maine	
MADE FOR		
Atlantic Environmental		
135 River Road	Woolwich, Maine	
JOB # 217072.1	DATE: August 2, 2019	SCALE: 1" = 20'
Rev.1	01/21/20	dimension approximate patio encroachment
		det

Titcomb Associates
 133 Gray Road, Falmouth, Maine 04105
 (207)797-9199 www.titcombsurvey.com