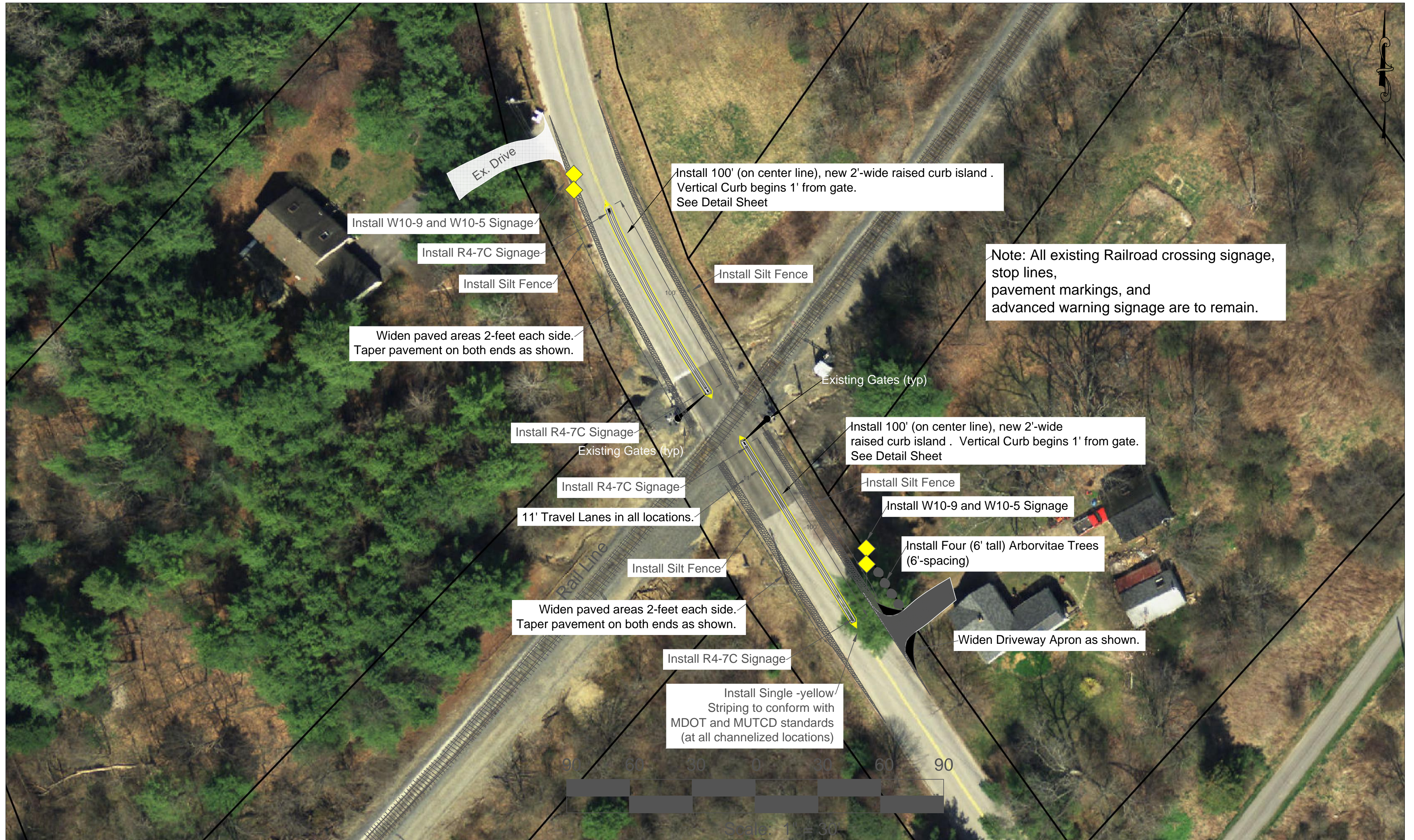


Town of Falmouth - Field Road Railroad Crossing Upgrades



Install W10-9 and W10-5 Signage

Install R4-7C Signage

Install Silt Fence

Widen paved areas 2-feet each side.
Taper pavement on both ends as shown.

Install 100' (on center line), new 2'-wide raised curb island .
Vertical Curb begins 1' from gate.
See Detail Sheet

Install Silt Fence

Note: All existing Railroad crossing signage,
stop lines,
pavement markings, and
advanced warning signage are to remain.

Install R4-7C Signage

Existing Gates (typ)

Install 100' (on center line), new 2'-wide
raised curb island . Vertical Curb begins 1' from gate.
See Detail Sheet

Install Silt Fence

11' Travel Lanes in all locations.

Install R4-7C Signage

Install W10-9 and W10-5 Signage

Install Four (6' tall) Arborvitae Trees
(6'-spacing)

Widen paved areas 2-feet each side.
Taper pavement on both ends as shown.

Install Silt Fence

Widen Driveway Apron as shown.

Install R4-7C Signage

Install Single -yellow/
Striping to conform with
MDOT and MUTCD standards
(at all channelized locations)



Scale: 1" = 30'