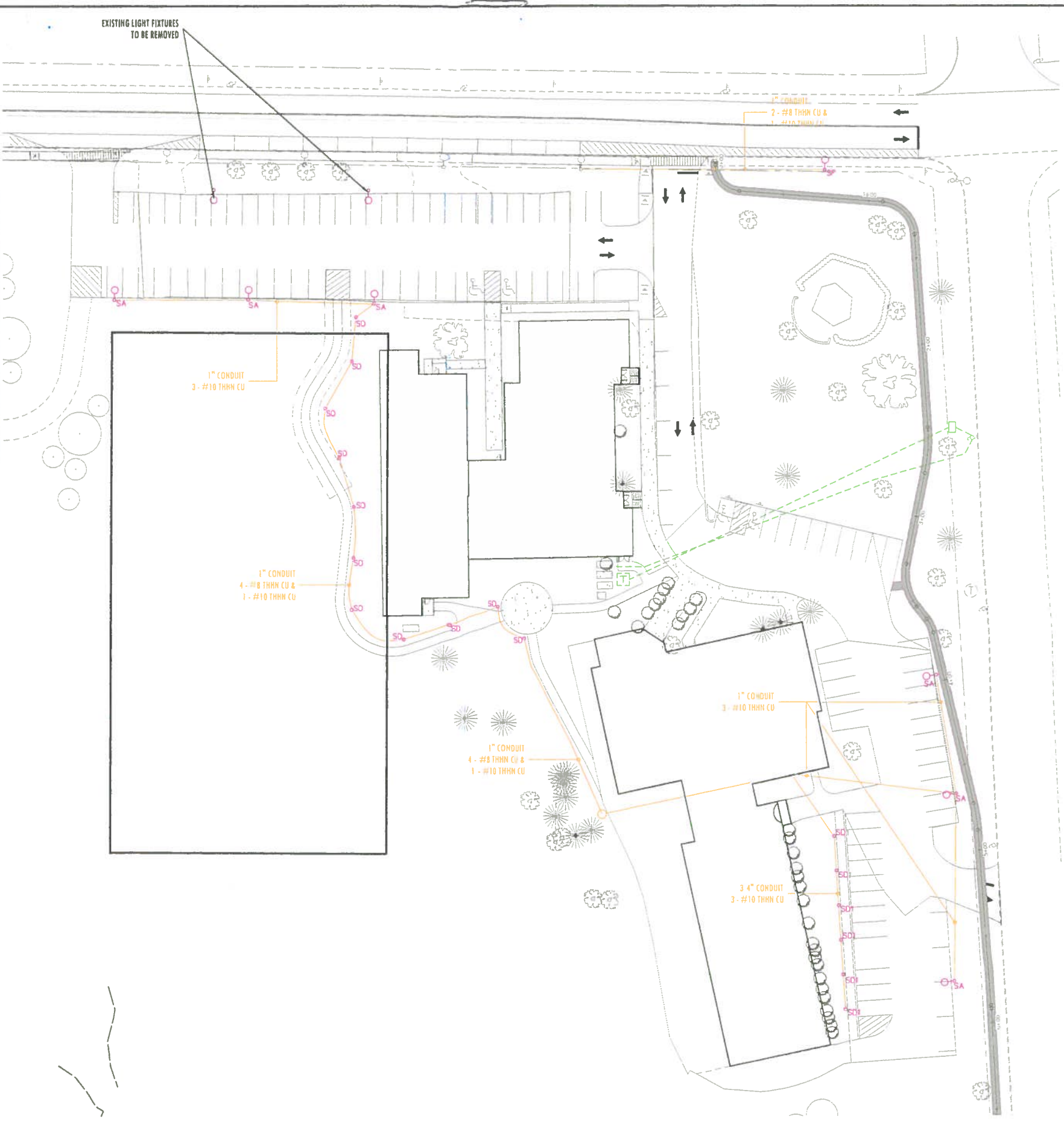


EXISTING LIGHT FIXTURES
TO BE REMOVED



SITE FIXTURE SCHEDULE

QUANTITY	TYPE	MANUFACTURER	CATALOG NUMBER	DESCRIPTION	LAMPS
6	SA	BEACON	CAP-26/36NB-80/4K/T4/UNV/NRNW/BBT	PARKING AREA LED FIXTURE	LED
6			AA-41/S/4/B/P/BBT	DECORATIVE POLE MOUNT ARM	
6			DOMU/4/BB/S/O4/S/14/4M/OT/BB	14' ROUND POLE	
-	SB	BEACON	CAP-26/36NB-80/4K/T3/UNV/NRNW/BB	PARKING AREA LED	LED
-			AA-41/S/4/B/P/BBT	DECORATIVE POLE MOUNT ARM	
-			DOMU/4/BB/S/O4/S/14/4M/OT/BB	14' ROUND POLE	
△	SC	BEACON	CAP-26/36NB-80/4K/T4/UNV/NRNW/BB	PARKING AREA LED	LED
-			AA-41/S/4/A/P/BBT	DECORATIVE WALL MOUNT ARM	
11	SD	LITHONIA	KBAB LED 12C 350 40K ASY MVOLT DBLXD	LED BOLLARD	LED
6	SD1	LITHONIA	KBAB LED 16C 350 40K SYM MVOLT DBLXD	LED BOLLARD	LED
-	SE	RAB	WPLED5N	LED WALLPACK	LED
1	SF	BEACON	CAP-21/24NB-27/4K/T3/UNV/PEC/NRNW/BBT	SIDEWALK LED FIXTURE	LED
			AA-41/S/4/B/P/BBT	DECORATIVE POLE MOUNT ARM	
			DOMU/4/BB/S/O4/S/10/4M/OT/BBT	10' ALUMINUM ROUND POLE	

MOUNTING HEIGHT NOTES:
 △ TYPE SE FIXTURE TO BE MOUNTED 3FT ABOVE GRADE.
 △ TYPE SC FIXTURE TO BE MOUNTED 15FT ABOVE GRADE TO BOTTOM OF FIXTURE

Anthony Mancini, Inc.
 179 SHERIDAN ST.
 PORTLAND, ME 04101
 P: (207)774-5829 F: (207)772-1686
 E: info@manelectric.com
 "We appreciate Your Business."



NO.	DATE	DESCRIPTION

PROJECT NAME & ADDRESS:
 Plummer School
 Senior Community
 Falmouth, Maine

SHEET NAME: Site
Date: 02.03.2016
Scale: 1" = 30'-0"
Checked By: G. MANCINI
Drawn By: A. JAMES

FOR CONSTRUCTION

SHEET:
 ES1