

Prepared For:
Verizon Wireless
Site Name:
Falmouth 3 ME
Site Address:
175 Falmouth Road
Falmouth, ME 04105

Prepared By:
Caron & Associates Design
Benjamin E. Caron
301 Concord Street
Haverhill, MA 01830
(978) 360-3671
ben@cadsim.com

General Information:

Balloon Test for these renderings was completed Saturday 9/24/2016

Bottom of Red 7' diameter balloon = 110' AGL

Top of proposed monopole steel shown = 110' AGL per plans provided

Photographs were taken only when the inclination was reported as near vertical by an associate on site throughout the test.

Weather conditions at the site were clear skies and fairly calm from 7am up until about 9:30am when the breezes and gusts began. It was still a viable test with some calm spells and some breezy spells until about 11 am when the winds picked up a bit more and it become more breezy than "light" for the remainder of the test.

An associate drove as many of the local roads as possible searching for the balloon with survey gear indication the direction of the proposed structure the entire time. Throughout that search, the balloon was only visible from 3 locations within a 2 mile radius of the proposed site.

For visual reference only. Actual visibility is dependent upon weather conditions, season, sunlight, and viewer location.

*Based upon Rev. 2 Dwgs by
Hudson Design dated: 8/05/2016 &
Showing a 110' tall Monopole*

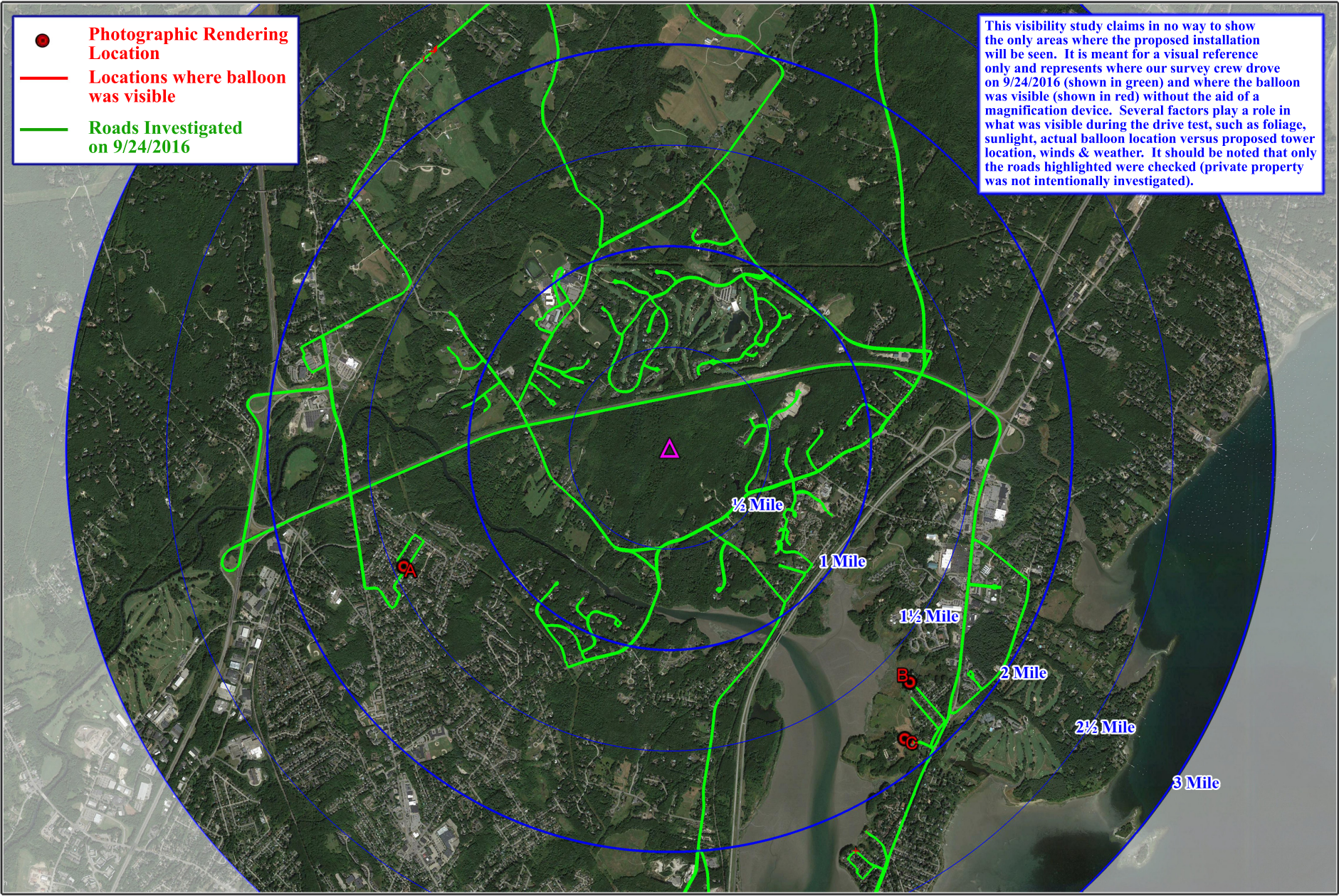
Falmouth 3 ME ~ (9/27/2016)

Photographic Renderings

Created By: Ben Caron & Mike Barreiros
 Caron & Associates Design
(978) 360-3671 info@cadsim.com

- **Photographic Rendering Location**
- **Locations where balloon was visible**
- **Roads Investigated on 9/24/2016**

This visibility study claims in no way to show the only areas where the proposed installation will be seen. It is meant for a visual reference only and represents where our survey crew drove on 9/24/2016 (shown in green) and where the balloon was visible (shown in red) without the aid of a magnification device. Several factors play a role in what was visible during the drive test, such as foliage, sunlight, actual balloon location versus proposed tower location, winds & weather. It should be noted that only the roads highlighted were checked (private property was not intentionally investigated).



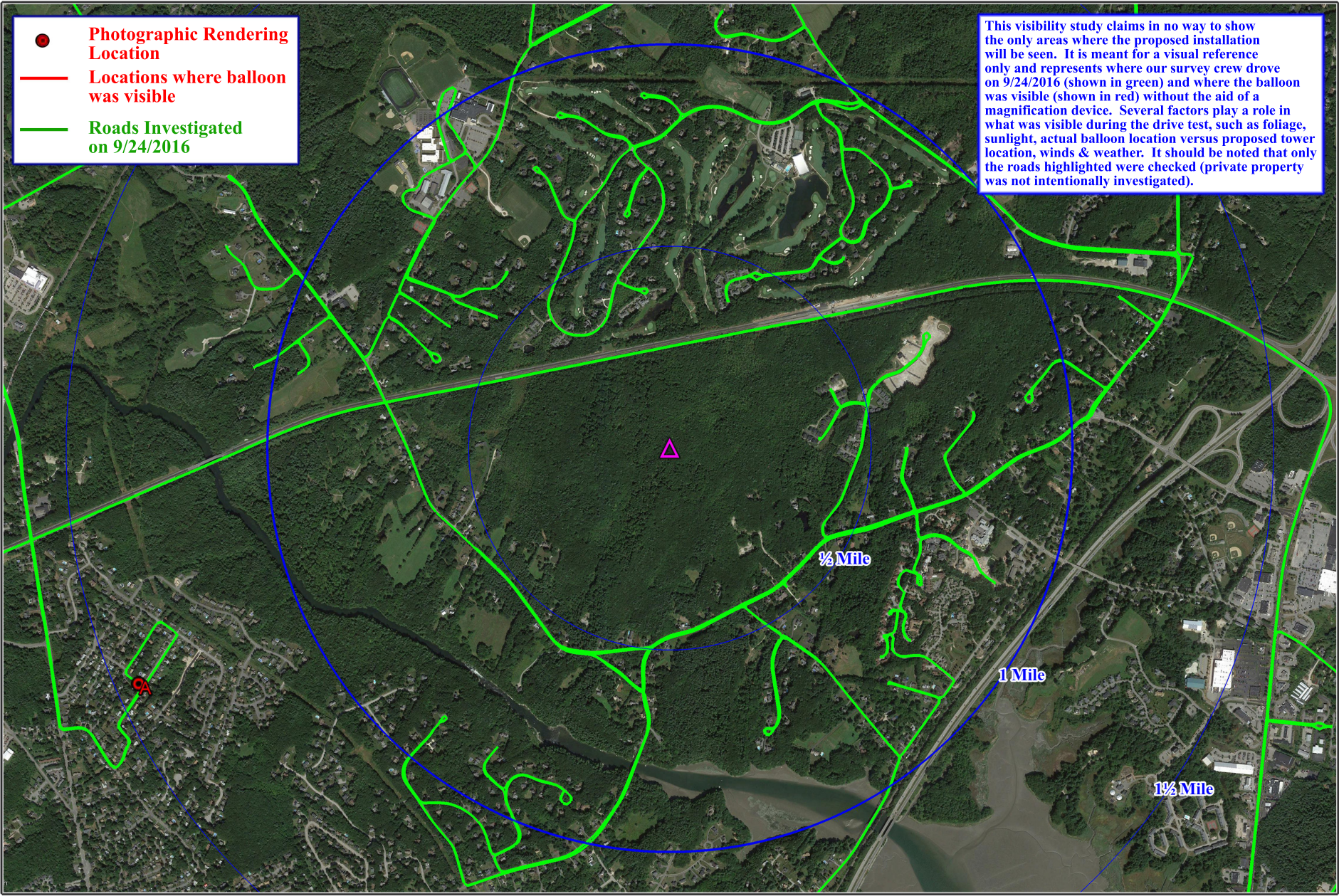
For visual reference only. Actual visibility is dependent upon weather conditions, season, sunlight, and viewer location.

Based upon Rev. 2 Dwgs by Hudson Design dated: 8/05/2016 & Showing a 110' tall Monopole

Falmouth 3 ME ~ (9/27/2016)

Driven/Verified Visibility Map
2 Mile Radius

Created By: Ben Caron & Mike Barreiros
CAD Caron & Associates Design
(978) 360-3671 info@cadsim.com



- **Photographic Rendering Location**
- **Locations where balloon was visible**
- **Roads Investigated on 9/24/2016**

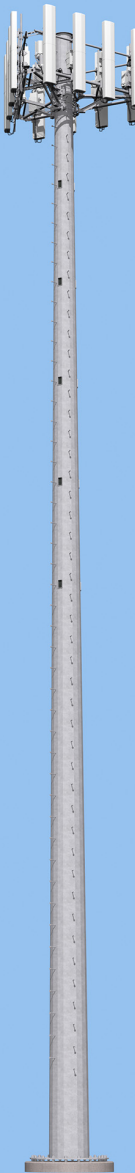
This visibility study claims in no way to show the only areas where the proposed installation will be seen. It is meant for a visual reference only and represents where our survey crew drove on 9/24/2016 (shown in green) and where the balloon was visible (shown in red) without the aid of a magnification device. Several factors play a role in what was visible during the drive test, such as foliage, sunlight, actual balloon location versus proposed tower location, winds & weather. It should be noted that only the roads highlighted were checked (private property was not intentionally investigated).

For visual reference only. Actual visibility is dependent upon weather conditions, season, sunlight, and viewer location.

Based upon Rev. 2 Dwgs by Hudson Design dated: 8/05/2016 & Showing a 110' tall Monopole

Falmouth 3 ME ~ (9/27/2016)
Driven/Verified Visibility Map
1 Mile Radius

Created By: Ben Caron & Mike Barreiros
CAD Caron & Associates Design
(978) 360-3671 info@cadsim.com




General Information:
Top of proposed monopole steel shown = 110' AGL per plans provided

For visual reference only. Actual visibility is dependent upon weather conditions, season, sunlight, and viewer location.

Based upon Rev. 2 Dwgs by Hudson Design dated: 8/05/2016 & Showing a 110' tall Monopole

Falmouth 3 ME ~ (9/27/2016)

3D Model Built for these Simulations

Created By: Ben Caron & Mike Barreiros
 Caron & Associates Design
(978) 360-3671 info@cadsim.com



Caron & Associates Design is not involved in the ordering, purchasing or design of this site specific monotree and therefore cannot be held responsible for color, exact diameter, branch placement, branch quantity, or overall quality or visual aesthetics of the Monotree to be installed. "Monopine/Monotree" towers vary greatly from manufacturer to manufacturer.

General Information:

Top of proposed monotree steel shown = 110' AGL as requested by client
Tip of Branch Crown approximately 115' AGL

For visual reference only. Actual visibility is dependent upon weather conditions, season, sunlight, and viewer location.

*Based upon Rev. 2 Dwgs by
Hudson Design dated: 8/05/2016 &
Request to show a 110' tall Monotree*

Falmouth 3 ME ~ (9/27/2016)
3D Model Built for these Simulations

Created By: Ben Caron & Mike Barreiros
 Caron & Associates Design
(978) 360-3671 info@cadsim.com



For visual reference only. Actual visibility is dependent upon weather conditions, season, sunlight, and viewer location.

*Based upon Rev. 2 Dwgs by
Hudson Design dated: 8/05/2016 &
Showing a 110' tall Monopole*

Falmouth 3 ME ~ (9/27/2016)
Photo Location A ~ 105mm ~ 7602' +/- (1.44mi) Away
From Bonny Street

Created By: Ben Caron & Mike Barreiros
CAD Caron & Associates Design
(978) 360-3671 info@cadsim.com



For visual reference only. Actual visibility is dependent upon weather conditions, season, sunlight, and viewer location.

*Based upon Rev. 2 Dwgs by
Hudson Design dated: 8/05/2016 &
Showing a 110' tall Monopole*

Falmouth 3 ME ~ (9/27/2016)
Photo Location A ~ 105mm ~ 7602' +/- (1.44mi) Away
From Bonny Street


Created By: Ben Caron & Mike Barreiros
 Caron & Associates Design
(978) 360-3671 info@cad sims.com



For visual reference only. Actual visibility is dependent upon weather conditions, season, sunlight, and viewer location.

*Based upon Rev. 2 Dwgs by
Hudson Design dated: 8/05/2016 &
Request to show a 110' tall Monotree*

Falmouth 3 ME ~ (9/27/2016)
Photo Location A ~ 105mm ~ 7602' +/- (1.44mi) Away
From Bonny Street

Created By: Ben Caron & Mike Barreiros
 Caron & Associates Design
(978) 360-3671 info@cadsim.com



For visual reference only. Actual visibility is dependent upon weather conditions, season, sunlight, and viewer location.

*Based upon Rev. 2 Dwgs by
Hudson Design dated: 8/05/2016 &
Showing a 110' tall Monopole*

Falmouth 3 ME ~ (9/27/2016)
Photo Location B ~ 105mm ~ 8781' +/- (1.66mi) Away
Near 36 Providence Avenue

Created By: Ben Caron & Mike Barreiros
CAD Caron & Associates Design
(978) 360-3671 info@cadsim.com



For visual reference only. Actual visibility is dependent upon weather conditions, season, sunlight, and viewer location.

*Based upon Rev. 2 Dwgs by
Hudson Design dated: 8/05/2016 &
Showing a 110' tall Monopole*

Falmouth 3 ME ~ (9/27/2016)
Photo Location B ~ 105mm ~ 8781' +/- (1.66mi) Away
Near 36 Providence Avenue

Created By: Ben Caron & Mike Barreiros
CAD Caron & Associates Design
(978) 360-3671 info@cadsim.com



For visual reference only. Actual visibility is dependent upon weather conditions, season, sunlight, and viewer location.

*Based upon Rev. 2 Dwgs by
Hudson Design dated: 8/05/2016 &
Request to show a 110' tall Monotree*

Falmouth 3 ME ~ (9/27/2016)
Photo Location B ~ 105mm ~ 8781' +/- (1.66mi) Away
Near 36 Providence Avenue

Created By: Ben Caron & Mike Barreiros
 Caron & Associates Design
(978) 360-3671 info@cadsim.com



For visual reference only. Actual visibility is dependent upon weather conditions, season, sunlight, and viewer location.

*Based upon Rev. 2 Dwg's by
Hudson Design dated: 8/05/2016 &
Showing a 110' tall Monopole*

Falmouth 3 ME ~ (9/27/2016)
Photo Location C ~ 105mm ~ 9778'+/- (1.85mi) Away
From Audubon Society Parking Lot

Created By: Ben Caron & Mike Barreiros
CAD Caron & Associates Design
(978) 360-3671 info@cadsim.com



For visual reference only. Actual visibility is dependent upon weather conditions, season, sunlight, and viewer location.

*Based upon Rev. 2 Dwgs by
Hudson Design dated: 8/05/2016 &
Showing a 110' tall Monopole*

Falmouth 3 ME ~ (9/27/2016)
Photo Location C ~ 105mm ~ 9778'+/- (1.85mi) Away
From Audubon Society Parking Lot


Created By: Ben Caron & Mike Barreiros
 Caron & Associates Design
(978) 360-3671 info@cadsim.com



For visual reference only. Actual visibility is dependent upon weather conditions, season, sunlight, and viewer location.

*Based upon Rev. 2 Dwgs by
Hudson Design dated: 8/05/2016 &
Request to show a 110' tall Monotree*

Falmouth 3 ME ~ (9/27/2016)
Photo Location C ~ 105mm ~ 9778'+/- (1.85mi) Away
From Audubon Society Parking Lot

Created By: Ben Caron & Mike Barreiros
 Caron & Associates Design
(978) 360-3671 info@cadsim.com