

# Falmouth, Maine ZONING MAP

## Residential Rural Districts

- F Farm and Forest
- Fm Farm and Forest (Manufactured Housing)
- HL Highland Lake Residential

## Residential Growth Districts

- RA Residential A
- RAm Residential A (Manufactured Housing)
- RB Residential B
- RBm Residential B (Manufactured Housing)

RC Residential C

RD Residential D

OSRD Open Space Residential

## Special Districts

- WFCMPD West Falmouth Crossing Master Planned Dev
- TMPD Tidewater Master Planned Dev
- VP Village Park
- HT Hat Trick Drive
- MRSD Middle Road

GR Gray Road

## Commercial/Mixed Use Growth Districts

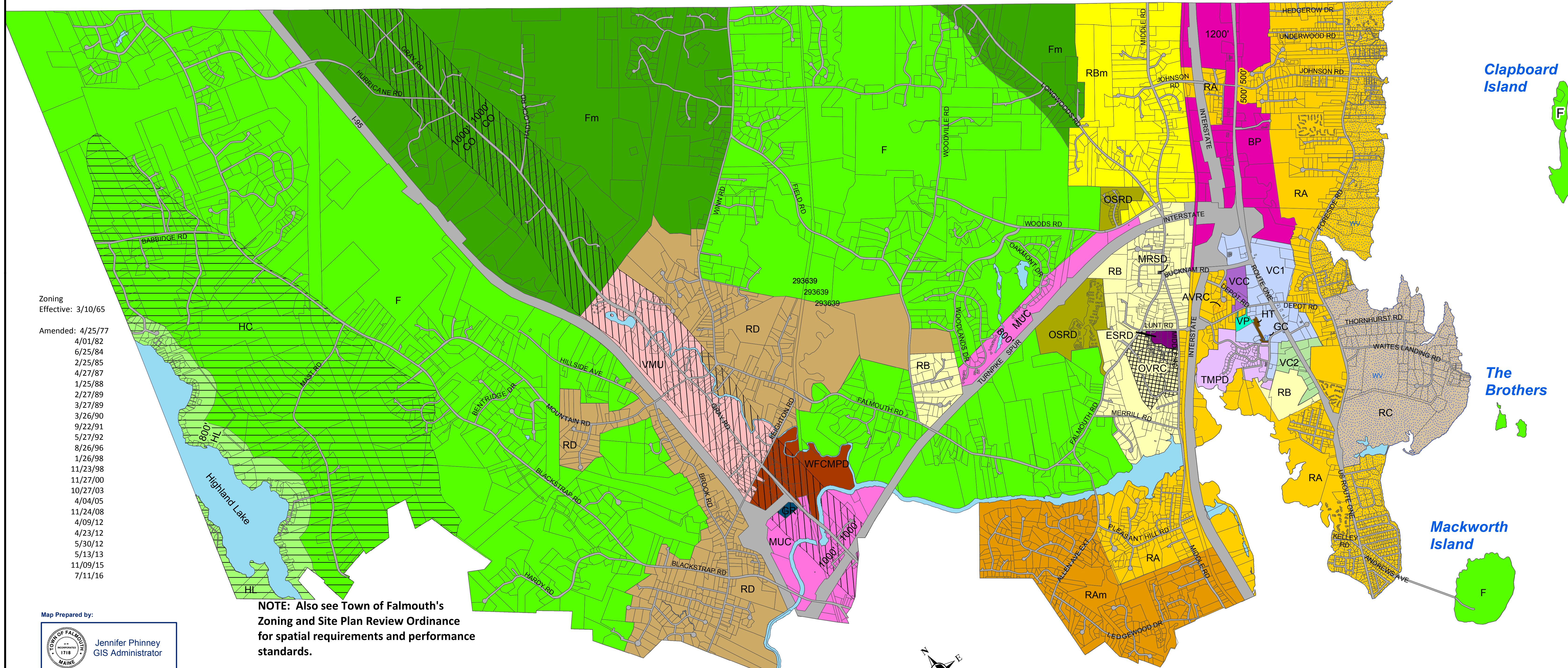
- VC1 Village Center 1
- VC2 Village Center 2
- VCC Village Center Civic
- MUC Mixed Use Cluster
- VMU Village Mixed Use
- ESRD Elementary School Redevelopment
- BP Business and Professional

## Overlay Districts

- CO Route 100 Corridor (1,000 ft from Rte 100)
- HC Highland Lake Conservation (HC)
- WV Water View
- GC Garden Center

## Retirement Community Overlay Districts

- AVRC Avesta
- OCRC OceanView



Zoning Effective: 3/10/65

Amended: 4/25/77

- 4/01/82
- 6/25/84
- 2/25/85
- 4/27/87
- 1/25/88
- 2/27/89
- 3/27/89
- 3/26/90
- 9/22/91
- 5/27/92
- 8/26/96
- 1/26/98
- 11/23/98
- 11/27/00
- 10/27/03
- 4/04/05
- 11/24/08
- 4/09/12
- 4/23/12
- 5/30/12
- 5/13/13
- 11/09/15
- 7/11/16

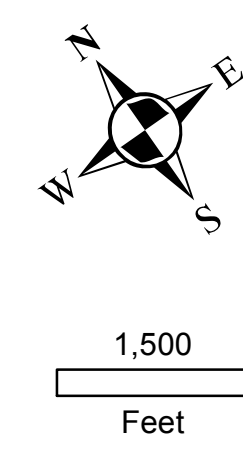
**NOTE:** Also see Town of Falmouth's Zoning and Site Plan Review Ordinance for spatial requirements and performance standards.

See Official Falmouth Shoreland Zoning Map of 2009 for Shoreland Zoning delineation and districts.

Resource Conservation Zoning Overlay District include the following districts: RA, RB, RC, RD, FF, and HL.

Map Prepared by:

Jennifer Phinney  
GIS Administrator



I CERTIFY THIS TO BE A TRUE COPY OF THE OFFICIAL ZONING MAP AS AMENDED BY VOTE OF THE TOWN COUNCIL.

TOWN CLERK