

ADDENDUM NUMBER 1:
Route 1 South Utility Project
January 18, 2018

This Addendum forms part of the original document marked: **Route 1 South Utility Project.**

This document, as well as the new sheets will be emailed to the listed plan holders.

1). **REPLACE BID SCHEDULE (attached):**

The bid tab has been revised to revise quantities for the following items:

- 670.177 24"x 24"x18" Handhole
- 670.197 2-1/2" PVC Schedule 40 Conduit
- 670.316 #250 KCMIL Copper Wire
- 670.317 #3/0 AWG Copper Wire
- 670.319 #2 AWG Copper Wire
- 670.320 #4 AWG Copper Wire
- 680.100 5" PVC Schedule 40 Ductbank - 2 Ducts
- 681.177 UGT 24"x24"x18" Handhole
- 681.196 UGT 2" PVC Schedule 40 Conduit
- 682.177 CCTV 24"x24"x18" Handhole
- 682.196 CCTV 2" PVC Schedule 40 Conduit
- 683.196 Comm. 2" PVC Schedule 40 Conduit

Replace the bid tab in the contract documents in its entirety, with the attached.

5). **ADD SHEETS 6A and 6B OF 6 (attached):**

Detail sheets 6A and 6B have been added to the set to include the following details:

- Pavement Restoration Section – Driveways and Non-Roadway Areas
- Pavement Sawcut Detail
- Single Phase Transformer Pad
- Utility Trench – Secondary Electric, Tel. & Comm.
- 4'x6' Splice box with 32" Round Cover
- Electric Duct Bank Details
- Duct Bank Details – Telephone, Cable TV, Communications, ETC.
- 24"x24"x18" Hand Hole Details

All else remains unchanged from original bid document.

Please acknowledge receipt of this addendum within your proposal. Failure to do so may subject a bidder to disqualification.

ATTACHMENTS

1. Revised Bid Form Pages D-7 and D-8
2. New Detail Sheets 6A,6B,

End of Addendum #1

BASE BID FORM
SCHEDULE OF PRICES

Note: This proposal shall be filled in by the Bidders, with the Unit Prices written in words and numerals and the extensions shall be made by him.
For complete information concerning these items, see the Specifications.

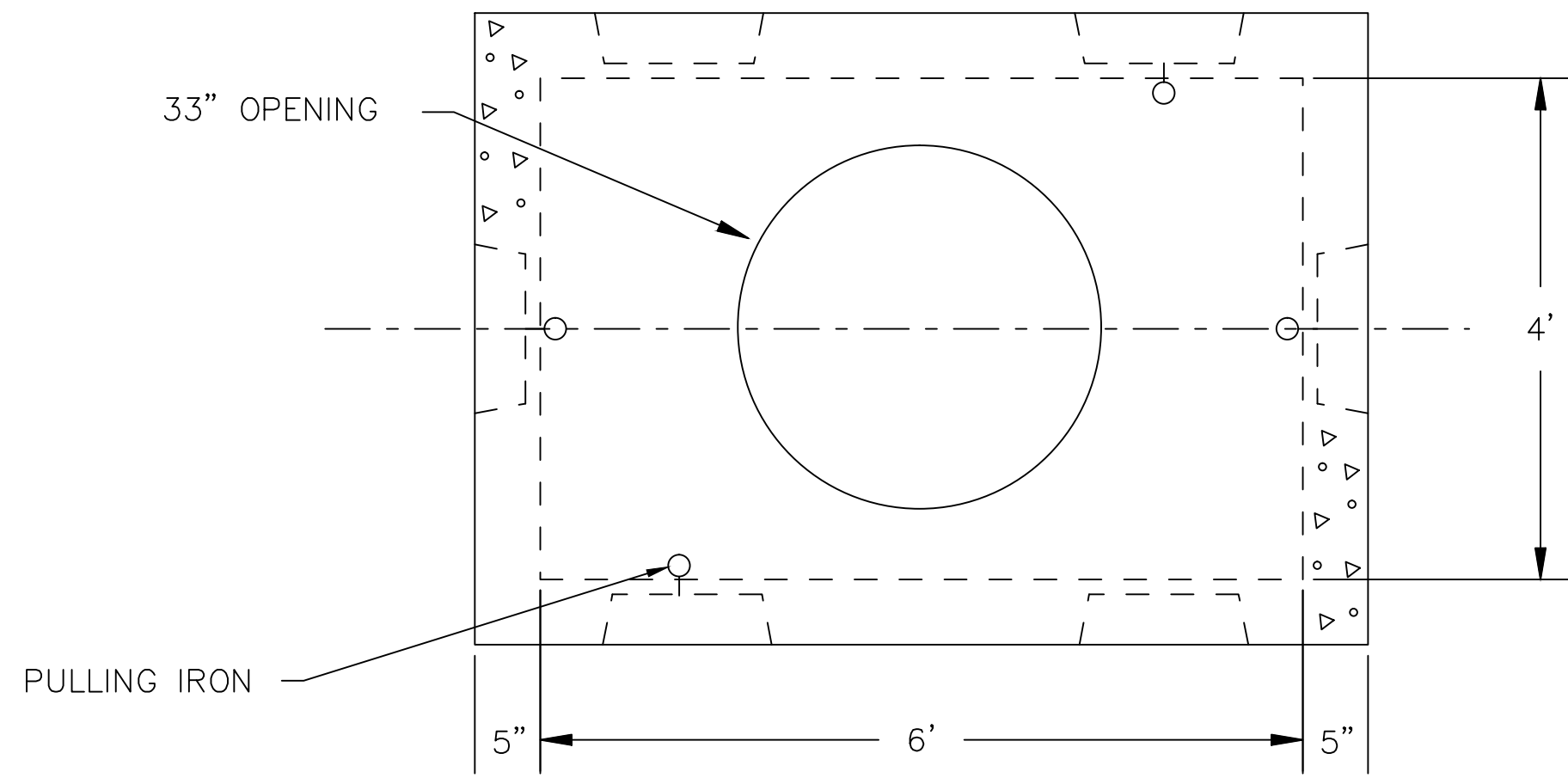
Item No.	Quantity	Description and Unit Price	Unit	Amount	Quantity
416.020	700	Hot Bituminous Pavement Restoration (Private Driveways, Etc.) The Unit Price of \$ _____ Per Square Yard	S.Y.		700
622.100	1	Transplanting Shrub The Unit Price of \$ _____ Per Each	Each		1
670.156	10	2-1/2" Riser Drop The Unit Price of \$ _____ Per Each	Each		10
670.177	3	24"x24"x18" Handhole The Unit Price of \$ _____ Per Each	Each		3
670.197	2280	2-1/2" PVC Schedule 40 Conduit The Unit Price of \$ _____ Per Linear Foot	L.F.		2280
670.316	2655	#250 KCMIL Copper Wire The Unit Price of \$ _____ Per Linear Foot	L.F.		2655
670.317	60	#3/0 AWG Copper Wire The Unit Price of \$ _____ Per Linear Foot	L.F.		60
670.318	828	#2/0 AWG Copper Wire The Unit Price of \$ _____ Per Linear Foot	L.F.		828
670.319	801	#2 AWG Copper Wire The Unit Price of \$ _____ Per Linear Foot	L.F.		801
670.320	495	#4 AWG Copper Wire The Unit Price of \$ _____ Per Linear Foot	L.F.		495
670.802	1	200A Meter Socket The Unit Price of \$ _____ Per Each	Each		1
670.803	1	100A Meter Socket The Unit Price of \$ _____ Per Each	Each		1
680.100	210	5" PVC Schedule 40 Ductbank - 2 Ducts The Unit Price of \$ _____ Per Each	L.F.		210

Item No.	Quantity	Description and Unit Price	Unit	Amount	Quantity
680.140	2	4' x 6' Heavy Duty Junction Box The Unit Price of \$ _____ Per Each	Each		2
680.150	2	5" Riser Drop The Unit Price of \$ _____ Per Each	Each		2
680.160	1	4' x 4' Single Phase Transformer Pad The Unit Price of \$ _____ Per Each	Each		1
681.156	12	UGT 2" Riser Drop The Unit Price of \$ _____ Per Each	Each		12
681.177	4	UGT 24"x24"x18" Handhole The Unit Price of \$ _____ Per Each	Each		4
681.196	2700	UGT 2" PVC Schedule 40 Conduit The Unit Price of \$ _____ Per Linear Foot	L.F.		2700
682.156	12	CCTV 2" Riser Drop The Unit Price of \$ _____ Per Each	Each		12
682.177	4	CCTV 24"x24"x18" Handhole The Unit Price of \$ _____ Per Each	Each		4
682.196	2700	CCTV 2" PVC Schedule 40 Conduit The Unit Price of \$ _____ Per Linear Foot	L.F.		2700
683.156	6	Comm. 2" Riser Drop The Unit Price of \$ _____ Per Each	Each		6
683.177	3	Comm. 24"x24"x18" Handhole The Unit Price of \$ _____ Per Each	Each		3
683.196	1511	Comm. 2" PVC Schedule 40 Conduit The Unit Price of \$ _____ Per Linear Foot	L.F.		1511

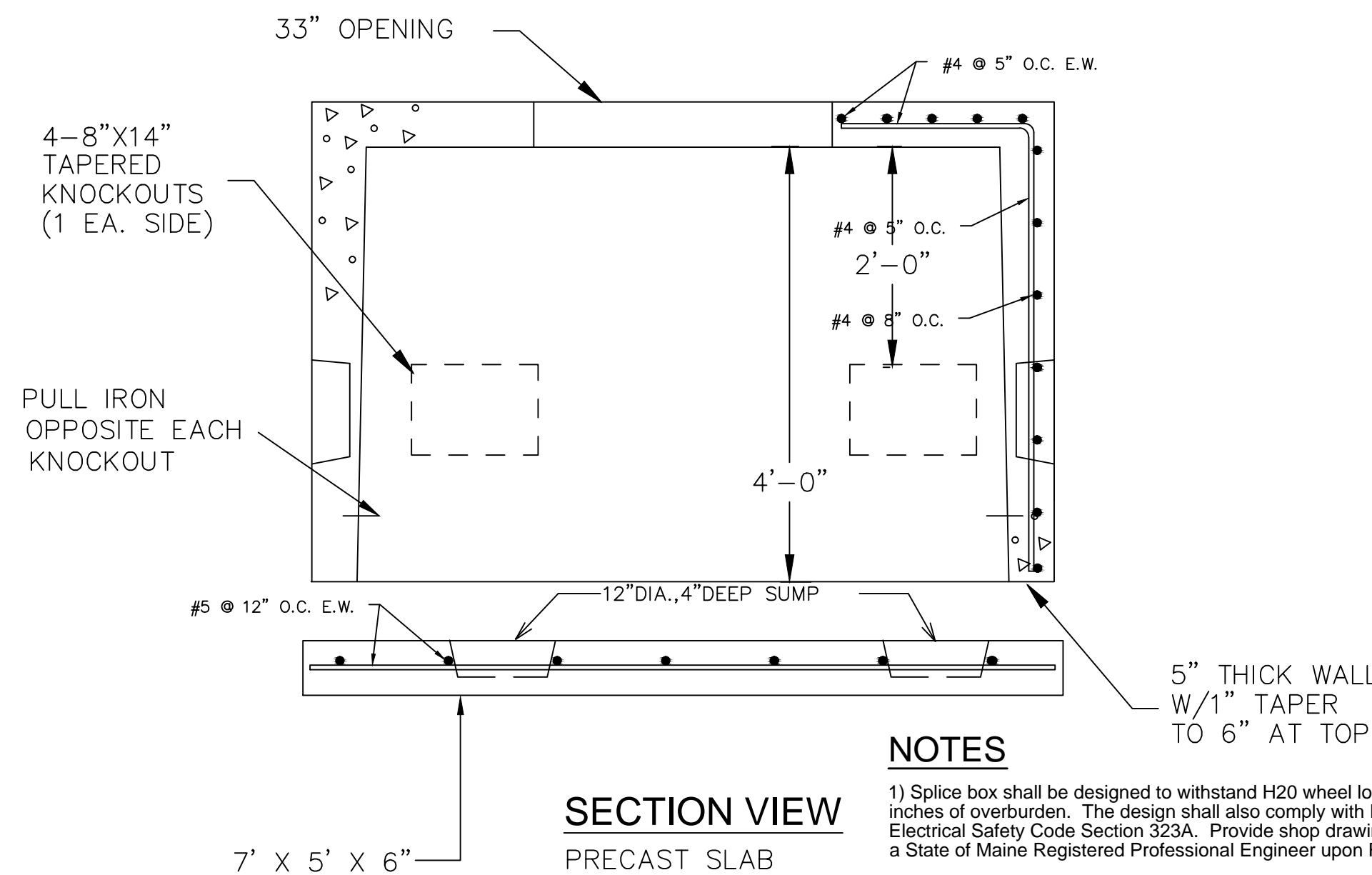
TOTAL AMOUNT OF BASE BID:

(AMOUNT IN WORDS)

The Owner reserves the right to reject any or all bids, negotiate with the successful bidder for a reduced scope of work, to waive any irregularities in the bidding process and award the contract to the lowest responsible bidder on the basis of the Base Bid Schedule with or without consideration of any Bid Alternates.



PLAN VIEW

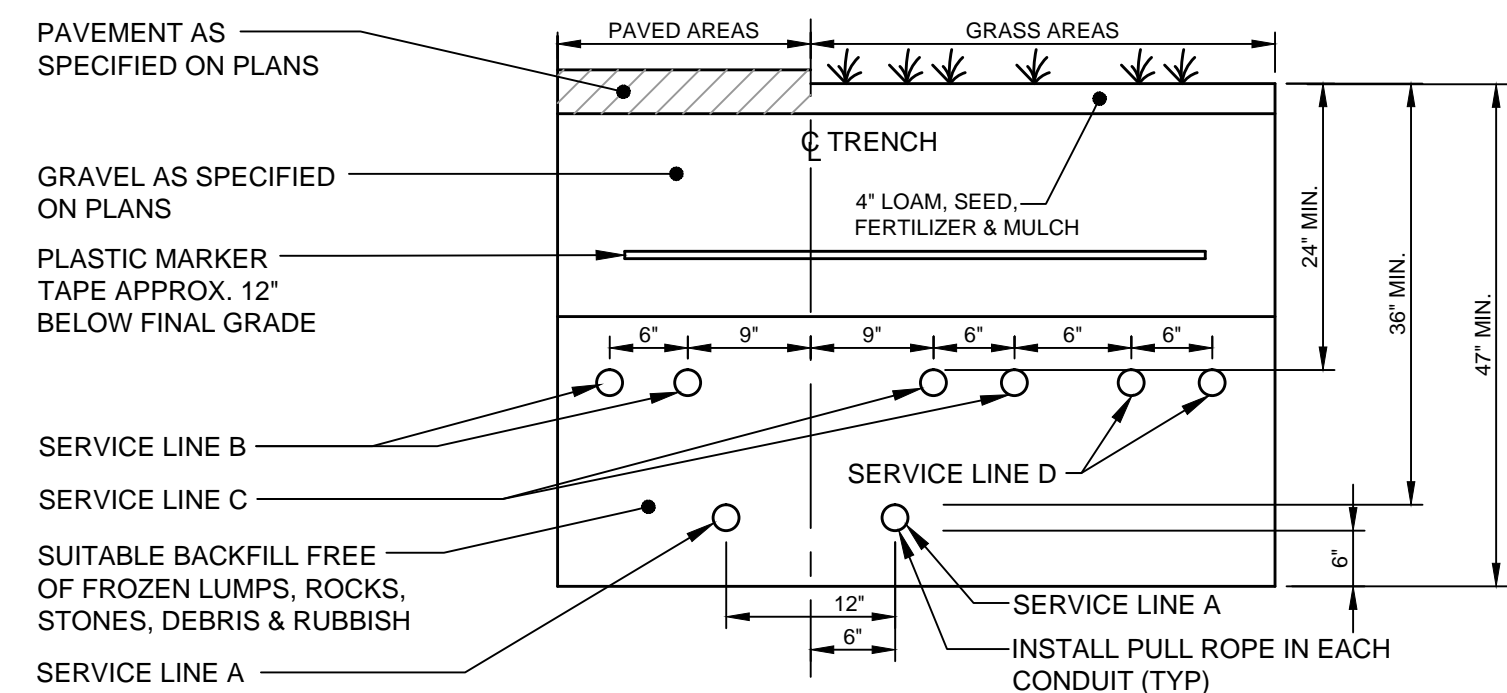


SECTION VIEW
PRECAST SLAB

A 4' x 6' SPLICE BOX WITH 32" ROUND COVER
N.T.S.

NOTES

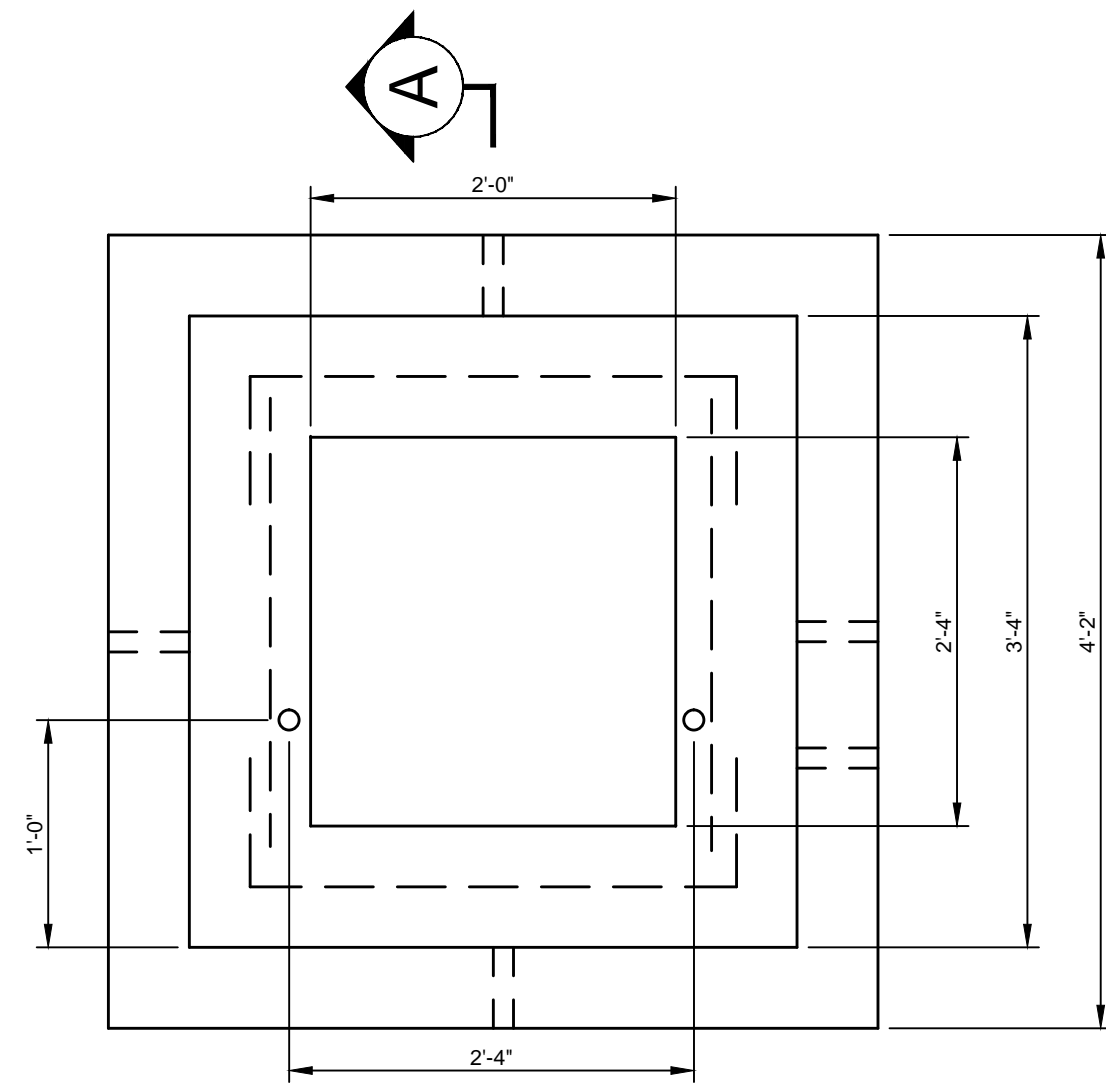
- 1) Splice box shall be designed to withstand H20 wheel loading with 6 inches of overburden. The design shall also comply with National Electrical Safety Code Section 323A. Provide shop drawings stamped by a State of Maine Registered Professional Engineer upon Request.
- 2) For use with 32" cover marked CMP Co., S/C62-1830 (Min. one course of brick to grade.)
- 3) Splice box and slab shall be set on a suitable gravel base.



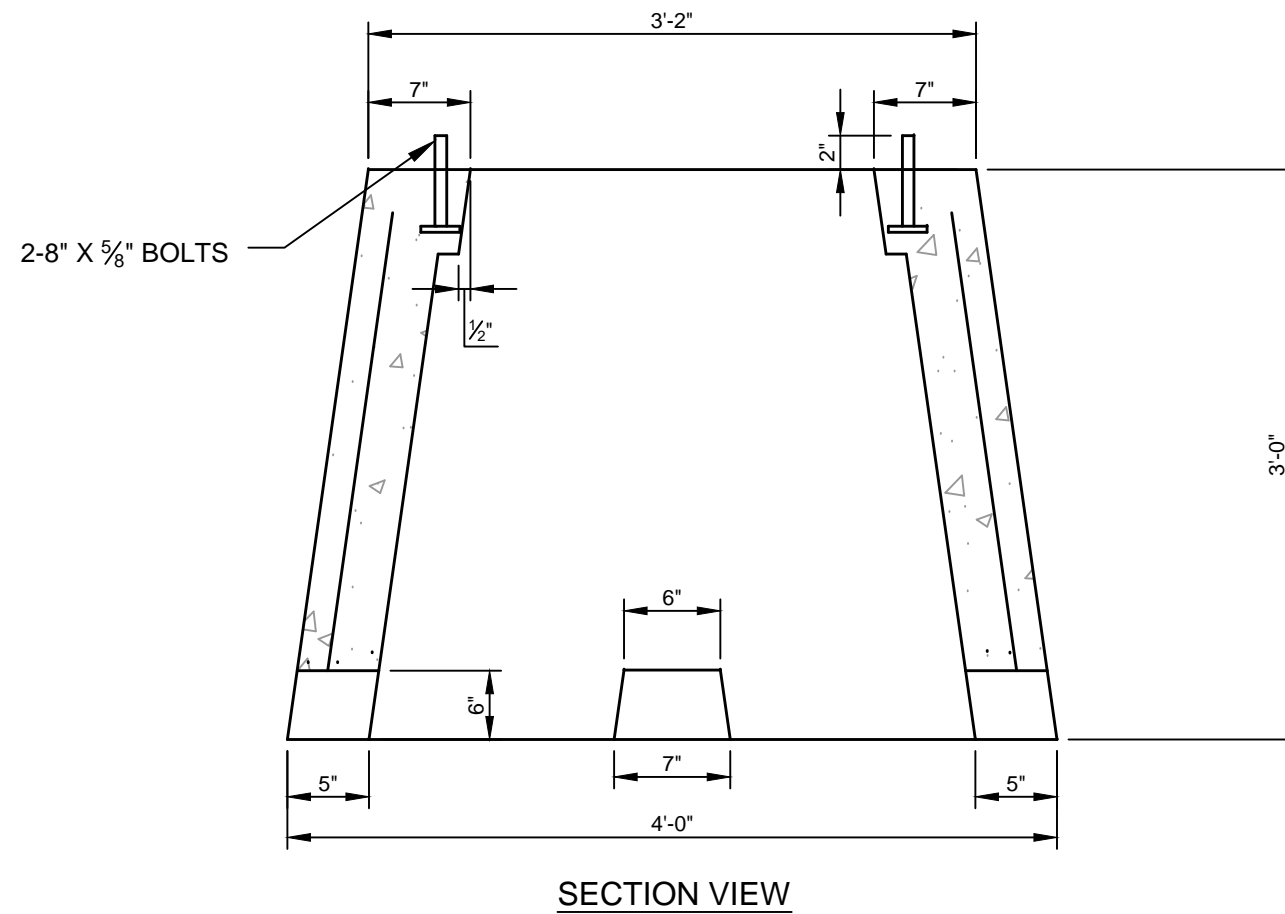
SERVICE	CONDUIT SIZE	CONDUIT TYPE	UTILITY	REMARKS
A	2 1/2" TO 5"	SCHEDULE 40 PVC ELECTRICAL GRADE	POWER	SEE NOTE 1
B	2" TO 4"	SCHEDULE 40 PVC	TELEPHONE	SEE NOTE 1
C	2"	SCHEDULE 40 PVC	TWC	
D	2"	SCHEDULE 40 PVC	OXFORD NETWORKS	

- NOTES:**
1. ONE CONDUIT CAPPED FOR SPARE, PROVIDE GALVANIZED STEEL LONG SWEEP AT RISER POLE AND EXTEND GALVANIZED CONDUIT TO 10' ABOVE GRADE AT POLE WITH STAND-OFF BRACKETS.
 2. SEE UTILITY PLANS FOR NUMBERS & SIZES OF CONDUITS TO BE INSTALLED FOR EACH UTILITY.

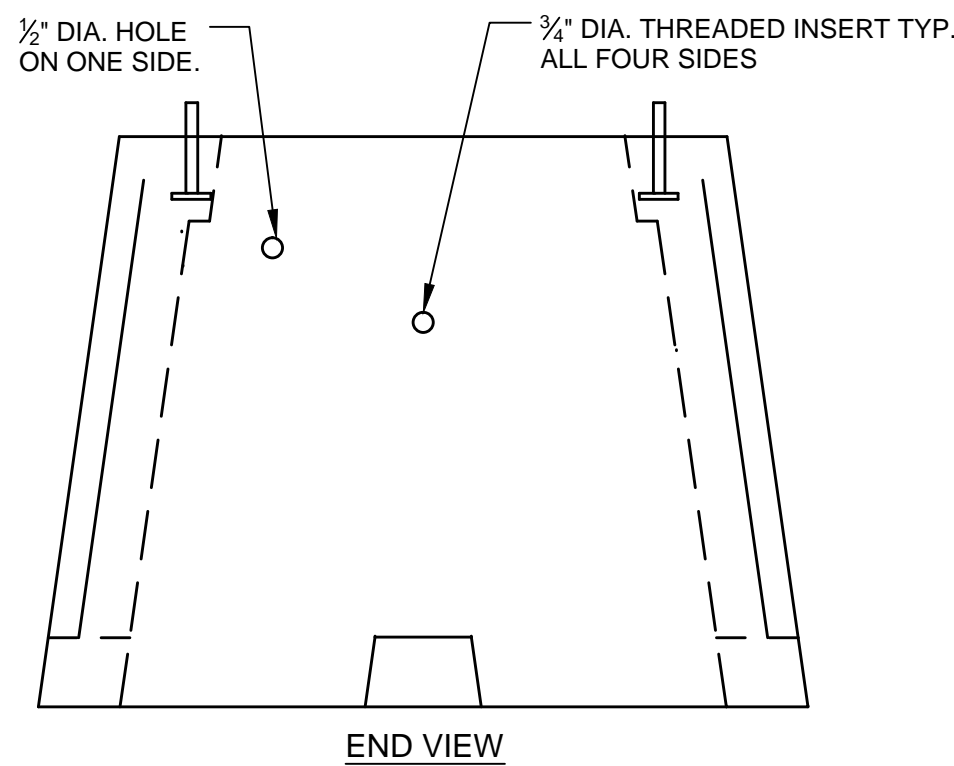
B UTILITY TRENCH - SECONDARY ELECTRIC, TEL. & COMM.
N.T.S.



PLAN VIEW



SECTION VIEW



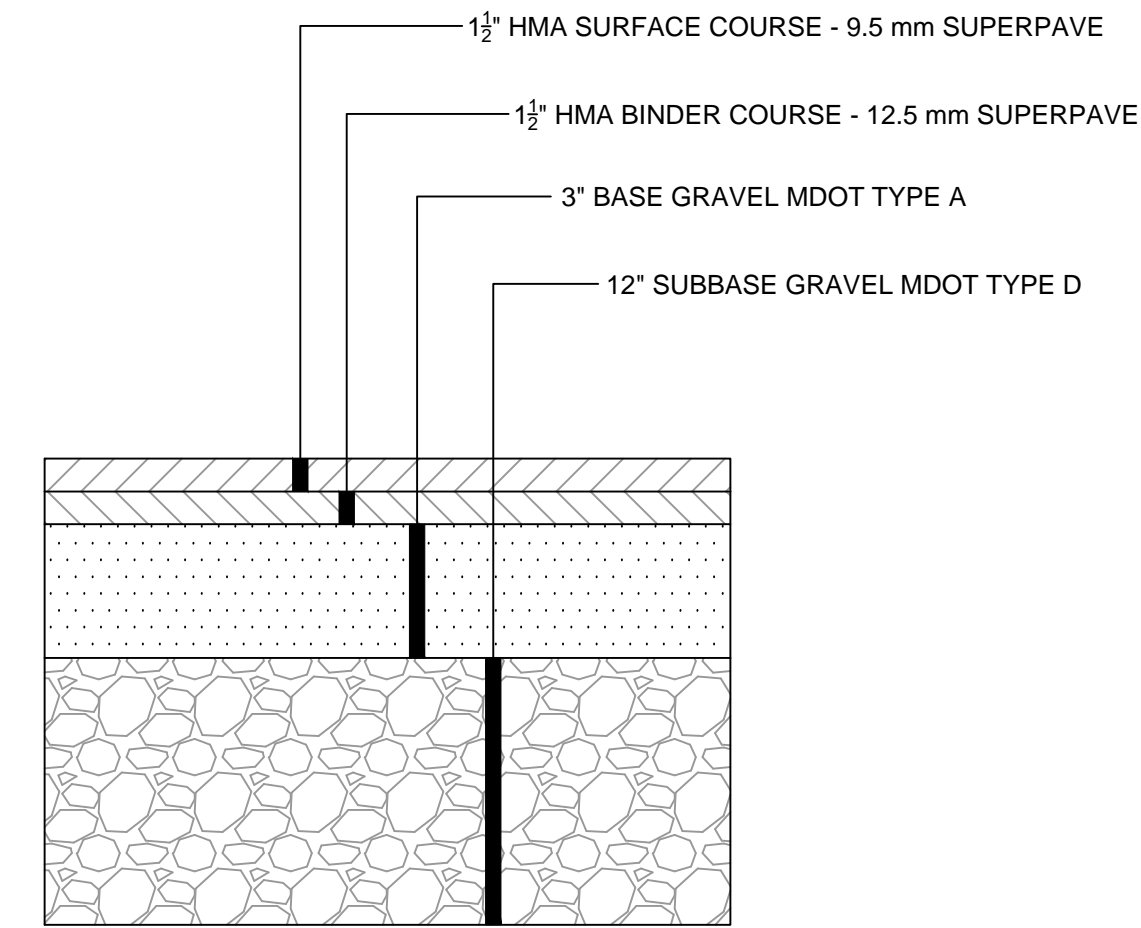
END VIEW

OPTIONAL COVER TO USE AS PULLBOX

NOTES:

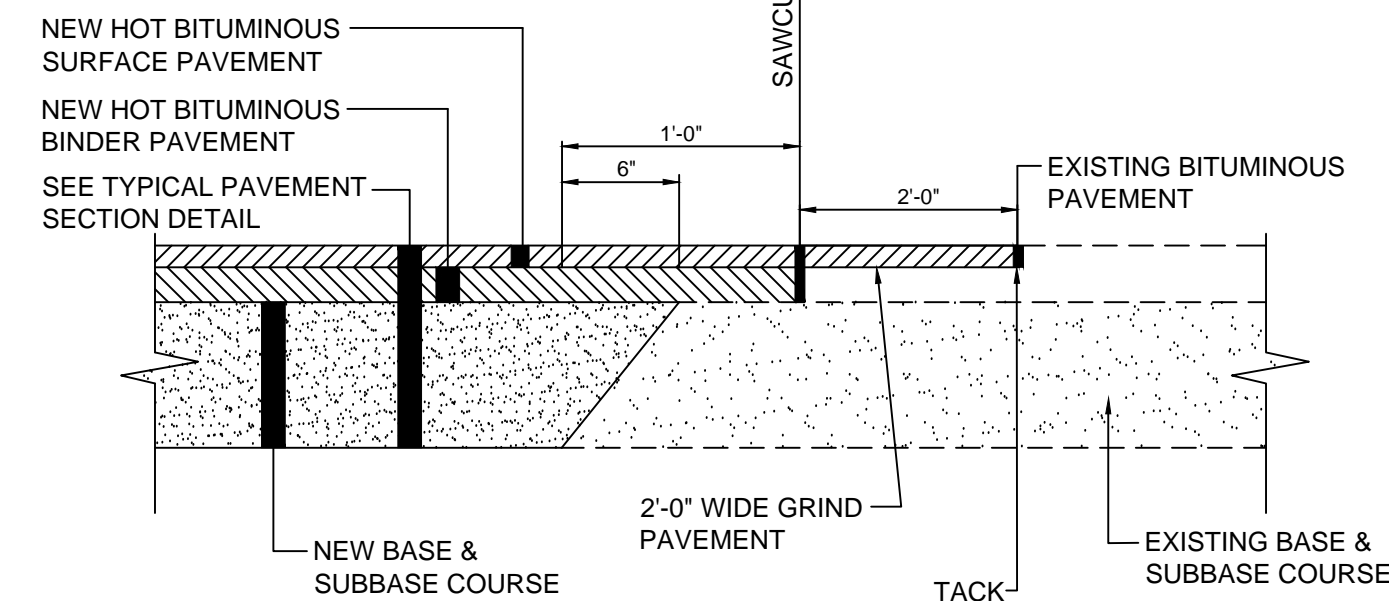
1. CONCRETE MINIMUM COMPRESSIVE STRENGTH 5,000 PSI @ 28 DAYS WITH STEEL REINFORCEMENT
2. AS PER CENTRAL MAINE POWER COMPANY REQUIREMENTS.
3. MANUFACTURED BY: SUPERIOR CONCRETE AUBURN, ME 207-784-9144

C SINGLE PHASE TRANSFORMER PAD
N.T.S.



PAVEMENT RESTORATION SECTION -
DRIVEWAYS AND NON-ROADWAY AREAS

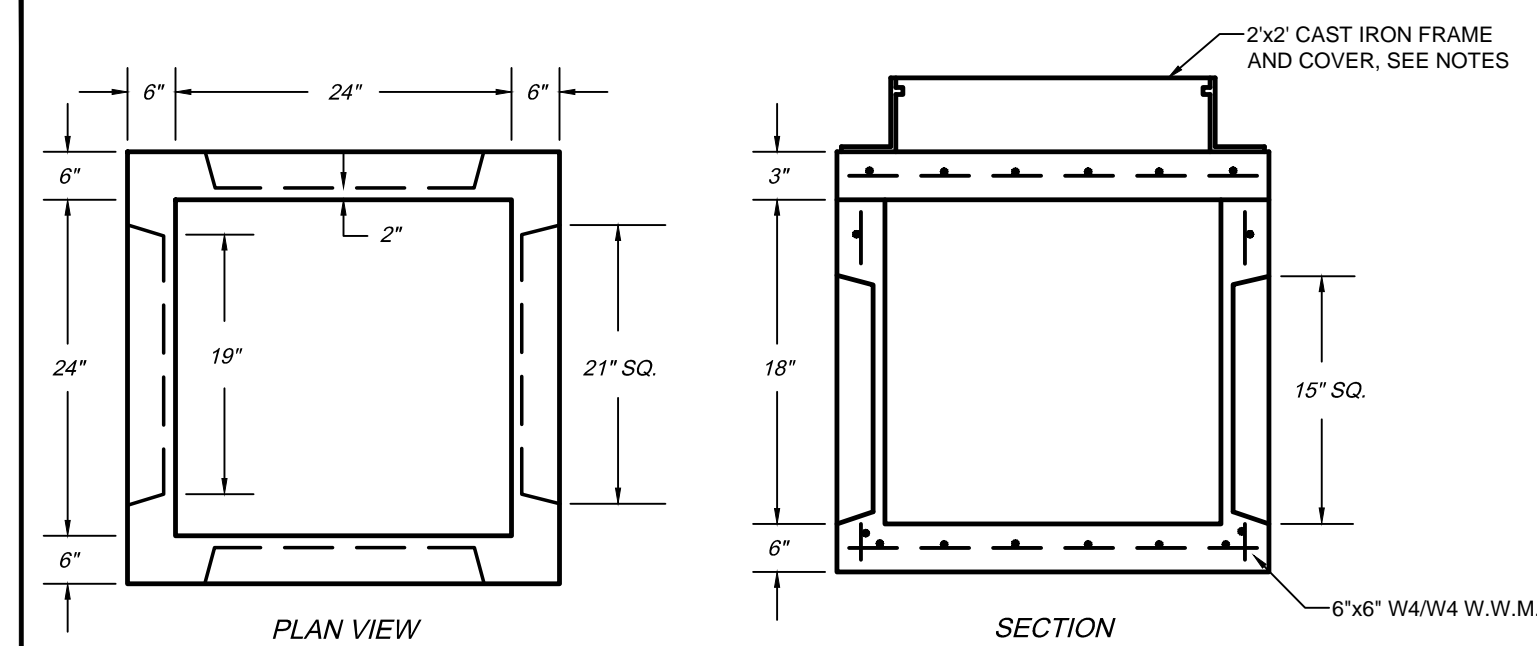
D N.T.S. (PAID UNDER ITEM NO. 416.02)



NOTES:

1. USE THIS DETAIL FOR THE RADIUS FILLET AT THE DRIVEWAY ENTRANCE TO THE PUBLIC STREETS OR TO MATCH PARKING LOT/DRIVE PAVEMENTS WHERE WIDENING OF EXISTING PAVEMENT AREA IS REQUIRED.
2. WHERE SURFACE PAVEMENT HAS NOT BEEN INSTALLED, THE 2'-0" WIDE GRIND IS NOT REQUIRED.

E PAVEMENT SAWCUT DETAIL
N.T.S.



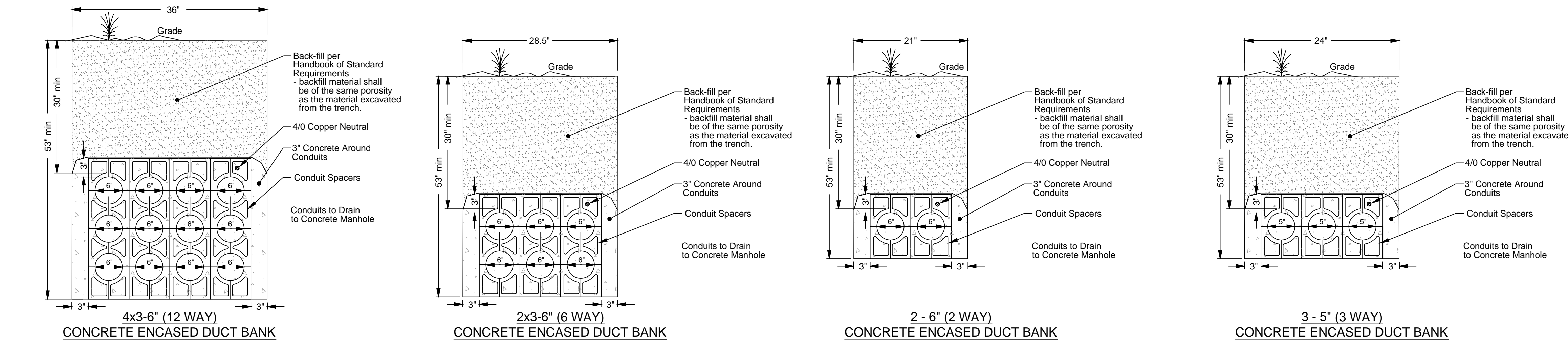
NOTES:

1. TYPICAL OF ELECTRICAL AND TELEPHONE; OTHER UTILITY COMPANIES MAY HAVE DIFFERENT SPECIFIC DIMENSIONAL REQUIREMENTS.
2. JUNCTION BOX SHALL BE DESIGNED TO COMPLY WITH NATIONAL ELECTRICAL SAFETY CODE SECTION 323A. PROVIDE SHOP DRAWINGS STAMPED BY AN ENGINEER LICENSED IN THE STATE OF MAINE UPON REQUEST.
3. JUNCTION BOX AND SLAB SHALL BE SET ON A SUITABLE GRAVEL BASE.
4. FRAME AND LID SHALL BE NEENAH R-6662-RH OR APPROVED EQUAL.

NOTES:

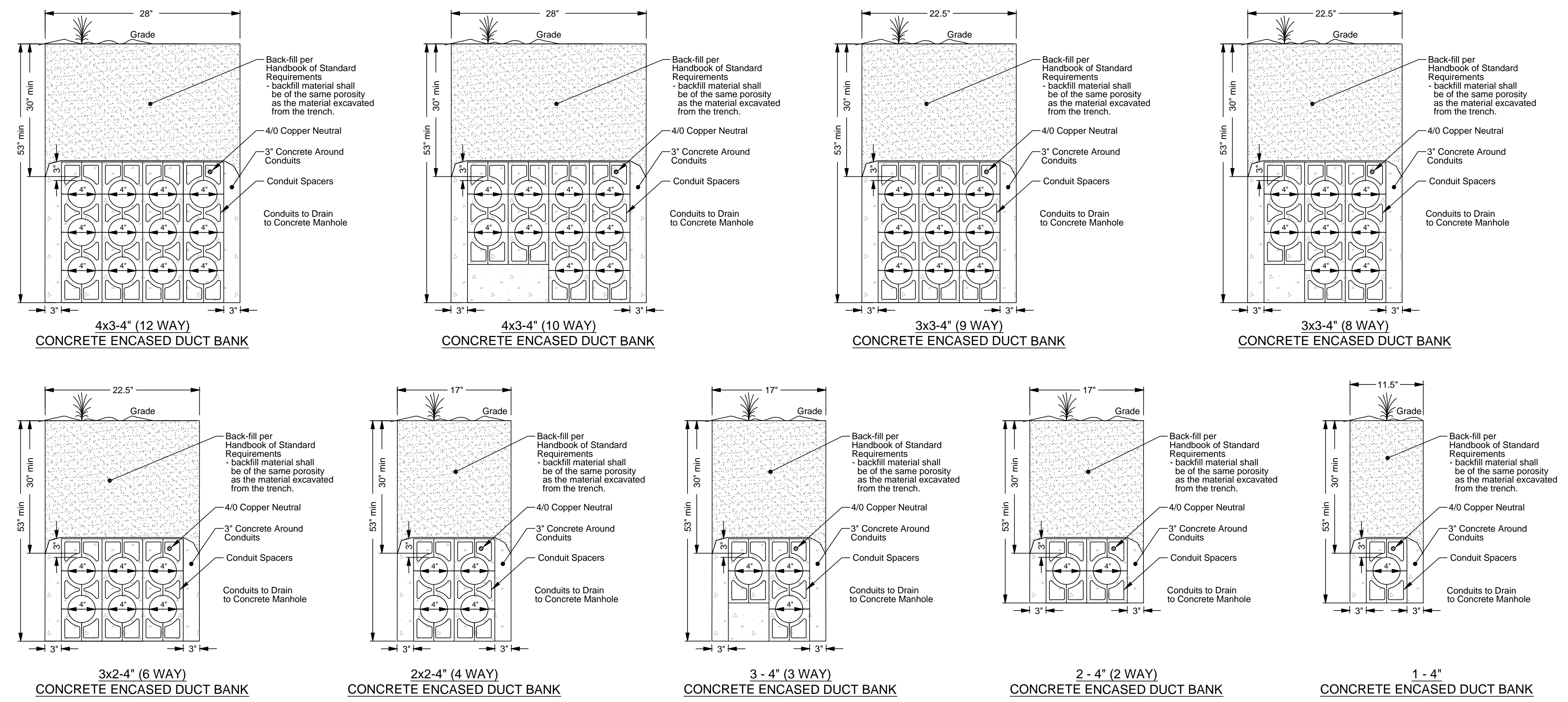
- * CONCRETE TO TEST 4000 PSI @ 28 DAYS
- * WEIGHTS:
SPLICE BOX - 1,755 LBS.
TOP SLAB - 340 LBS. (3" THICK)
* CAST IRON FRAME & COVER ALSO AVAILABLE, SQUARE COVER N1878 A6L

F 24" x 24" x 18" HANDHOLE
N.T.S.



(A) ELECTRICAL DUCT BANK DETAILS
N.T.S.

NOTE:
CONDUIT IN DRIVEWAYS AND PARKING LOTS TO BE CONCRETE ENCASED.



(B) DUCT BANK DETAILS - TELEPHONE, CABLE TV, COMMUNICATIONS, ETC.
N.T.S.

NOTE:
CONDUIT IN DRIVEWAYS AND PARKING LOTS TO BE CONCRETE ENCASED.

Stantec
482 Payne Road Scarborough, Maine 04074-8929
Tel.: 207.883.3335
www.stantec.com

DESIGNED: CDD	DATE: JAN 2018
CHECKED: J	SCALE: AS NOTED
FILE NAME: 195350475_rte_1_south_utility.dwg	JOB NO.

PROJECT: ROUTE 1 SOUTH UTILITY PROJECT
FALMOUTH, MAINE

SHEET TITLE: DETAILS

PREPARED FOR: TOWN OF FALMOUTH

REVISIONS

REV	DATE	DESCRIPTION
1		

SHEET NUMBER

6B

OF 6