

STATE OF MAINE  
STATE HIGHWAY COMMISSION

PLAN AND PROFILE  
STATE HIGHWAY "E"  
FALMOUTH  
CUMBERLAND COUNTY  
FEDERAL AID PROJECT NO. N.R.H.9

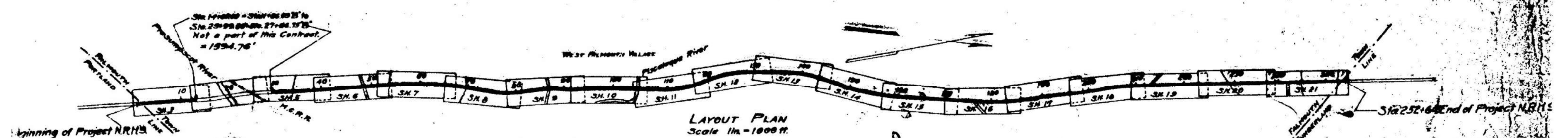
TOTAL LENGTH 4.440 MILES  
PLAN 1 IN. = 50 FT.  
PROFILE 1 IN. = 50 FT.  
V.P.R. 1 IN. = 5 FT.  
CROSS SECTIONS 1 IN. = 5 FT.

CONVENTIONAL SIGNS

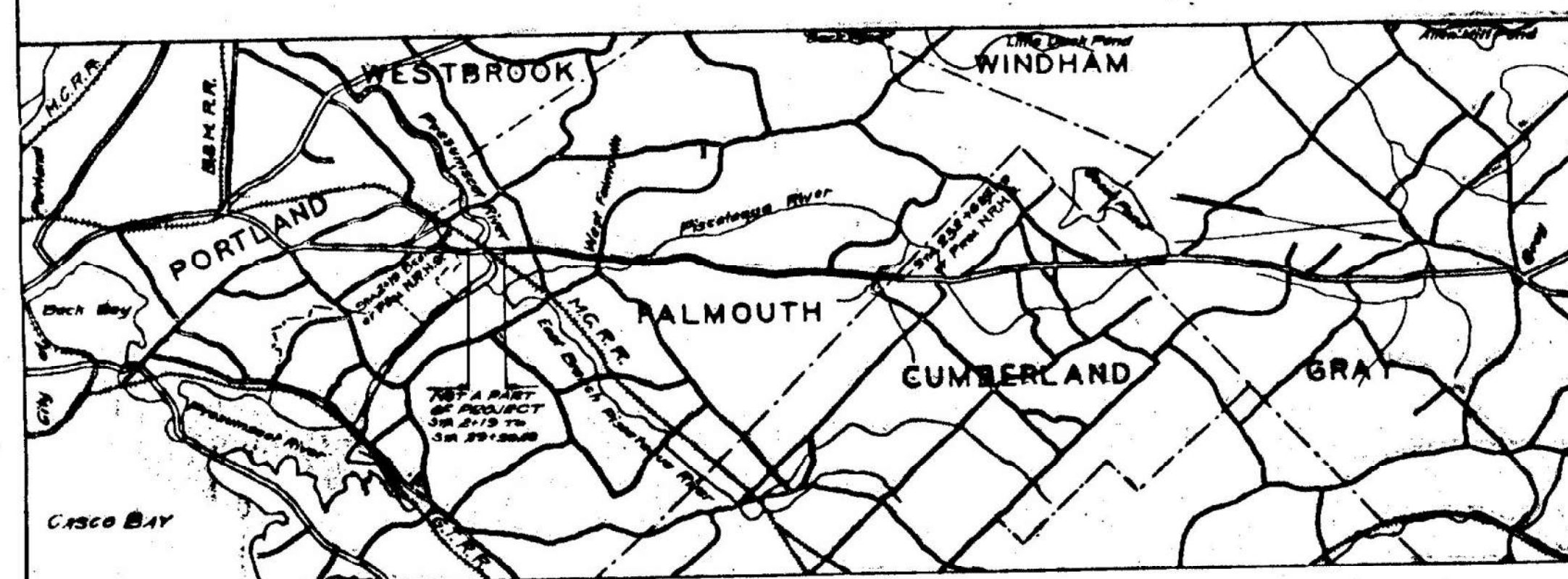
STATE OR NATIONAL LINE	SURVEY LINE
COUNTY LINE	CULVERT
TOWN LINE	SWAMP INLET
UNFENCED PROPERTY	TROLLEY POLE
FENCE	POWER POLE
RIGHT OF WAY LINE	TEL. POLE
TRAVELED WAY	MARSH
RAILROAD	TREE
RETAINING WALL	STONE WALL

INDEX OF SHEETS

SHEET No. 1	TITLE PAGE	STA. 2+19 to 252+00.5
SHEET No. 2	TYPICAL SECTIONS	
SHEET No. 3-21	PLAN AND PROFILE	STA. 2+19 to 252+00.5
SHEET No. 22-30	CROSS SECTIONS	STA. 2+19 to 252+00.5
SHEET No. 31	BRIDGES	
SHEET No. 32	SPECIAL DETAILS	



The Commission reserves the right to increase or decrease the length of this project, but in no event more than 25% of the original contract.



A PORTION OF CUMBERLAND COUNTY  
SCALE 1 INCH = 1 MILE (APPROX.)

Note: All work contemplated under this contract to be governed by, and in conformity with, the Specifications adopted March 21, 1934, with all subsequent revisions, except as modified on these Plans. The above specifications wherein not in conformity with the Federal Government's Rules and Regulations for work done under the National Industrial Recovery Act relative to the furnishing of all materials by the contractor, or otherwise not in conformity therewith, are hereby amended to meet said Rules and Regulations of the Federal Government.



APPROVED:  
MAINE STATE HIGHWAY COMMISSION  
*Paul C. Thurston*  
Paul C. Thurston  
DISTRICT ENGINEER

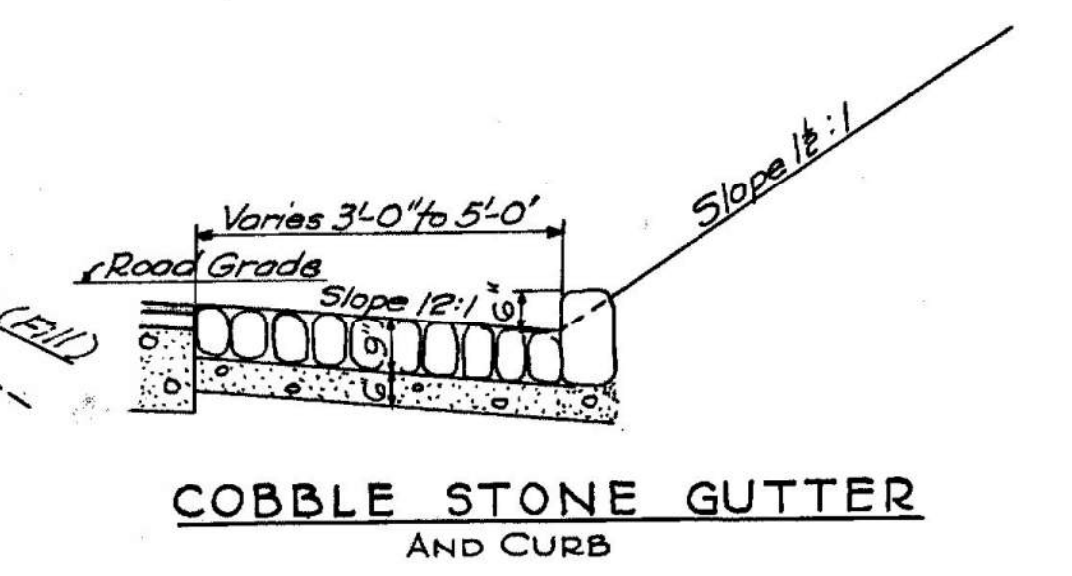
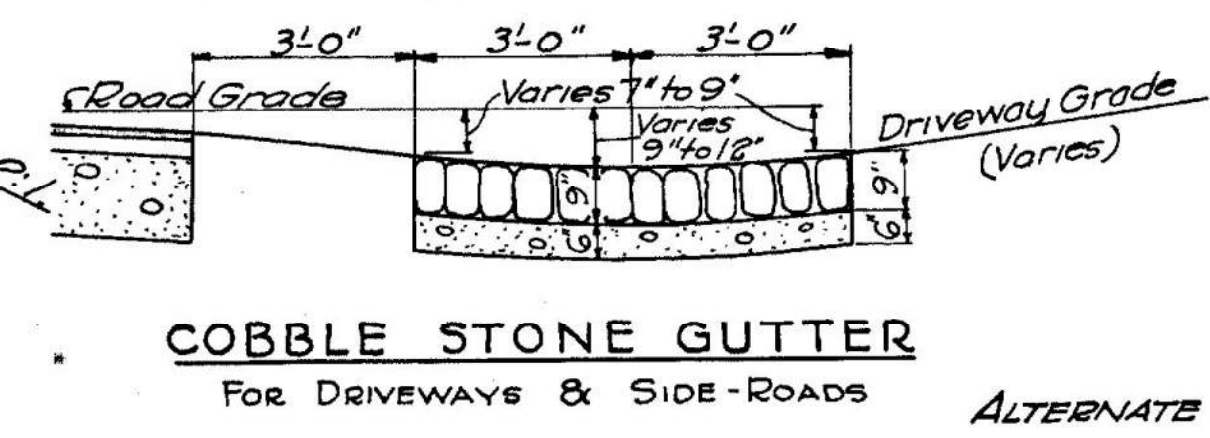
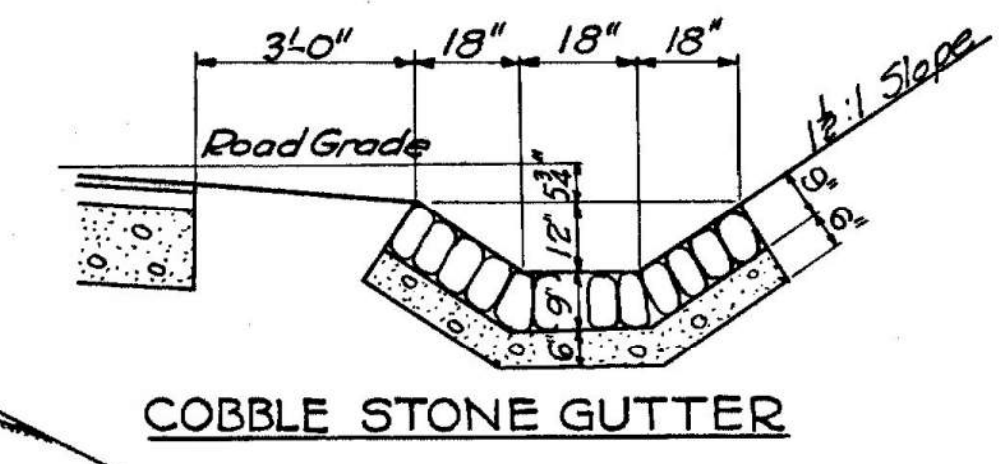
APPROVED:  
U.S. BUREAU OF PUBLIC ROADS  
*Paul C. Thurston*  
Paul C. Thurston  
DISTRICT ENGINEER



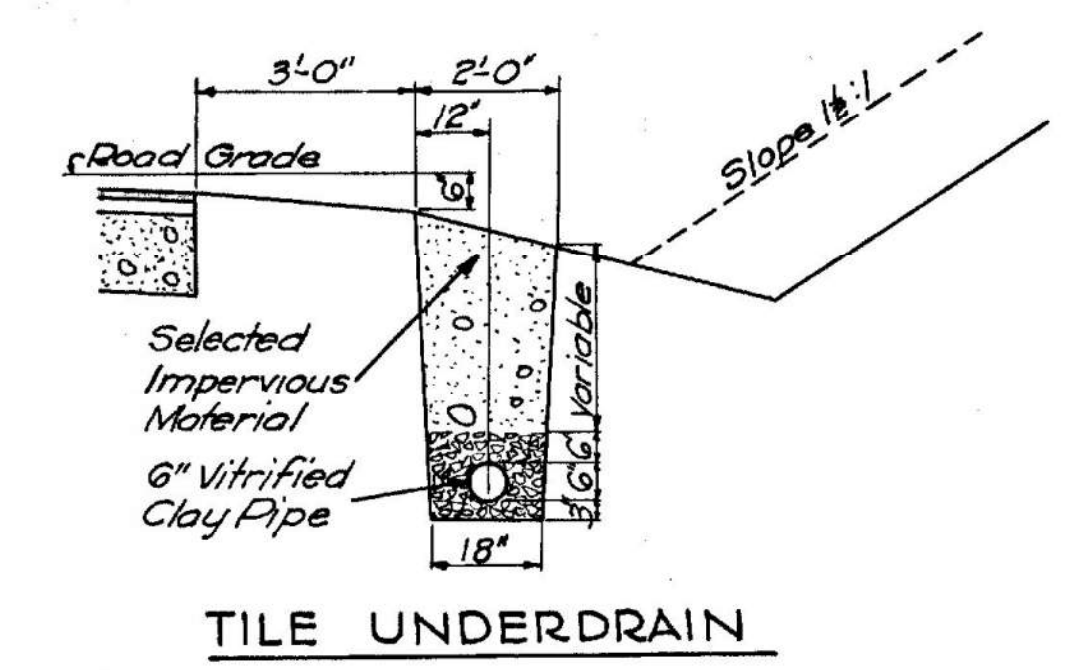




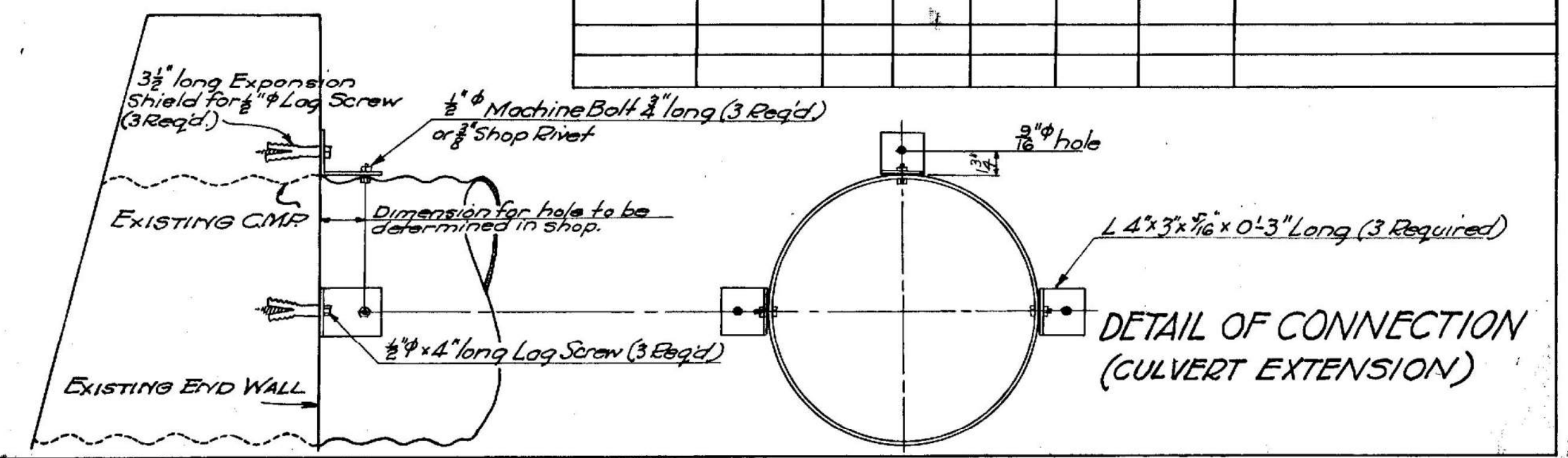
NOTE:  
PROPOSALS ARE TO BE RECEIVED ON  
ALTERNATE TYPES OF SURFACE COURSE  
AS INDICATED.



COBBLE STONE GUTTER  
AND CURB



TILE UNDERDRAIN



CULVERT DATA							
STA.	KIND	SIZE	LENGTH	CONCRETE A B		STEEL	REMARKS
2+25	C.M.P	18"	12' 2"				Extend old Culvert 24 1/2 Lt.
9+61	"	18"	8' 2"				" " " "
13+01	"	18"	10' 2"				" " " "
34+69	Conc. Box	3'x2'					Existing Conc. Box in good Cond.
44+75.5	"	2'x2'		0.77	6 1/2 lbs		Raise End Walls 18"
53+86.5	Conc. Box	3'x2'		1.06cy	70 1/2 lbs		Raise End Walls 15"
56+89.5	"	3'x2'		0.85cy	70 1/2 lbs		" " " 12"
65+52.5	C.M.P	18"	8' 2"				Extend old Culv. 8' 2"
70+48.5	Conc. Box	4'x3'					Raise End Walls 12'
90+25.5	"	"		5.0cy	3.75cy	550 lbs	Connect with R.R. Culvert.
90+25.5	Drop Inlet	12"					
94+86.5	C.M.P	12"	12' 2"		1.11cy	6 1/2 lbs	1 End Wall & Extended 12' 2" Lt.
116+18	"	18"	6' 2"				Extend old culv. 24 1/2 Lt.
124+24	"	16"	5' 2"				" " " 24 1/2 Lt.
144+47	Conc. Box	2'x2'		0.39cy	32 lbs		Raise End Walls 8' on Lt.
157+17	C.M.P	18"	8' 2"				Extend old Culv. 24 1/2 Lt.
162+64	"	16"	8' 2"				" " " "
164+84	"	18"	8' 2"				" " " "
195+46	Conc. Box	4'x2'		2.0cy	7.83cy	350 lbs	Extend 3' R & 3' L - 2' New End Walls
211+21	C.M.P	18"	6' 2"				" 24 1/2 Lt.
231+08	"	18"	6' 2"				" " " "
225+85	Conc. Box	3'x2'		2.7cy	7.64cy	350 lbs	Extend 3' L & 3' R - 2' New End Walls

WIDENED & SUPERELEVATED



