

Surveying Services – Town Landing Interceptor For the Town of Falmouth Wastewater Department

Addendum #1

Question 1: Will you want the survey teams to pick up observable utility information on public property? Or have an underground utility marking company physically mark out the private underground utilities?

Response 1: Pick up observable utility information on public property / within the easement only. Underground utility marking for private utilities is not necessary.

Question 2: Would the Town be accepting of the use of drone technology for topographic survey capable of 0.1' vertical accuracy?

Response 2: Yes, this is acceptable. References included in the submittal must have utilized the proposed technology / methodology. Also submit product information demonstrating accuracy. Please note that much of the sewer / easement route is tree covered. Field work to locate sewer rims and inverts, boundary information and to fill in gaps left by the drone survey are required.

Question 3: I do not see a project completion date. Do you have a date the Town is looking to have the survey completed by? Or are we okay with filling in a date that works for us? Will the timeline of the firm's ability to complete the project be weighed in making a decision.

Response 3: We are hoping to complete this project in the spring / summer of 2024. Please provide the proposed schedule as part of the bid response. Proposed schedule will not be weighed in the decision (assuming that respondents can complete the project this year).

Question 4: Would a profile of the sewer infrastructure work better for the Town rather than individual section cuts? The profile would show how close the pipe is to grade.

Response 4: A profile along the sewer centerline is not needed. We are interested in how close the sewer pipe is to the slope, thus the request for cross-section (perpendicular to the pipe) cuts. We envision that after the fieldwork is completed, the successful respondent will work with Town Staff to identify the areas of highest concern (i.e. closest proximity to the slope surface).

Question 5: Are the sewer easement deeds going to be provided by the Town or do we need to research them?

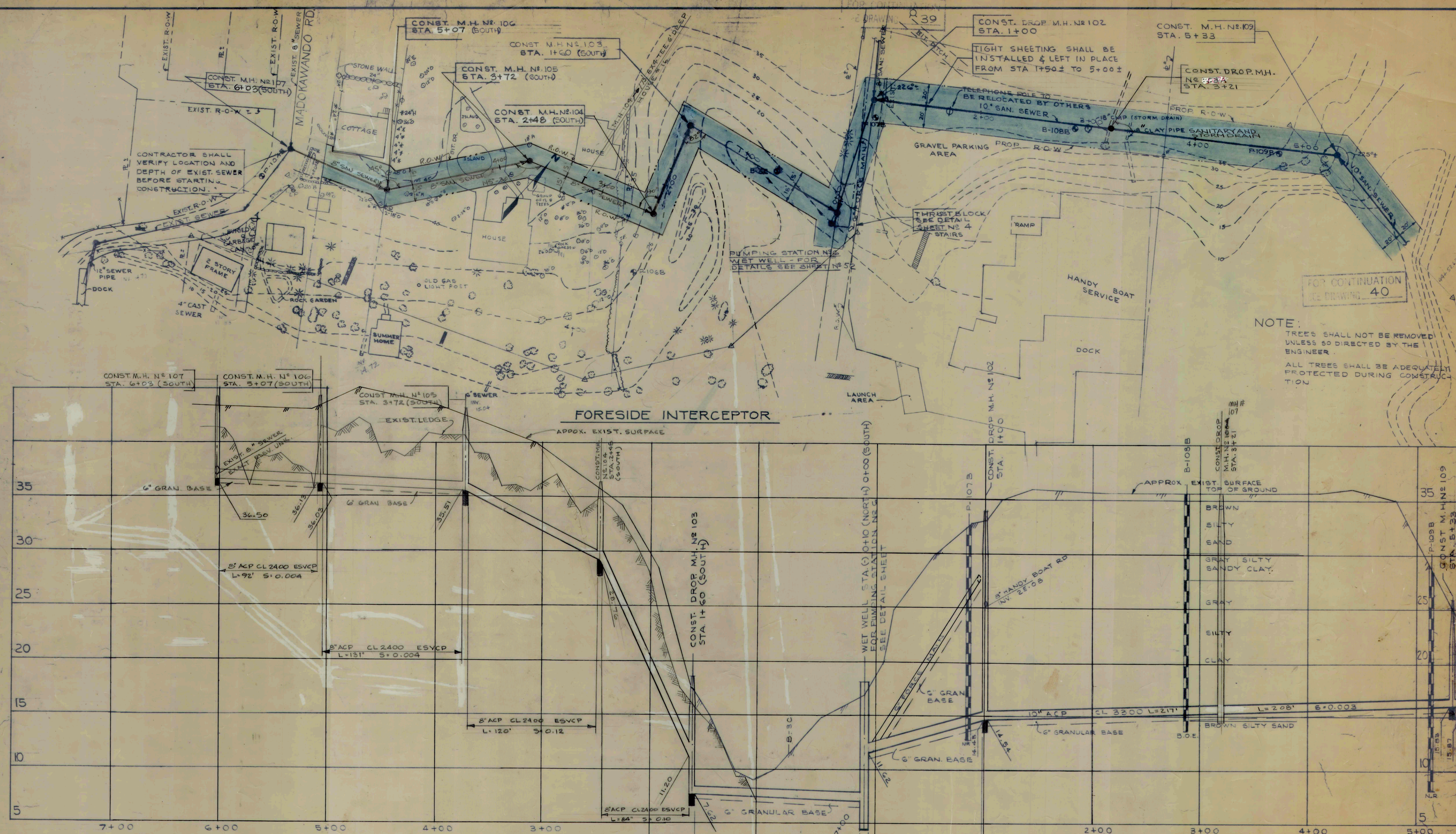
Response 5: Please include deed research in the bid.

Question 6: Does the Town have any plans they could pass along showing the sewer and easement location so we can better determine the effort required for field locations?

Response 6: Please see attached for record drawings of the sewer installation as well as right-of-way drawings.

TOWN OF FALMOUTH WASTEWATER DEPARTMENT

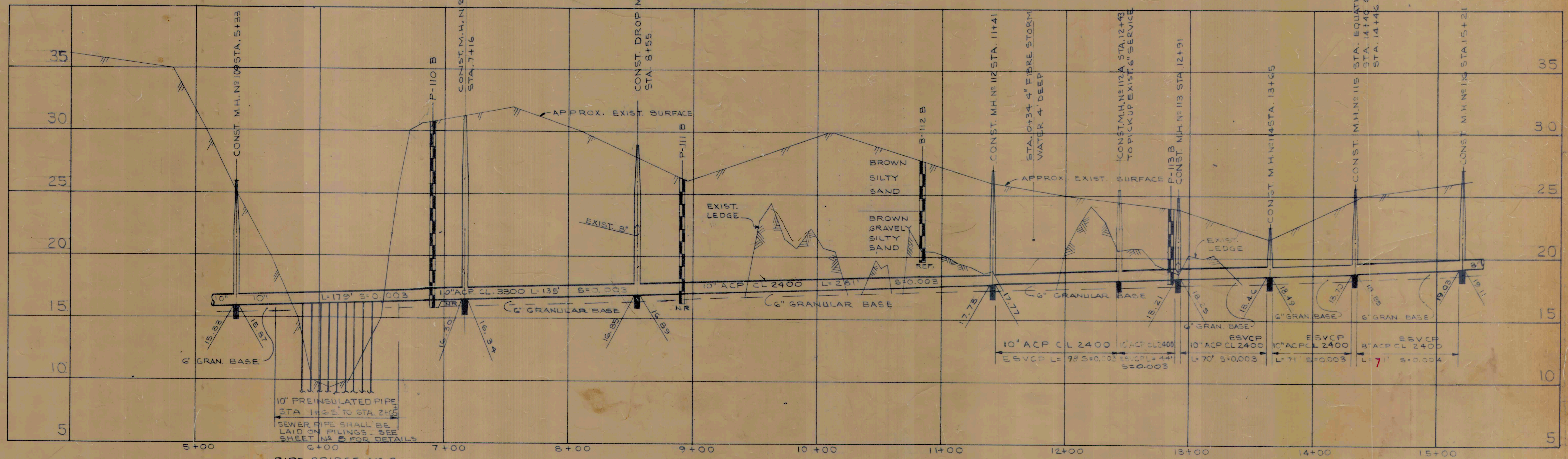
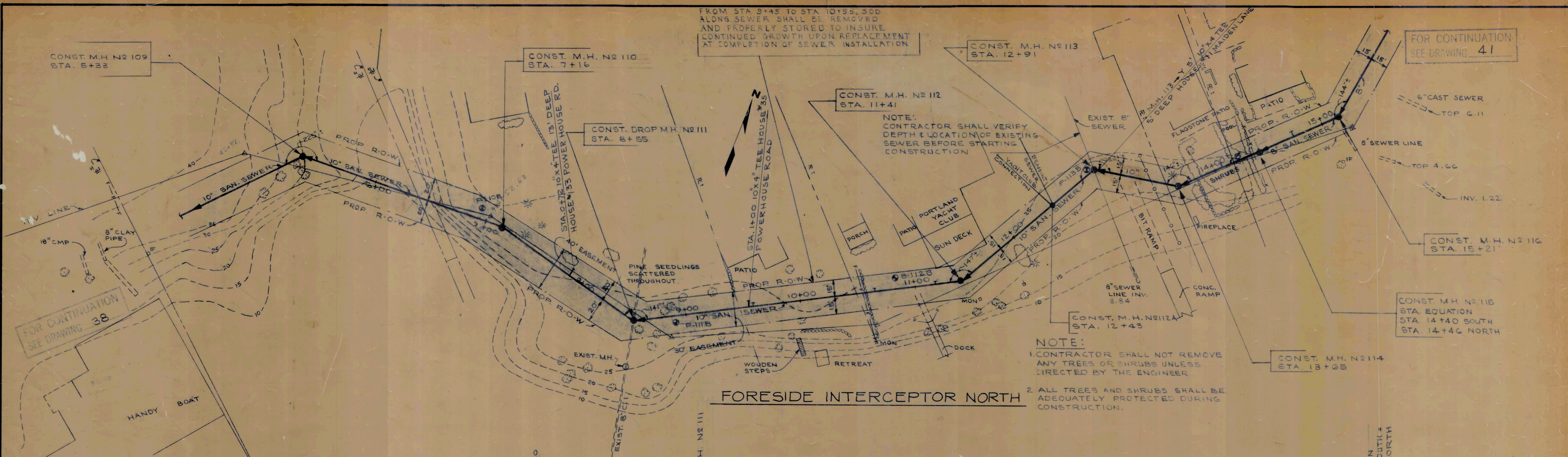
96 Clearwater Drive • Falmouth, ME 04105 • 207-781-4462
www.falmouthme.org



DATE	1/7/70	REVISION	RELOCATED SEWER AND R.O.W. FROM M.H. 103 TO M.H. 107
TOWN OF FALMOUTH, MAINE			
INTERCEPTOR			
FORESIDE INTERCEPTOR			
STA. 0+00 TO STA. 7+00 SOUTH			
STA. 0+00 TO STA. 5+40 NORTH			
CONTRACT NO. 2			
EDWARD C. JORDAN CO., INC.			
CIVIL AND SANITARY ENGINEERS			
PORTLAND, MAINE			
DATE JAN. 1969			
SURVEY	PLAT	FIELD BOOK	DRAWN
SY			DESIGNED
			CHECKED
38063.2			38

RECORD DRAWINGS

FOR GENERAL NOTES
SEE DRAWING 3



RECORD DRAWINGS

DATE	REVISION
TOWN OF FALMOUTH, MAINE	
INTERCEPTOR	
FORESIDE INTERCEPTOR NORTH	
STA. 5+50 TO STA. 15+25	
CONTRACT No. 2	
EDWARD C. JORDAN CO., INC.	
CIVIL AND SANITARY ENGINEERS	
PORTLAND, MAINE	
DATE JAN. 1969	
SCALE: 1"=40' HOR.	
SCALE: 1"=4' VERT.	
SURVEY	DESIGNED
PLAT	CHECKED
BOOK	
SY	
38063.2	40

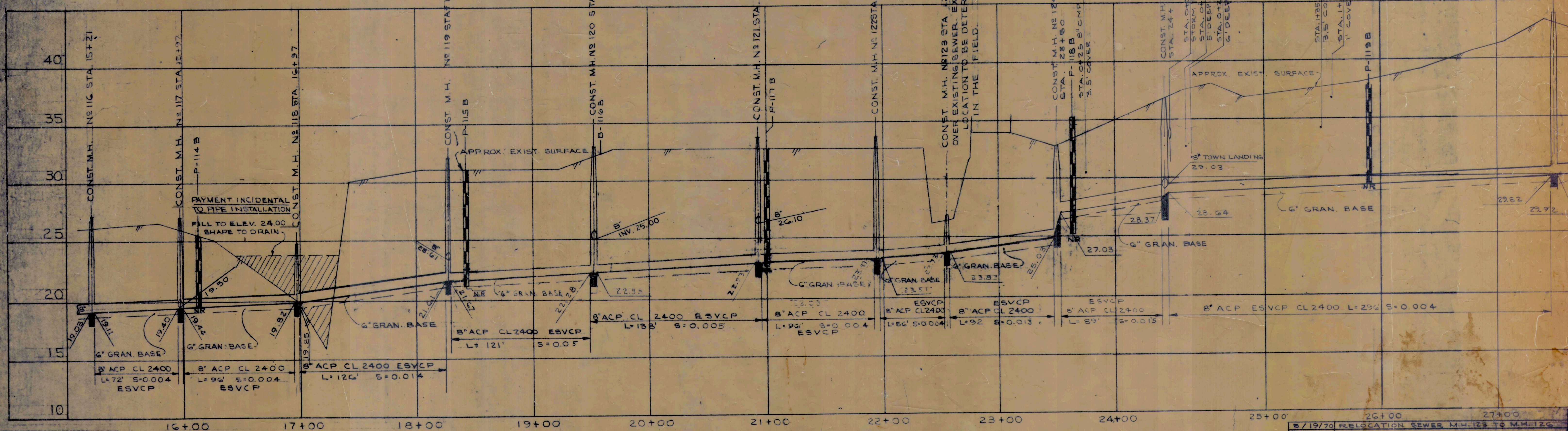
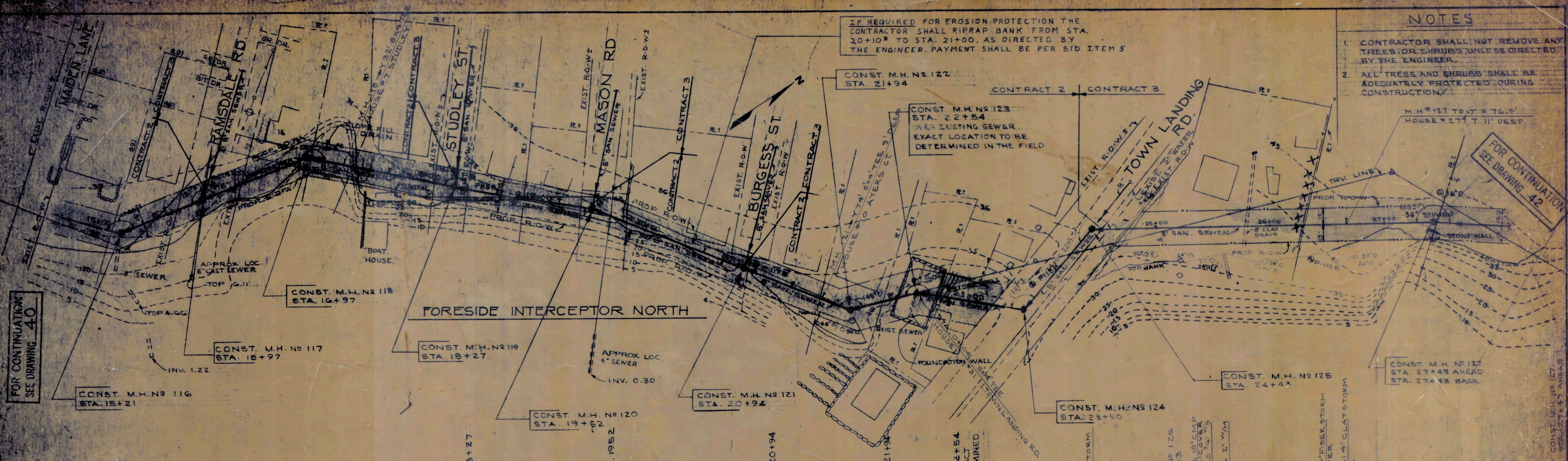
FOR CONTINUATION
SEE DRAWING 40

IF REQUIRED FOR EROSION PROTECTION THE
CONTRACTOR SHALL RIPRAP BANK FROM STA.
20+10 TO STA. 21+00, AS DIRECTED BY
THE ENGINEER. PAYMENT SHALL BE PER BID ITEM 5

NOTES

1. CONTRACTOR SHALL NOT REMOVE ANY TREES OR SHRUBS UNLESS DIRECTED BY THE ENGINEER.
2. ALL TREES AND SHRUBS SHALL BE ADEQUATELY PROTECTED DURING CONSTRUCTION.

FOR CONTINUATION
SEE DRAWING 42



RECORD DRAWINGS

FOR GENERAL NOTES
SEE DRAWING 3

5/19/70 RELOCATION SEWER M.H. 125 TO M.H. 126	
DATE	REVISION
11/76/69	LOWERED SEWER M.H. 119 TO M.H. 124
TOWN OF FALMOUTH, MAINE	
INTERCEPTOR	
FORESIDE INTERCEPTOR NORTH	
STA 15+21 TO STA 26+73	
CONTRACT NO. 2	
EDWARD C. JORDAN CO. INC.	
CIVIL AND SANITARY ENGINEERS	
PORTLAND, MAINE	
SCALE: 1"=40' HOR.	DATE JAN. 1985
1"=4' VERT.	
SURVEY	BY
11/13/70	RELOCATION SEWER M.H. 125 TO M.H. 127
38063.2	(4)

REVISED NOV 1970

CONST. M.H. NO. 127
STA. 27+49 AHEAD
STA. 27+43 BACK

FOR CONTINUATION
SEE DRAWING 41

FORESIDE INTERCEPTOR NORTH

FILL SHALL BE GRADED TO
PROVIDE DRAINAGE FROM
GULLY WITHOUT PONDING.
CHANNEL AREA SHALL BE RIP-
RAPED. PAYMENT FOR RIPRAP
SHALL BE MADE UNDER BID
ITEM N-2-B

CONST. M.H. NO. 128
STA. 28+99

CONST. M.H. NO. 129
STA. 31+46

CONST. M.H. NO. 130
STA. 32+69

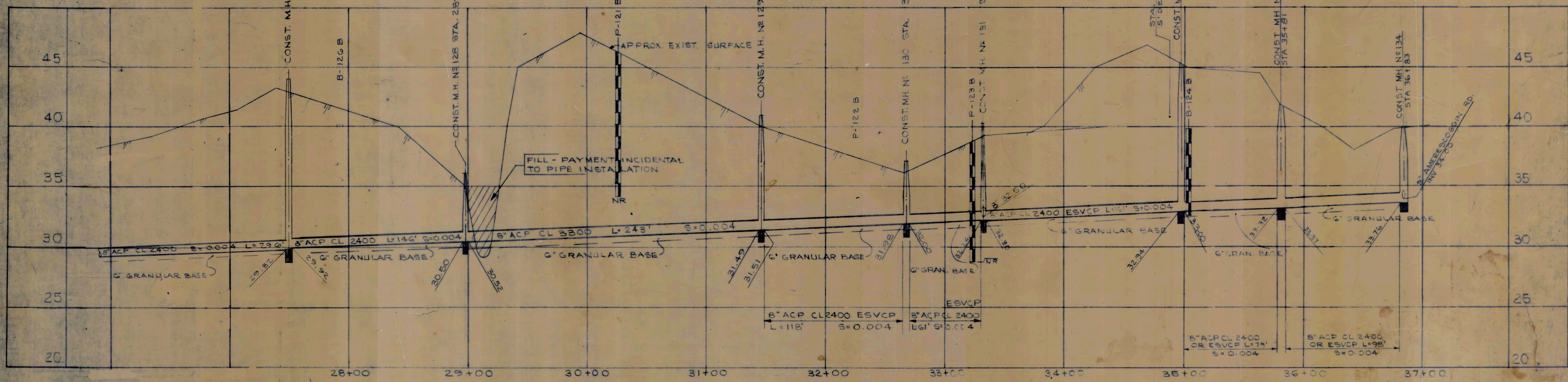
CONST. M.H. NO. 131
STA. 33+82

CONST. M.H. NO. 134
STA. 36+83 X-COUNTRY
STA. 0+00 AMERESCOGGIN RD.

CONST. M.H. NO. 133
STA. 35+81

CONST. M.H. NO. 132
STA. 34+98
CONTRACTOR SHALL VERIFY
LOCATION & DEPTH OF EXIST. SEWER
BEFORE STARTING CONSTRUCTION

- NOTE: ① CONTRACTOR SHALL
NOT REMOVE ANY TREES
OR SHRUBS UNLESS DIRECTED
BY THE ENGR.
② TREES AND SHRUBS SHALL BE
ADEQUATELY PROTECTED
DURING CONSTRUCTION



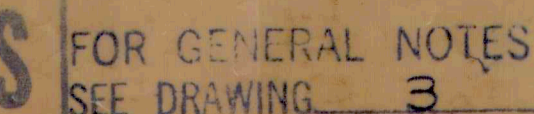
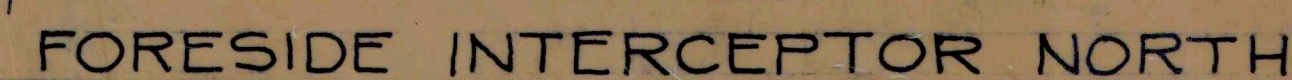
DATE	REVISION
11-13-69	RELOCATION OF SEWER MH 131 TO MH 134
TOWN OF FALMOUTH, MAINE	
INTERCEPTOR	
FORESIDE INTERCEPTOR NORTH	
STA. 26+75 TO STA. 37+15	
CONTRACT NO. 2	
EDWARD C. JORDAN CO., INC.	
CIVIL AND SANITARY ENGINEERS PORTLAND, MAINE	
SCALE	DATE
1" = 40' HOR. 1" = 4' VERT.	JAN. 1969
DRAWN	CHECKED
S.Y.	38063.2

RECORD DRAWINGS

11/13/70 RELOCATION SEWER MH 125 TO MH 127

REVISED NOV

1. CONTRACTOR SHALL NOT REMOVE ANY TREES OR SHRUBS UNLESS DIRECTED BY THE ENGINEER
2. ALL TREES AND SHRUBS SHALL BE ADEQUATELY PROTECTED DURING CONSTRUCTION



DATE	REVISION									
TOWN OF FALMOUTH, MAINE										
INTERCEPT										
FORESIDE INTERCEPT NORTH										
AMERESCOGIN TO UNDERWOOD										
CONTRACT N ^o 2										
EDWARD C. JORDAN CO., INC.										
CIVIL AND SANITARY ENGINEERS										
PORTLAND, MAINE										
DATE JAN. 1969										
SCALE = 40' HOR. " = 4' VERT.										
SURVEY	PILOT	FIELD BOOK	DRAWN	DESIGNED	CHECKED	38063.2		43		

TOWN LANDING ROAD

U-17 61
CHARLOTTE MOORE

U-17 54
HAROLD DEXTER JR.

U-17 53 B
EARLE W. MOORE
SHIRLEY E. MOORE

U-17 52
N. RICHARD KNUDSEN

U-17 41
LEWIS E.
DOROTHY
PLUMMER

BROADWAY (BROAD ST)

U-17 39
CASCO TERRACE
ASSOCIATION

U-17 4
ROBERT E. CHRISTINE
MARTINER

U-17 3
LAWRENCE E.
ALDOVA PERKINS

U-17 40
RICHARD E. JANE S.
HOWISON

CASCO BAY

Mag 1968

WELLS PASSAGEWAY

CASCO TERRACE

WELLS PASSAGEWAY

SEWER RIGHT OF WAY PLAN
FALMOUTH MAINE

E. C. JORDAN

FORESIDE INTERCEPTOR
SHEET 1 OF 2

DATE 12-10-1968
21 91-1

