

# Route 88 Intersection Study

## Public Forum December 11, 2019

Johnson/Town Landing  
Roads Intersection

Depot Road Intersection

# Agenda



PROJECT  
OVERVIEW



PUBLIC INPUT



NEXT STEPS



# Study Purpose

Discuss current conditions and future of the

- Johnson/Town Landing Roads and
- Depot Road intersections with Route 88.

Topics will include, but not be limited to:

- bicycle and pedestrian safety;
- traffic volume, safety, and flow;
- general appearance of roadway and roadway accompaniments; and
- lighting.



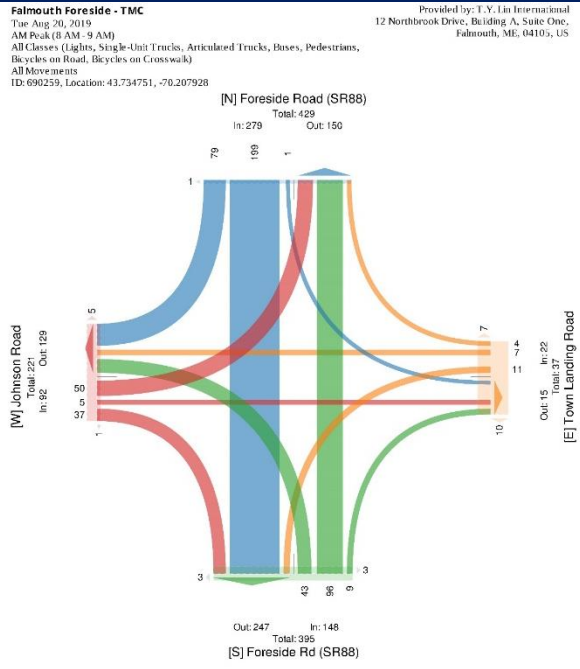
# Johnson Road/Town Landing Road



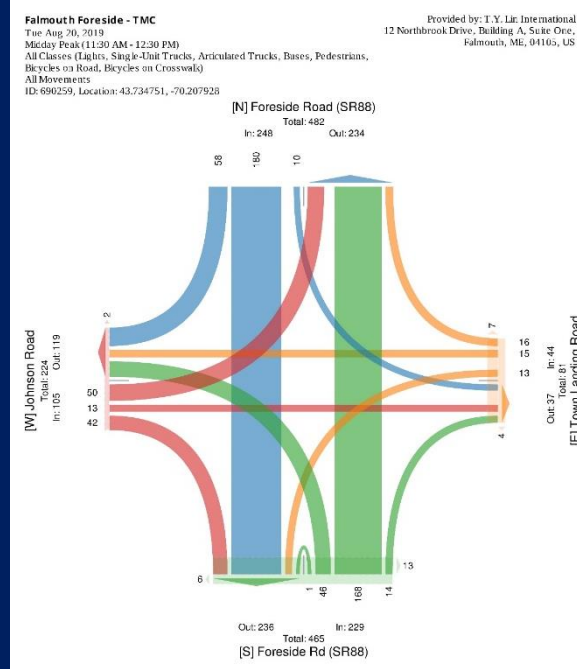




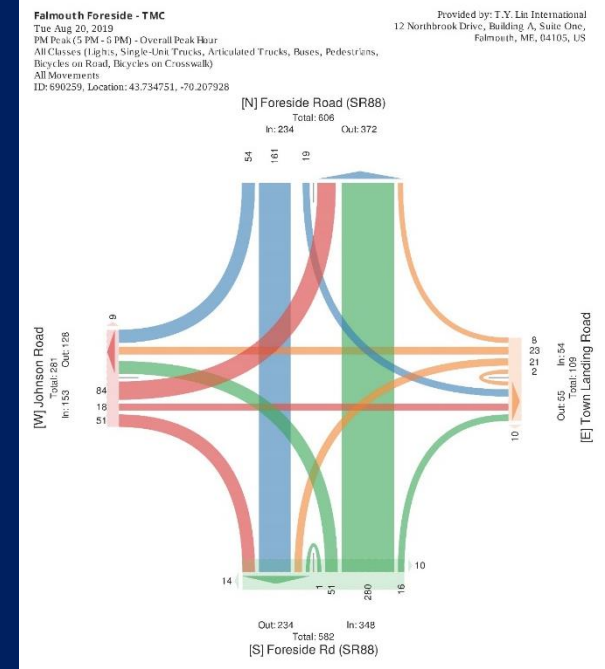
# Where do people come from and go?



8-9 AM

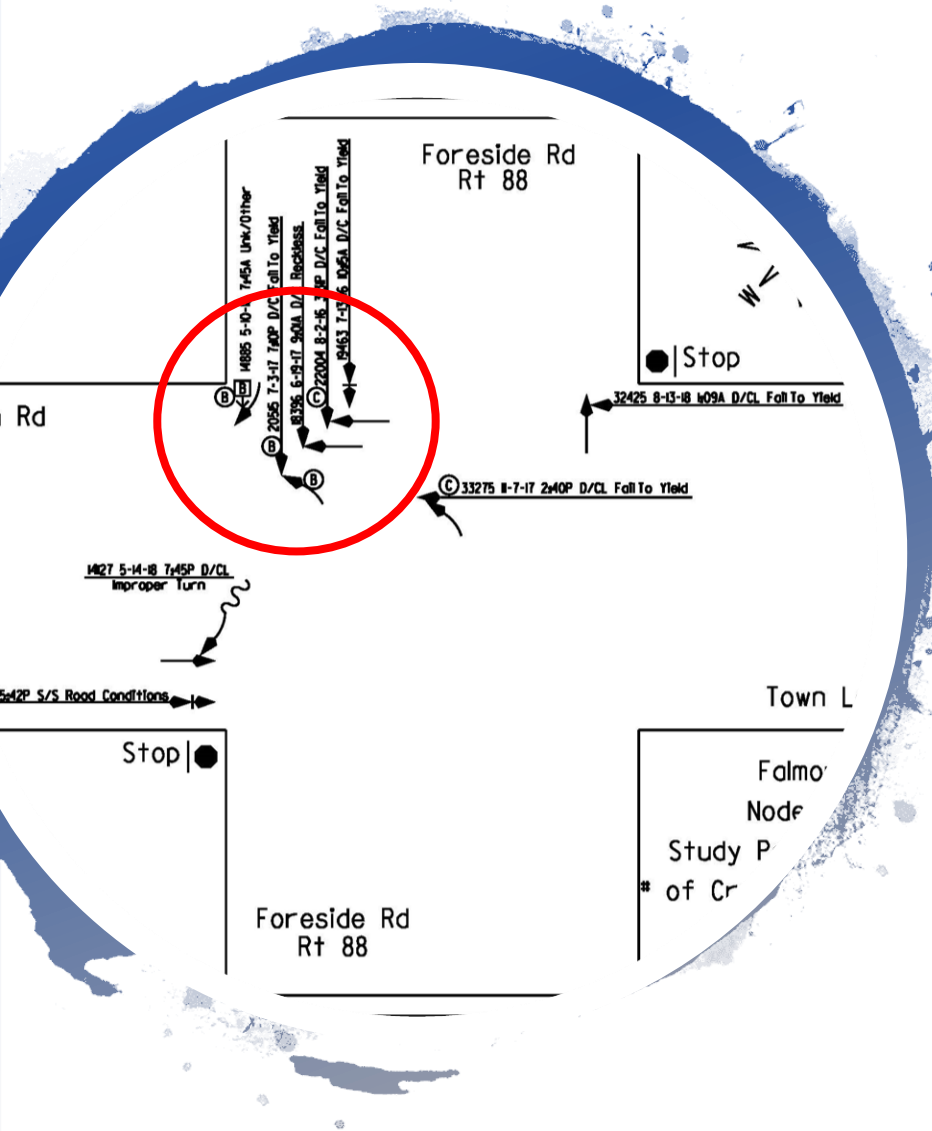


11:30 AM-12:30 PM



5-6 PM





# Crashes:

- 9 crashes between 2016-18 = “high crash location”
- Most involve vehicles coming from North

# Route 88/Depot Road

88

Foreside Rd

Depot Road

TYLIN INTERNATIONAL

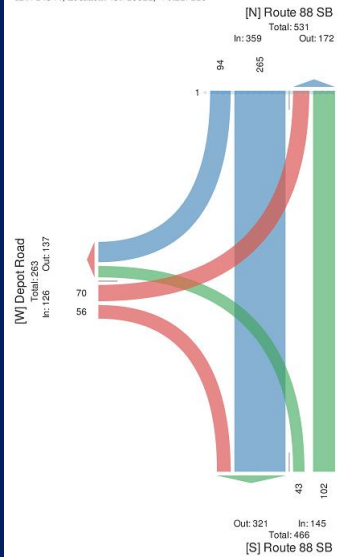




# Where do people come from and go?

**Falmouth Foreside (Depot Rd/Foreside Rd) - TMC**  
 Thu Nov 14, 2019  
 AM Peak (7:45 AM - 8:45 AM) - Overall Peak Hour  
 All Classes (Lights, Single-Unit Trucks, Articulated Trucks, Buses, Pedestrians,  
 Bicycles on Road, Bicycles on Crosswalk)  
 All Movements  
 ID: 724344, Location: 43.718821, -70.227128

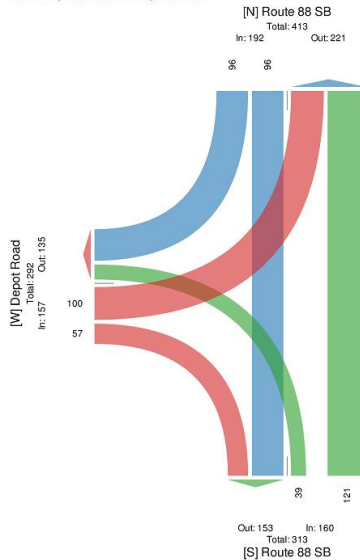
Provided by: T.Y. Lin International  
 12 Northbrook Drive, Building A, Suite One,  
 Falmouth, ME, 04105, US



7:45- 8:45 AM

**Falmouth Foreside (Depot Rd/Foreside Rd) - TMC**  
 Thu Nov 14, 2019  
 Midday Peak (12 PM - 1 PM)  
 All Classes (Lights, Single-Unit Trucks, Articulated Trucks, Buses, Pedestrians,  
 Bicycles on Road, Bicycles on Crosswalk)  
 All Movements  
 ID: 724344, Location: 43.718821, -70.227128

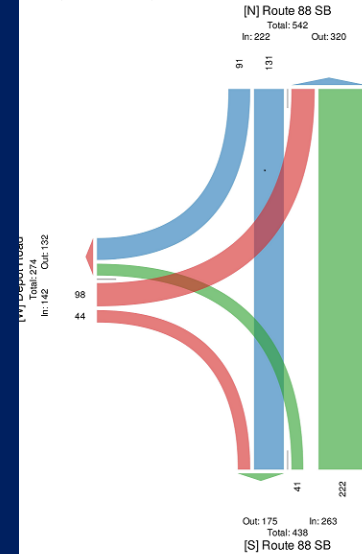
Provided by: T.Y. Lin International  
 12 Northbrook Drive, Building A, Suite One,  
 Falmouth, ME, 04105, US



12:00-1:00 PM

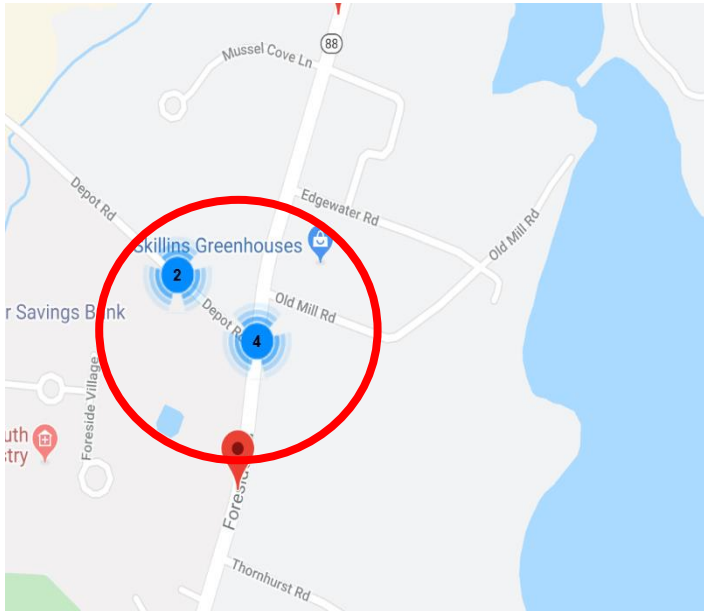
**Falmouth Foreside (Depot Rd/Foreside Rd) - TMC**  
 Thu Nov 14, 2019  
 PM Peak (4:30 PM - 5:30 PM)  
 All Classes (Lights, Single-Unit Trucks, Articulated Trucks, Buses, Pedestrians,  
 Bicycles on Road, Bicycles on Crosswalk)  
 All Movements  
 ID: 724344, Location: 43.718821, -70.227128

Provided by: T.Y. Lin International  
 12 Northbrook Drive, Building A, Suite One,  
 Falmouth, ME, 04105, US



4:30-5:30 PM





# Crashes:

- 4 crashes between 2016-18
- Not a “high crash location”

# Speed on Route 88

- Speed survey performed by Falmouth PD last week of September 2019
- Location: near 245 Foreside Road
- 3,455 vehicles sampled in the northbound direction only
- 85% of vehicles traveling at or below 35 MPH (= Posted Speed Limit)
- Some vehicles exceeded 40 MPH





# Public Input – Task 1

What needs to be **improved** at Johnson Road intersection? **What are your concerns?**  
Do same for Depot Road intersection.

1. Introduce yourself in your group
2. Take turns listing concerns on big sheet(s)
3. No need to agree on any suggestion – all concerns are valid
4. When done with both intersections, each person gets **6 dots** to place next to their top concerns on any of your group's sheets
5. You can place all on specific Johnson Road concerns or spread dots around
6. Bullet voting on a single item is OK

# Public Input – Task 2

Rate each idea on **Menu of Possible Improvements** for Johnson Road intersection on scale of 1-5.

We'll do same for Depot Road intersection.

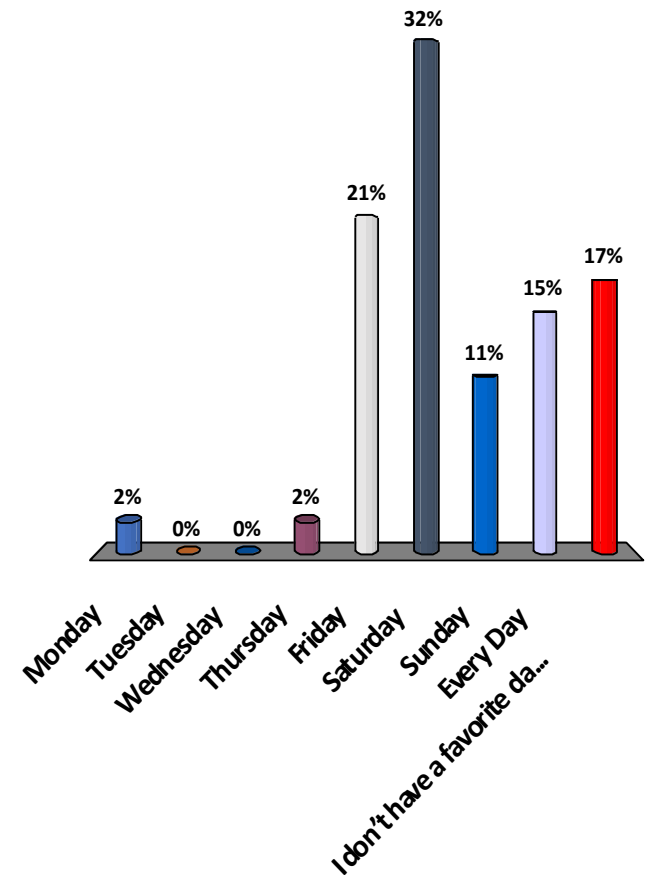
- 1 = I love this idea!
- 2 = I like this idea
- 3 = I don't know or have an opinion about it
- 4 = I do not like this idea
- 5 = I do not like this idea at all!





# Test question: Which is your favorite day of the week?

1. Monday
2. Tuesday
3. Wednesday
4. Thursday
5. Friday
6. Saturday
7. Sunday
8. Every Day
9. I don't have a favorite day of the week



If you pressed in error, simply press again!

# Johnson Road/Town Landing Road intersection



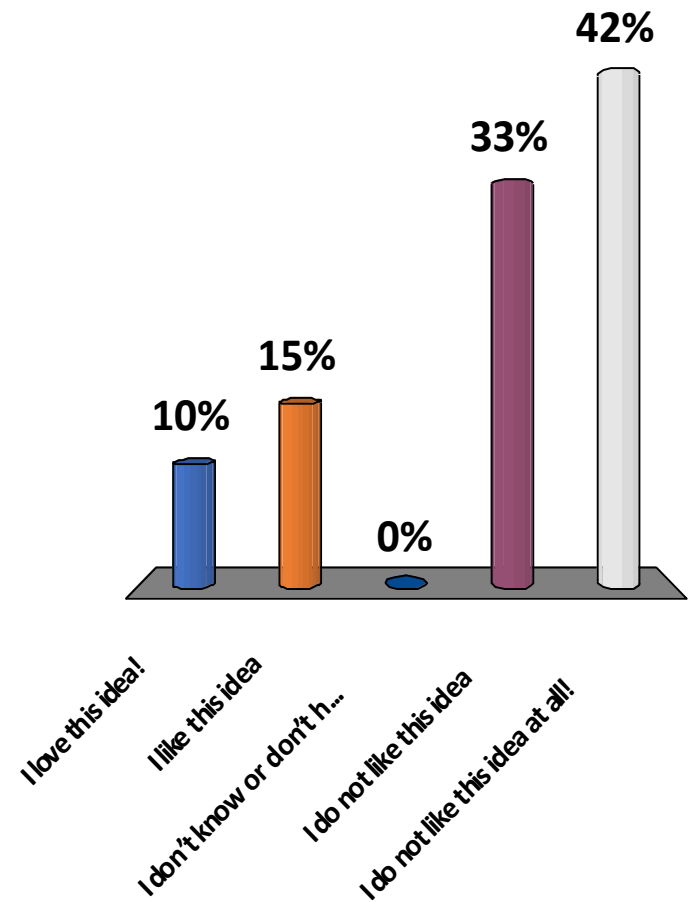


# Add Traffic Light



# Add Traffic Light?

1. I love this idea!
2. I like this idea
3. I don't know or don't have an opinion
4. I do not like this idea
5. I do not like this idea at all!



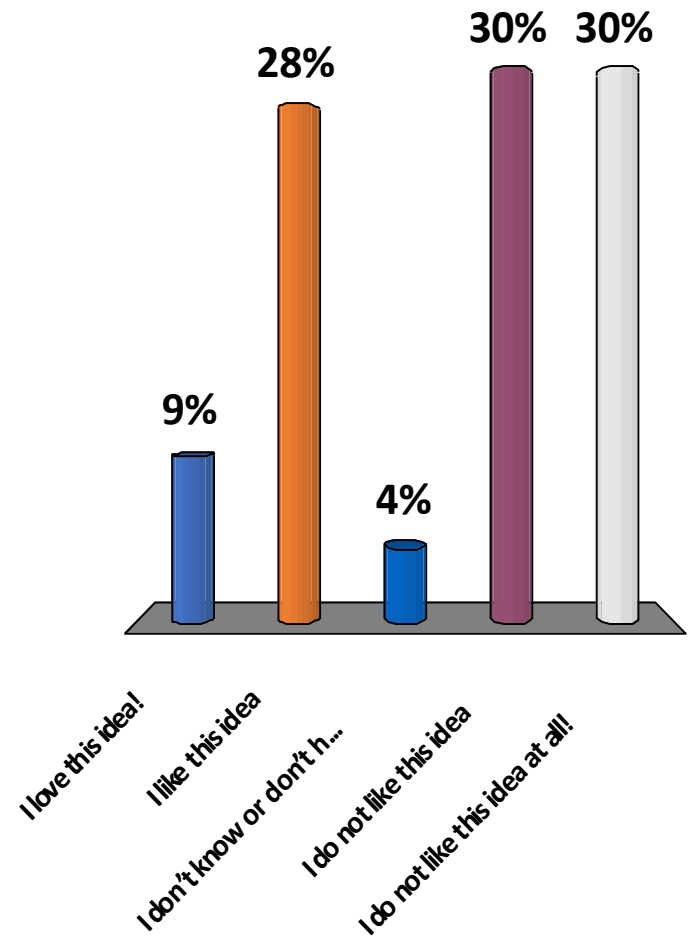


# Add Yellow Blinking Light



# Add Yellow Blinking Light?

1. I love this idea!
2. I like this idea
3. I don't know or don't have an opinion
4. I do not like this idea
5. I do not like this idea at all!



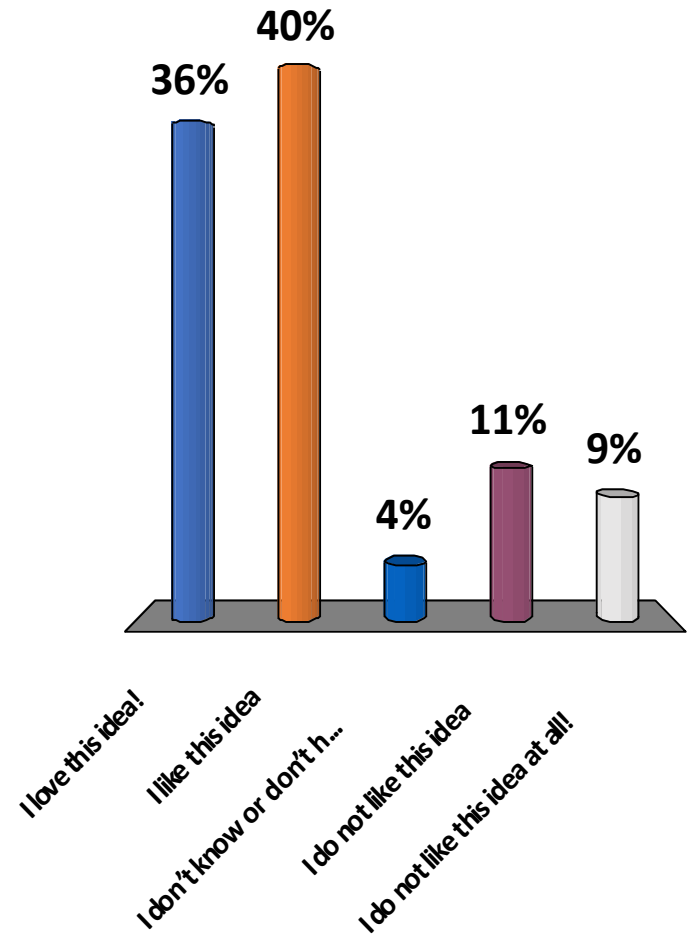


# Reduce Speed Limit to 25 mph



# Reduce Speed Limit to 25 mph?

1. I love this idea!
2. I like this idea
3. I don't know or don't have an opinion
4. I do not like this idea
5. I do not like this idea at all!



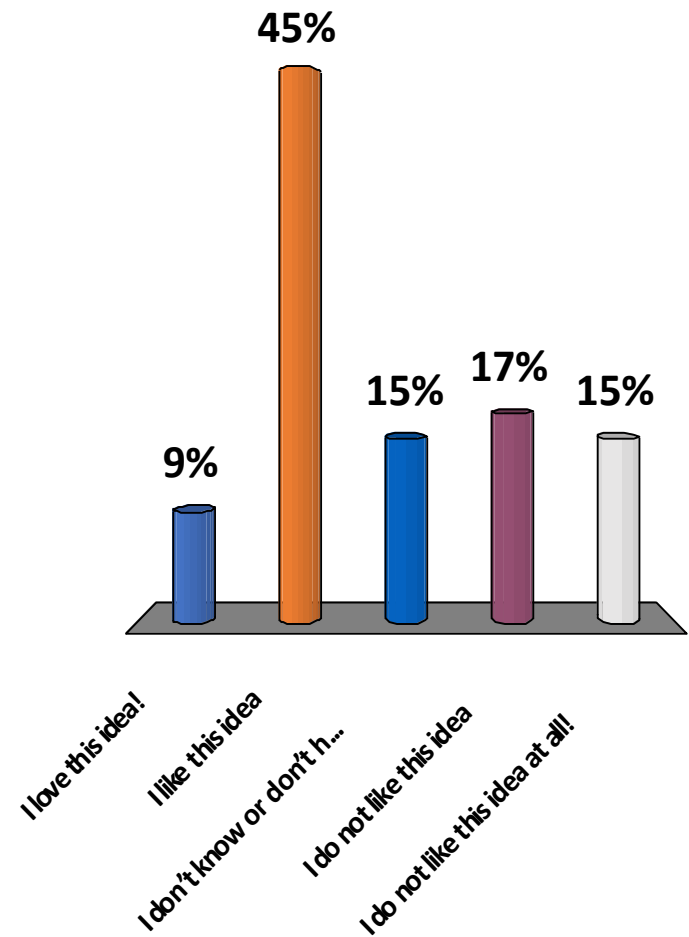


# Install permanent radar speed sign



# Install permanent radar speed sign?

1. I love this idea!
2. I like this idea
3. I don't know or don't have an opinion
4. I do not like this idea
5. I do not like this idea at all!





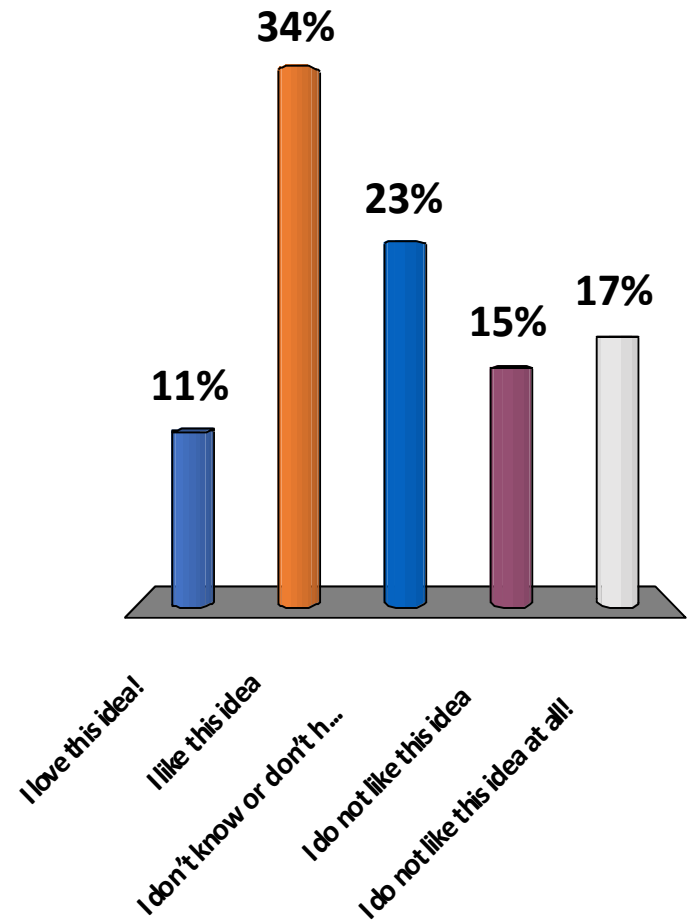
# Increase Speed Enforcement



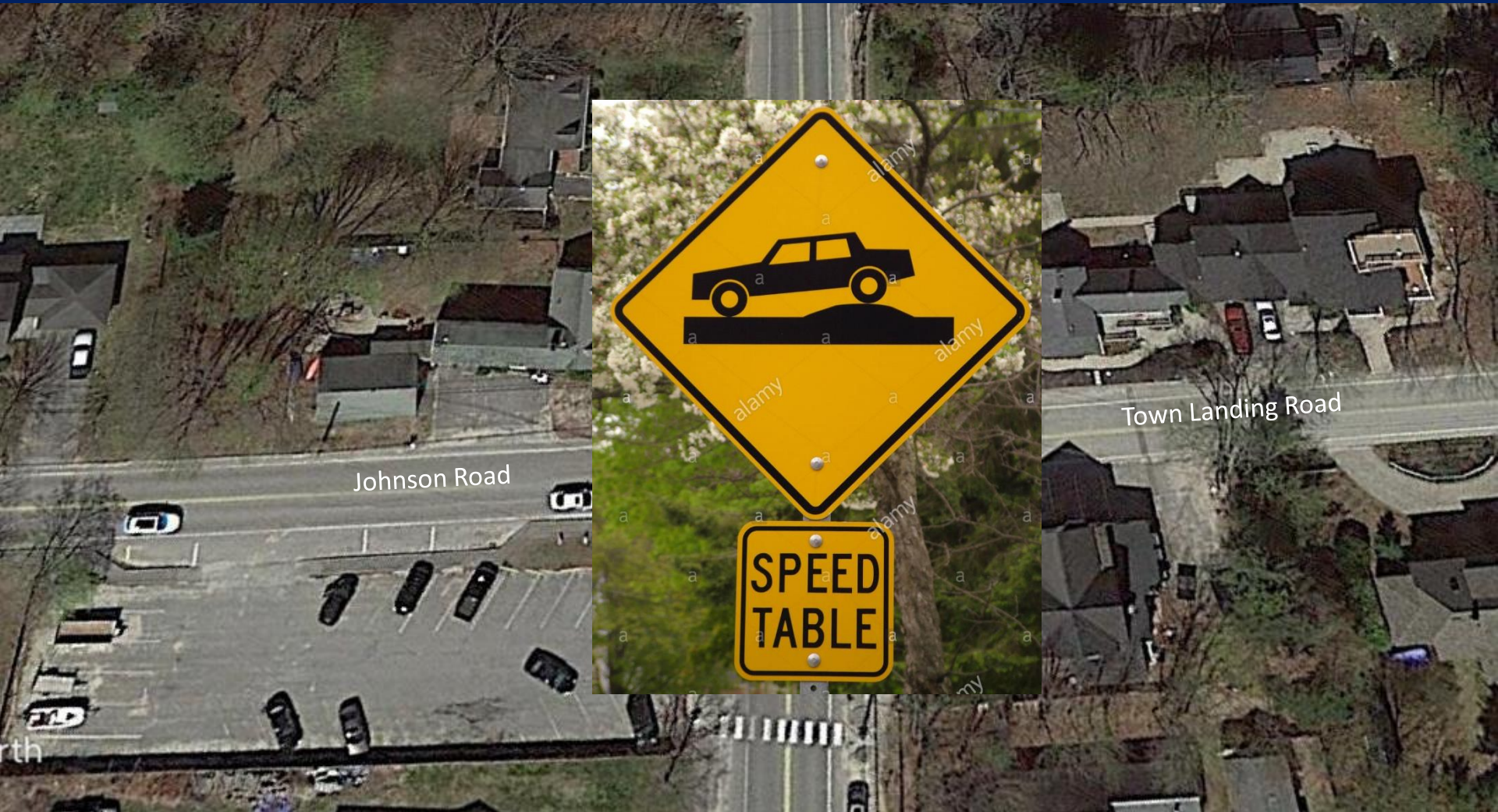


# Increase Speed Enforcement ?

1. I love this idea!
2. I like this idea
3. I don't know or don't have an opinion
4. I do not like this idea
5. I do not like this idea at all!

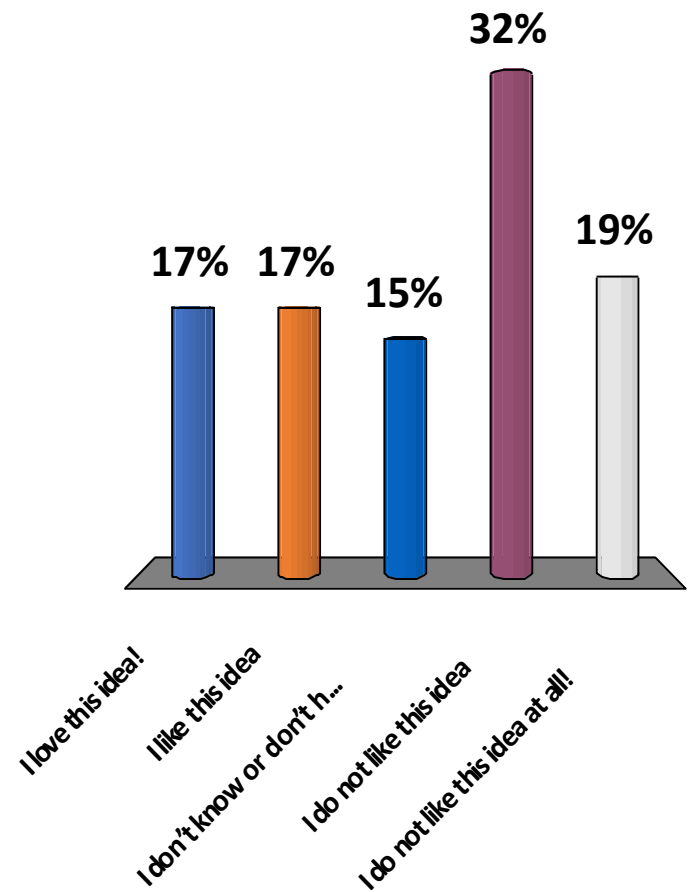


# Install Speed Tables



# Install Speed Tables?

1. I love this idea!
2. I like this idea
3. I don't know or don't have an opinion
4. I do not like this idea
5. I do not like this idea at all!



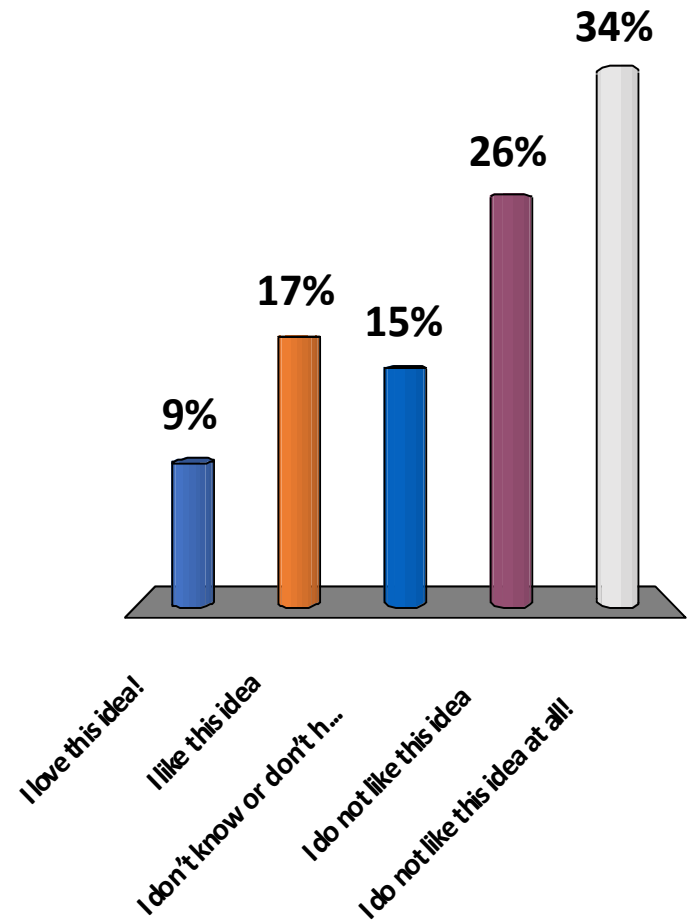


# Add “Cross traffic does not stop” signs



# Add “Cross traffic does not stop” signs?

1. I love this idea!
2. I like this idea
3. I don't know or don't have an opinion
4. I do not like this idea
5. I do not like this idea at all!





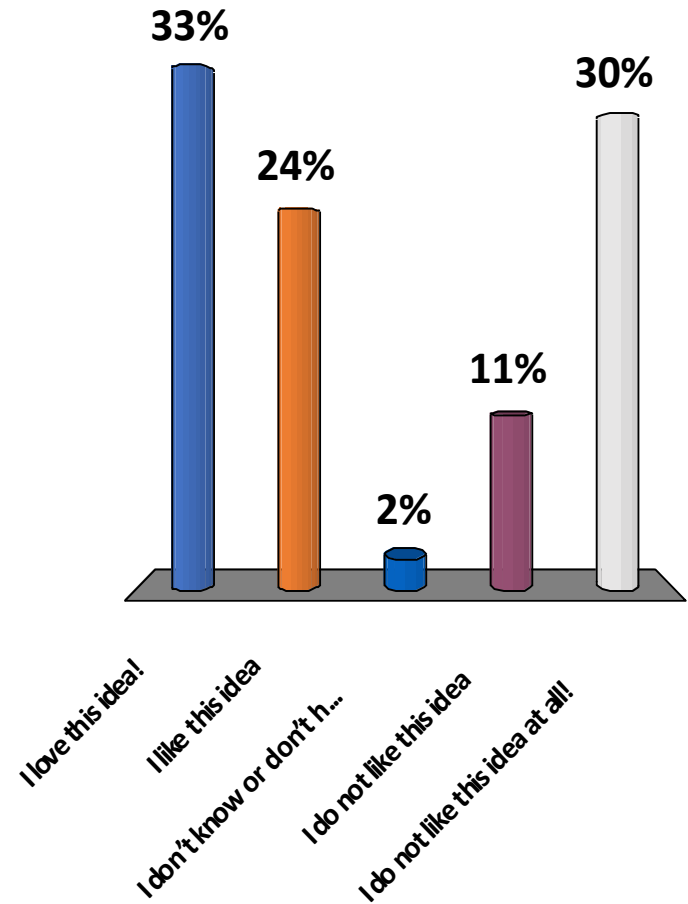
# Add 4-way stop signs





# Add 4-way stop signs?

1. I love this idea!
2. I like this idea
3. I don't know or don't have an opinion
4. I do not like this idea
5. I do not like this idea at all!

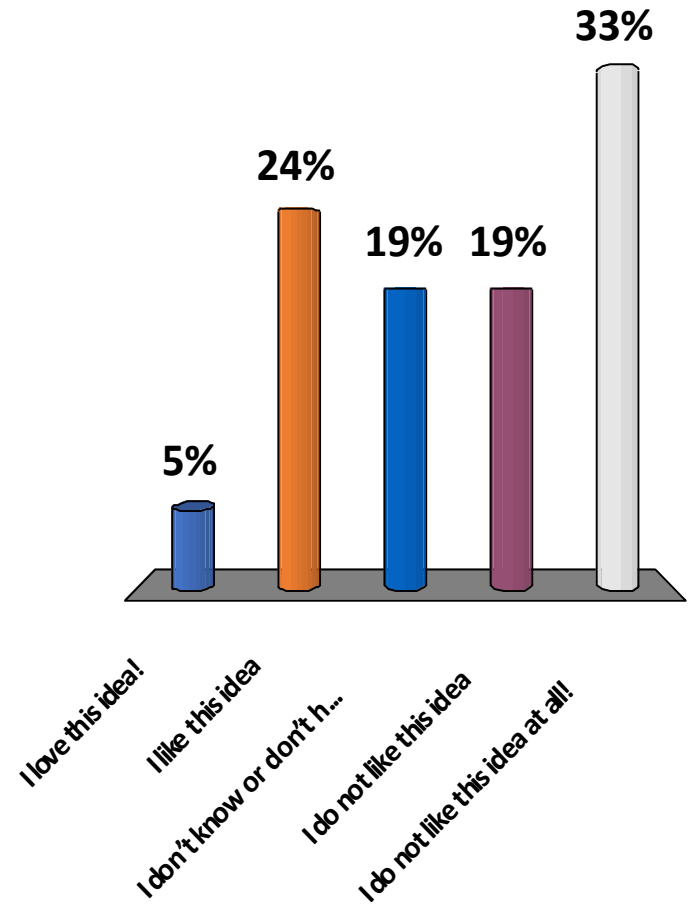


# Add “Dangerous Intersection” Sign on Route 88 approaches



# Add “Dangerous Intersection” Sign on Route 88 approaches?

1. I love this idea!
2. I like this idea
3. I don't know or don't have an opinion
4. I do not like this idea
5. I do not like this idea at all!



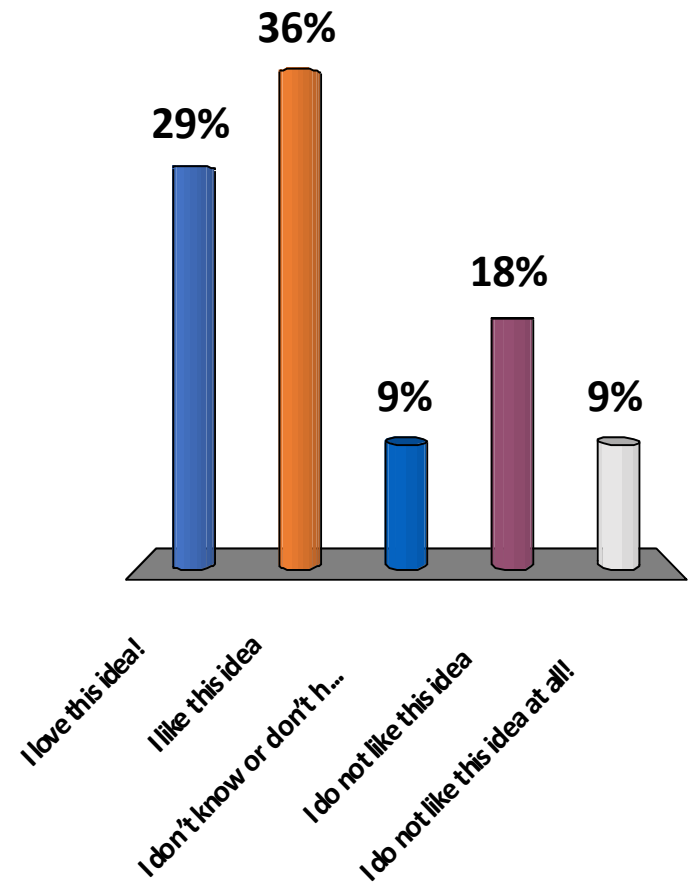


# Add “pedestrian crossing” warning signs



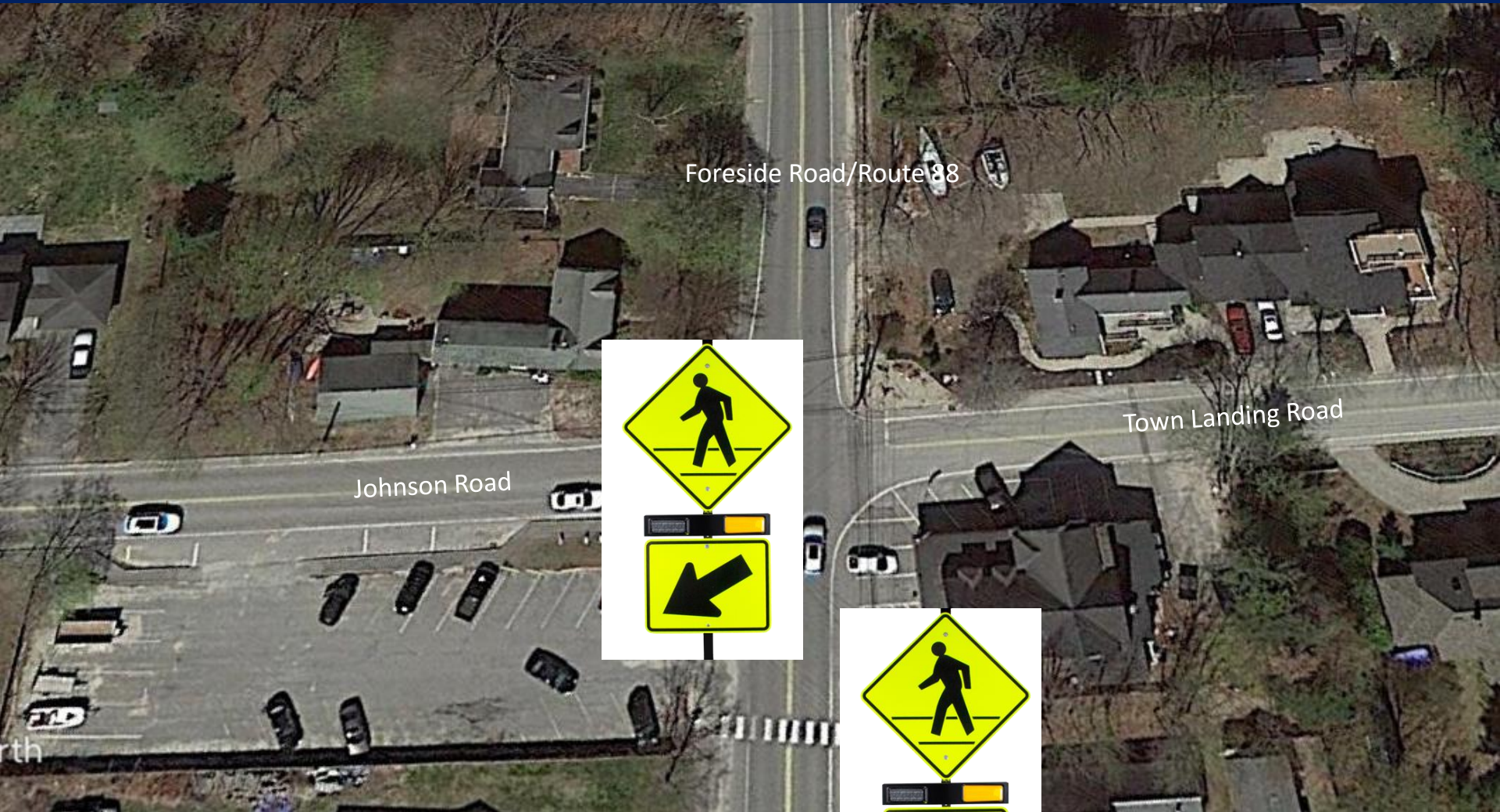
# Add “pedestrian crossing” warning signs?

1. I love this idea!
2. I like this idea
3. I don't know or don't have an opinion
4. I do not like this idea
5. I do not like this idea at all!





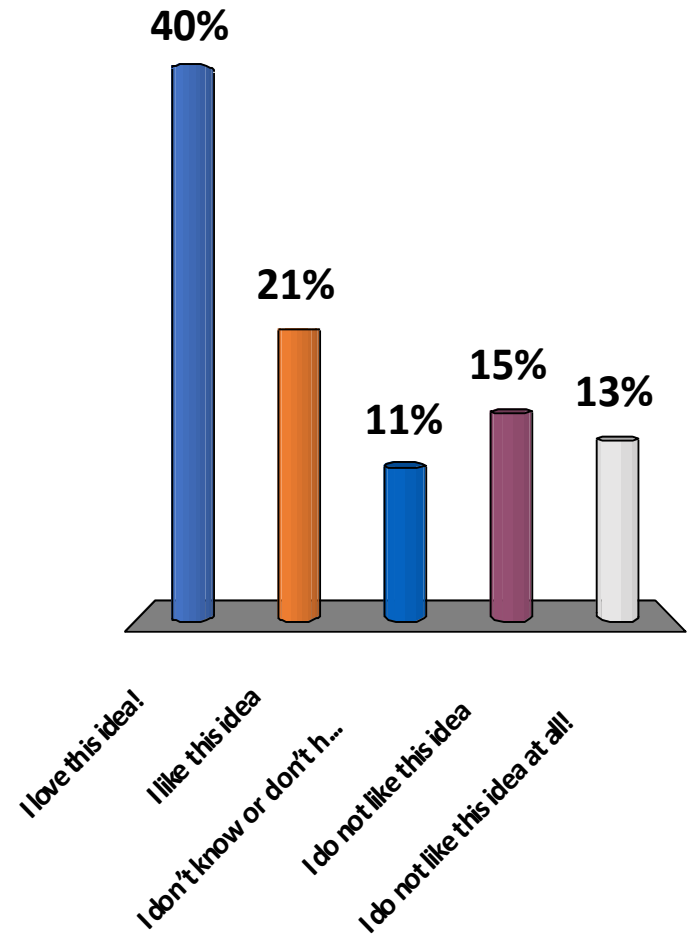
# Install push-button flashing beacon at crosswalk





# Install push-button flashing beacon at crosswalk ?

1. I love this idea!
2. I like this idea
3. I don't know or don't have an opinion
4. I do not like this idea
5. I do not like this idea at all!

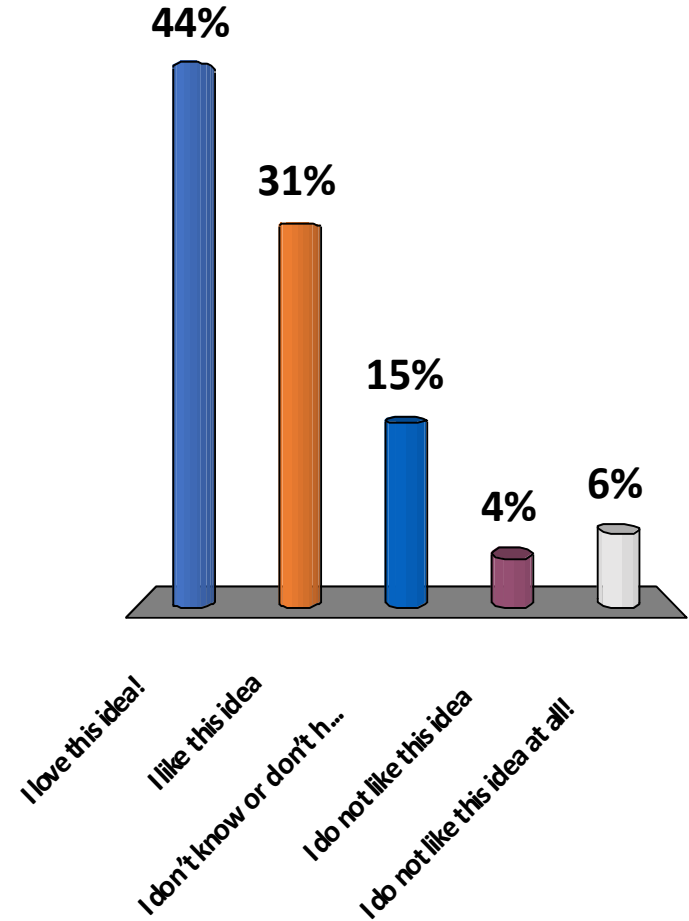


# Add second crosswalk on Rt 88, north of intersection



# Add second crosswalk on Rt 88, north of intersection?

1. I love this idea!
2. I like this idea
3. I don't know or don't have an opinion
4. I do not like this idea
5. I do not like this idea at all!



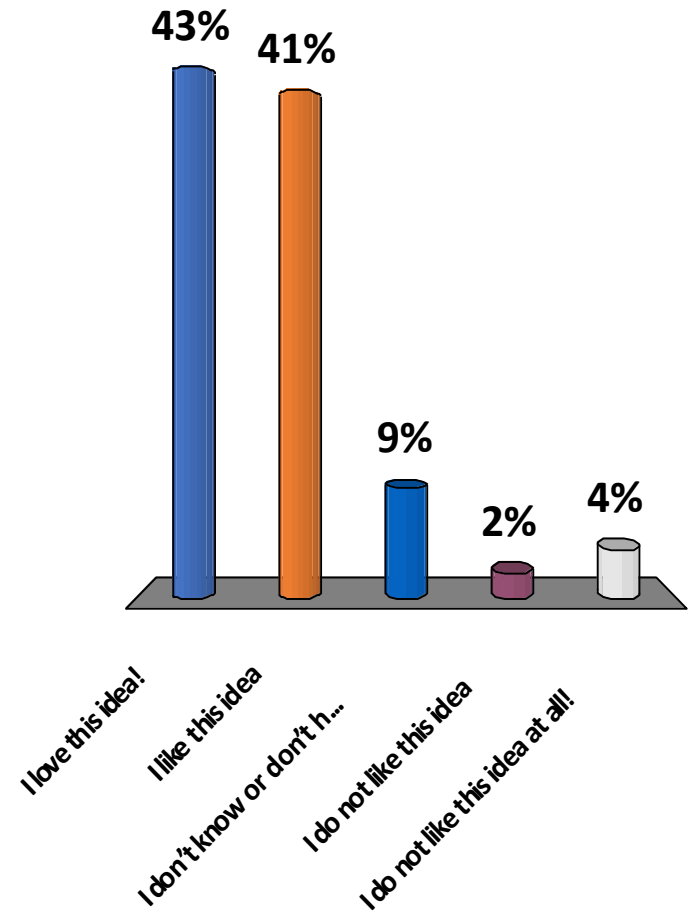


# Add crosswalks on Johnson and Town Landing Roads



# Add crosswalks on Johnson and Town Landing Roads?

1. I love this idea!
2. I like this idea
3. I don't know or don't have an opinion
4. I do not like this idea
5. I do not like this idea at all!



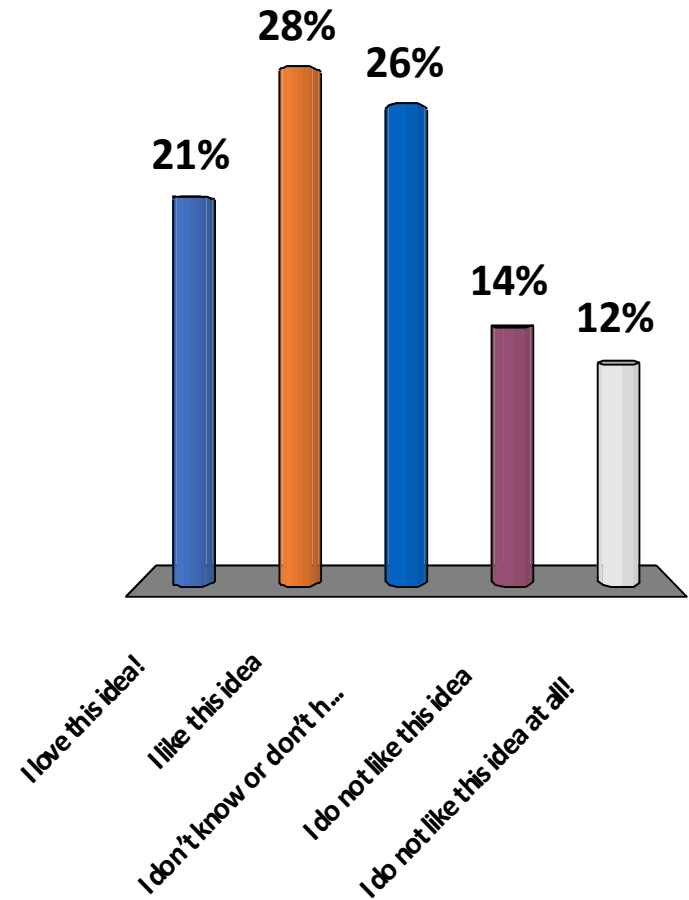


# Move existing crosswalk on Route 88 to intersection



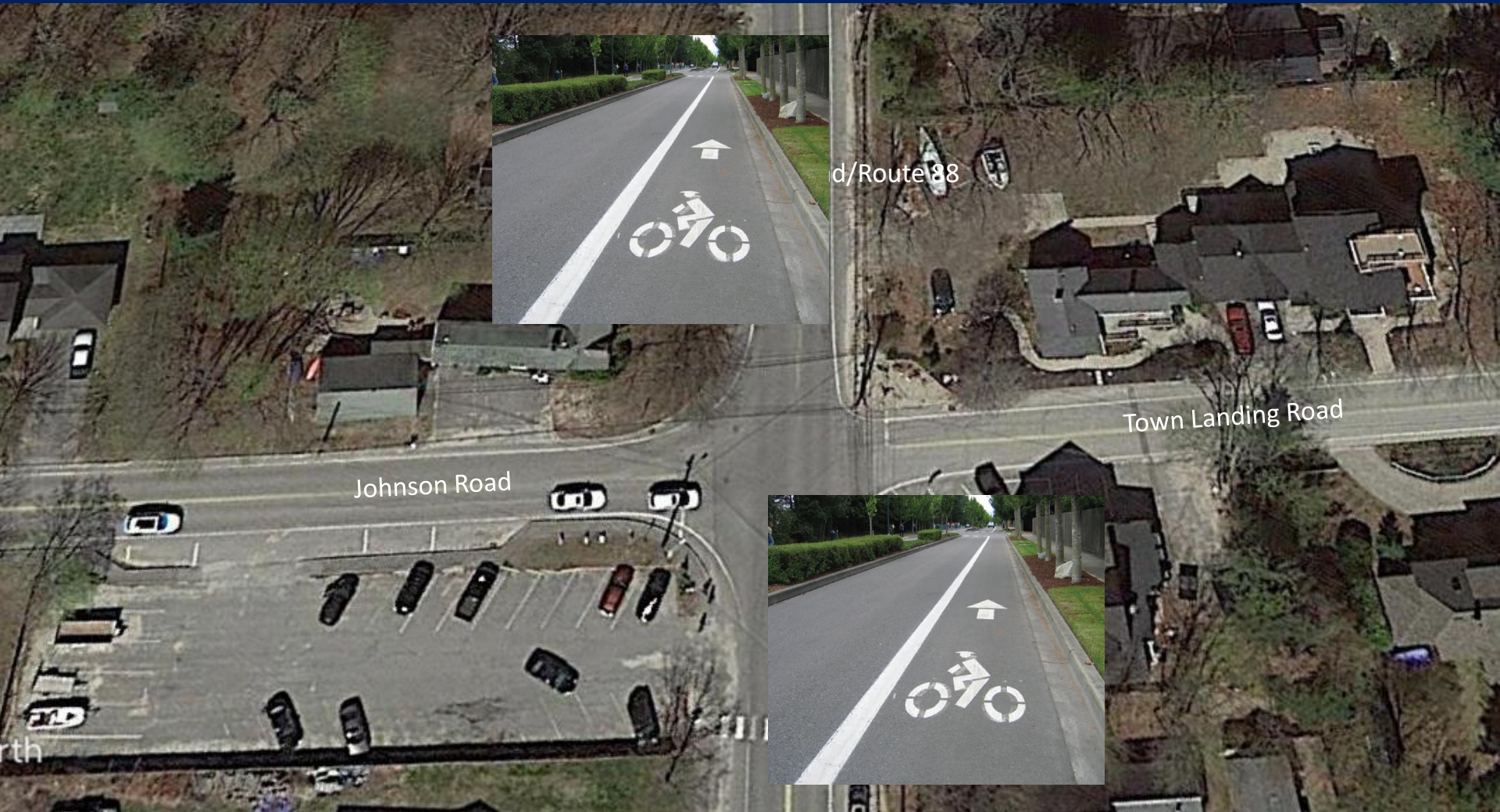
# Move existing crosswalk on Route 88 to intersection?

1. I love this idea!
2. I like this idea
3. I don't know or don't have an opinion
4. I do not like this idea
5. I do not like this idea at all!





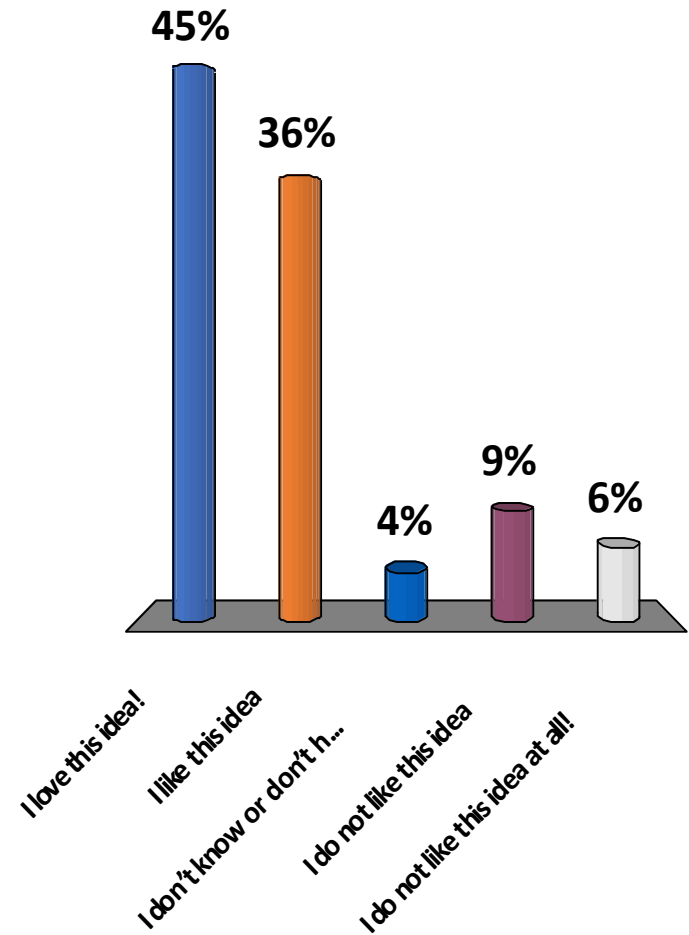
# Add striped, signed bike lanes on Rt 88



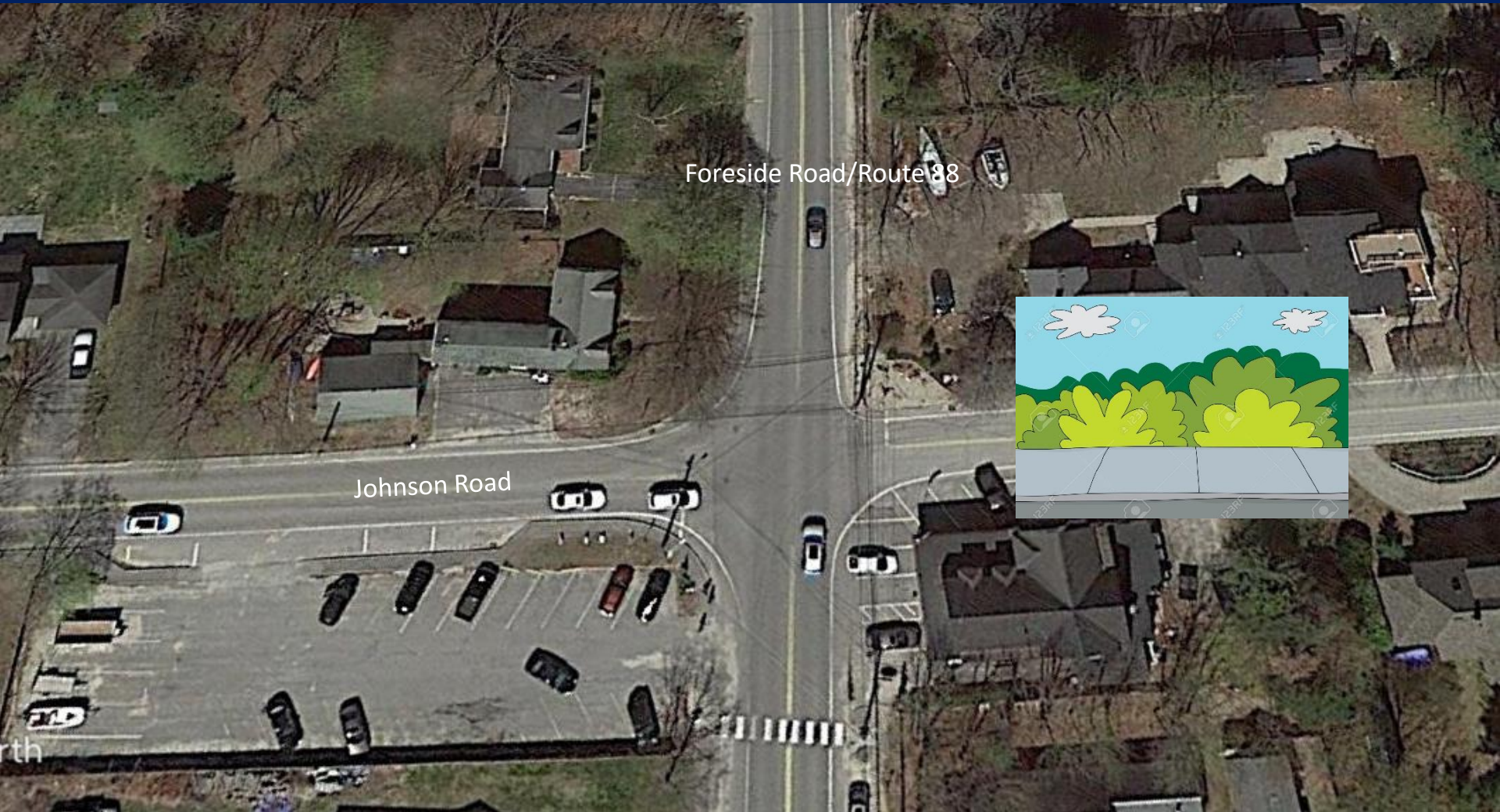


# Add striped, signed bike lanes on Rt 88?

1. I love this idea!
2. I like this idea
3. I don't know or don't have an opinion
4. I do not like this idea
5. I do not like this idea at all!

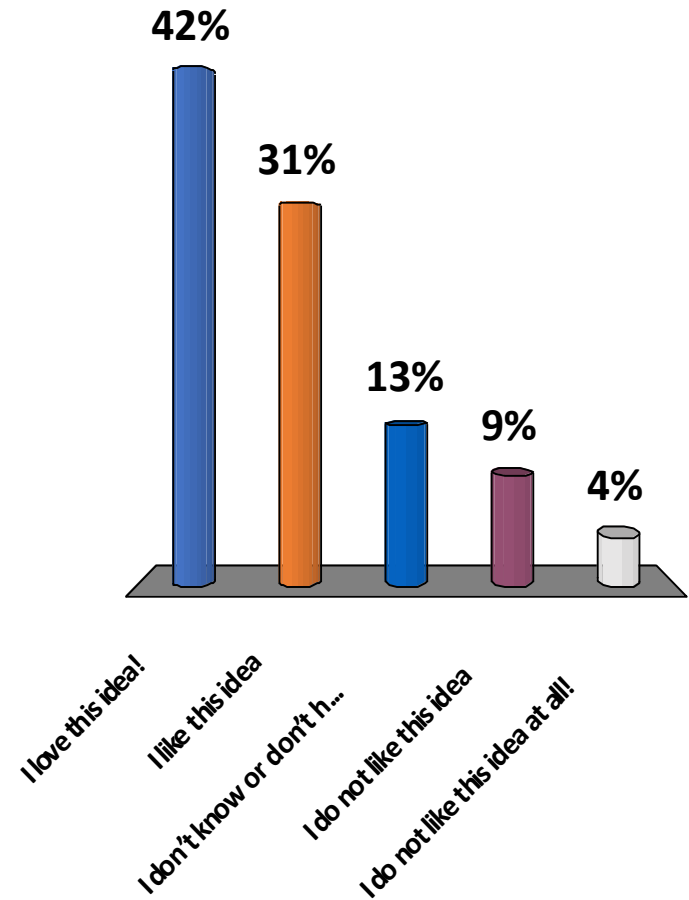


# Add sidewalk on Town Landing Road



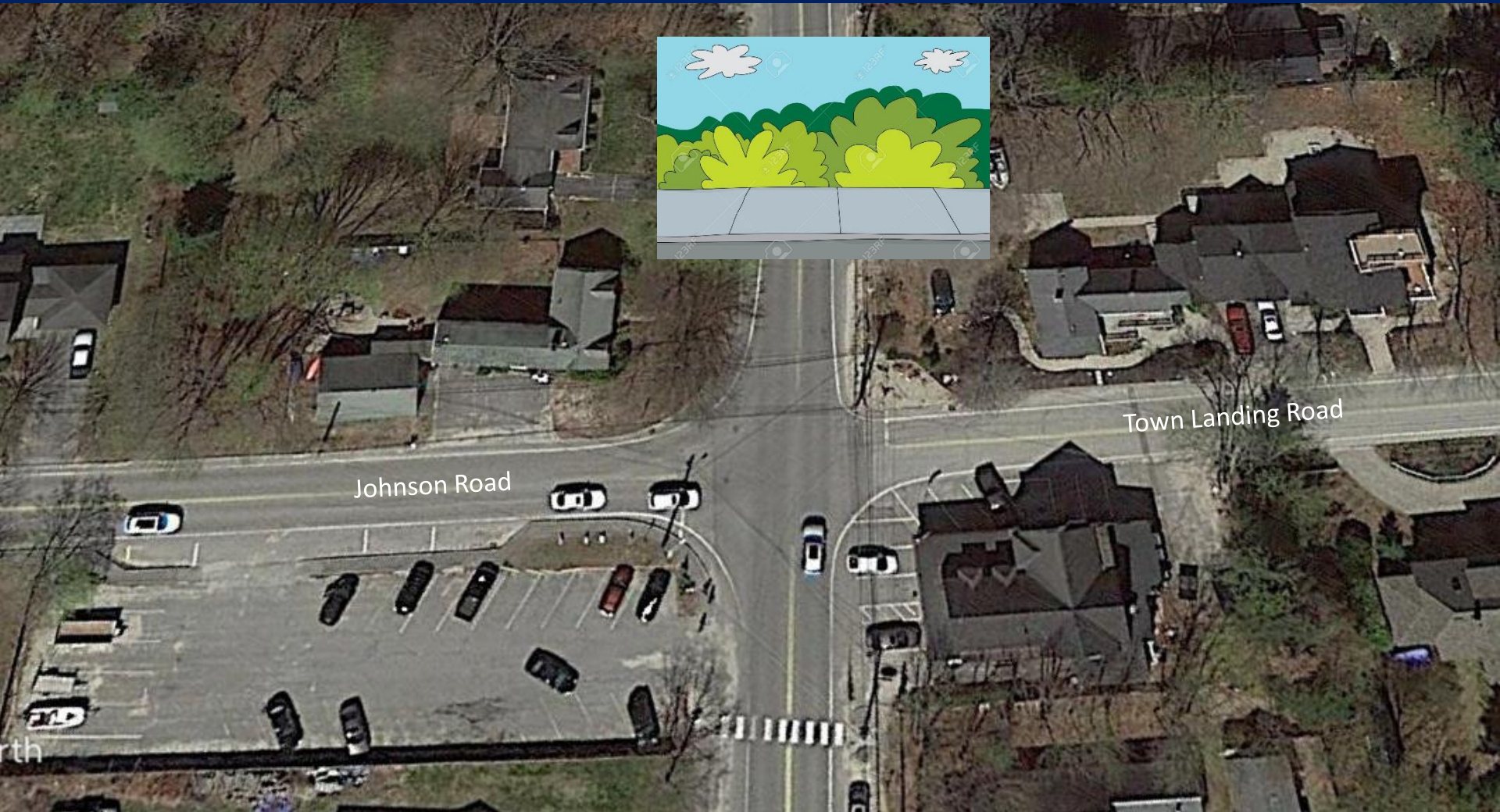
# Add sidewalk on Town Landing Road?

1. I love this idea!
2. I like this idea
3. I don't know or don't have an opinion
4. I do not like this idea
5. I do not like this idea at all!



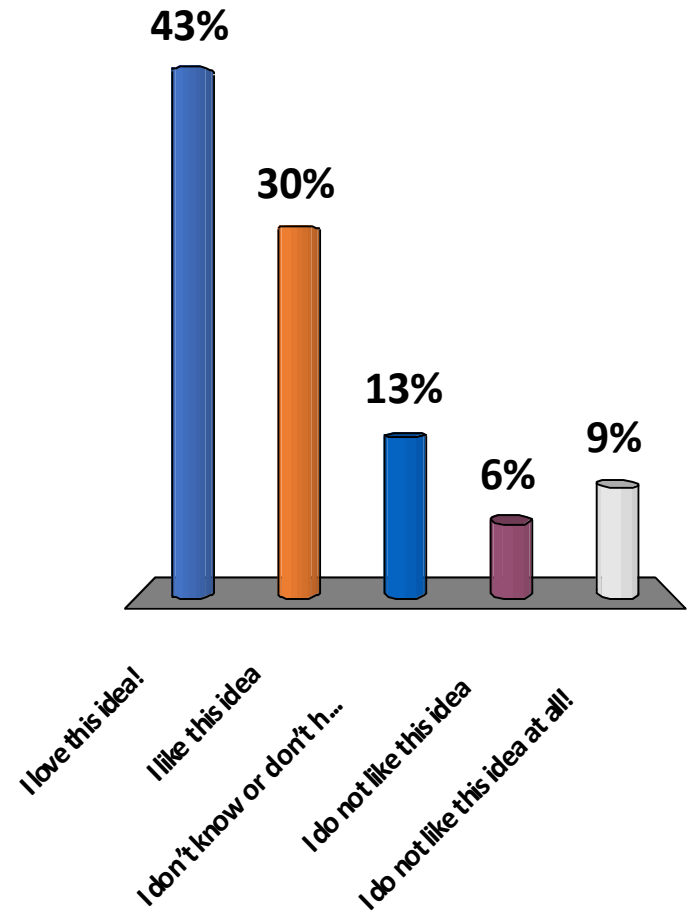


# Add sidewalk on Rt 88, north of Johnson Road



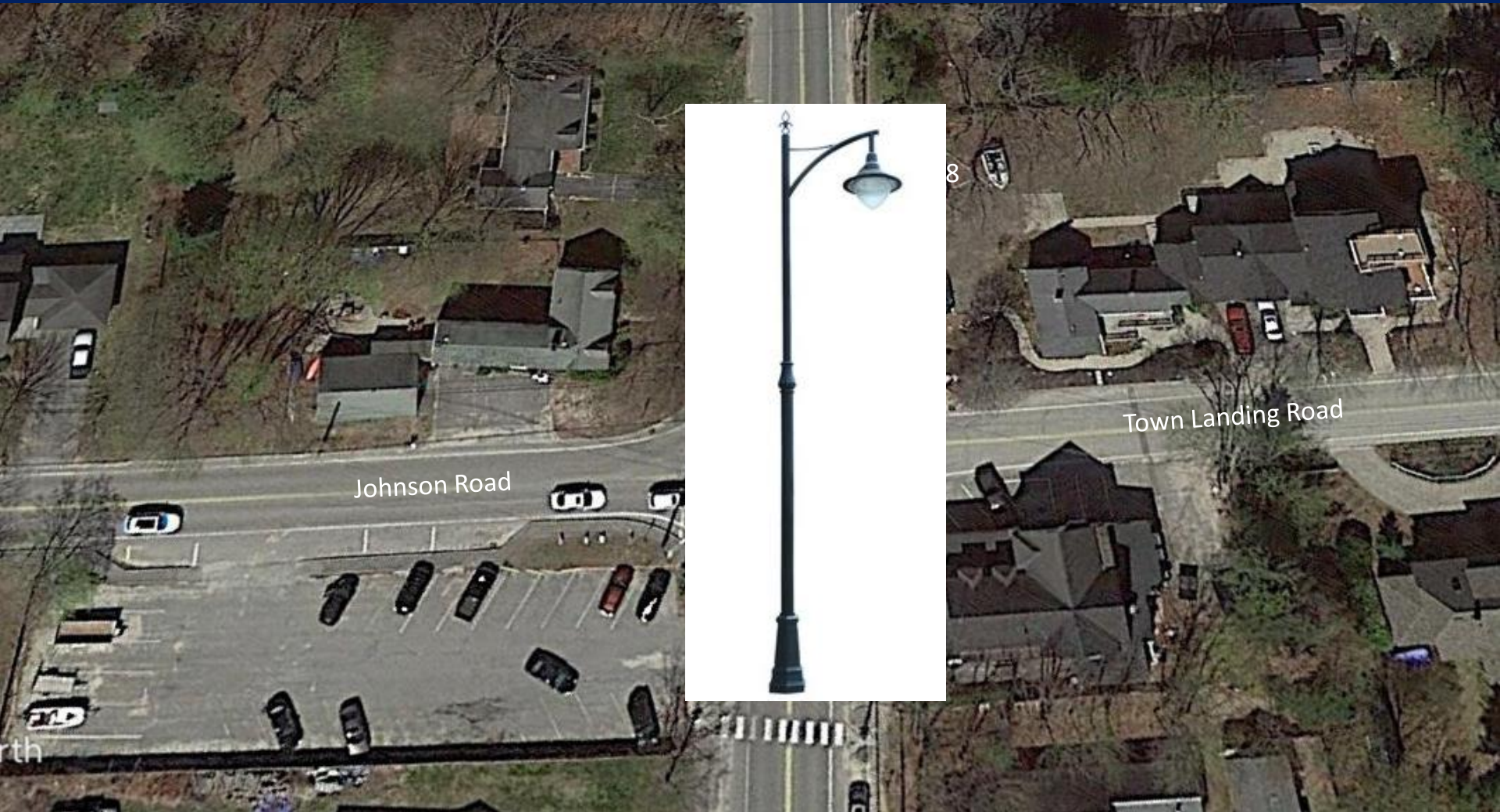
# Add sidewalk on Rt 88, north of Johnson Road?

1. I love this idea!
2. I like this idea
3. I don't know or don't have an opinion
4. I do not like this idea
5. I do not like this idea at all!



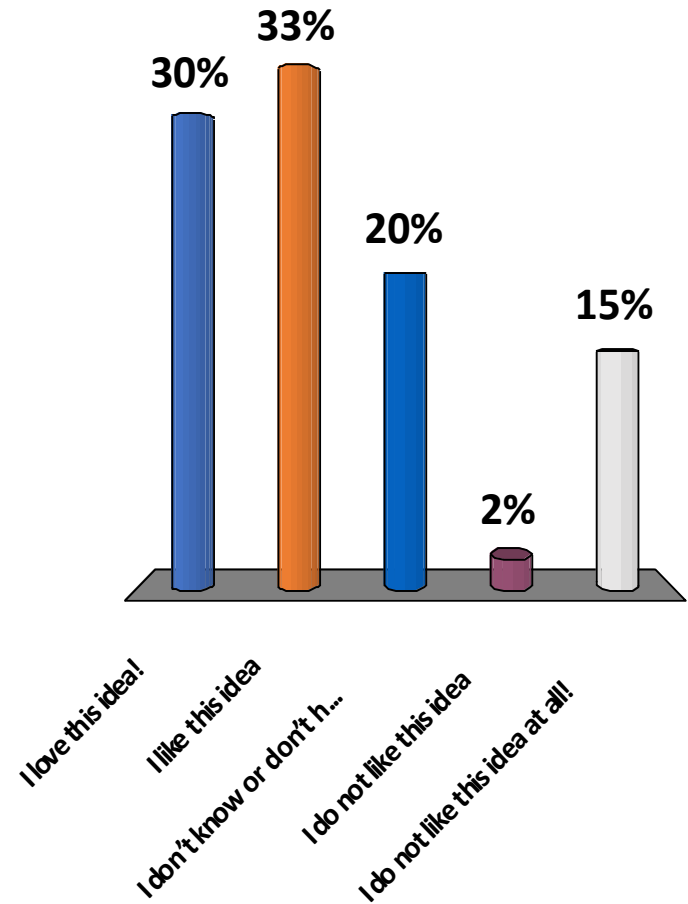


# Add additional streetlights at intersection



# Add additional streetlights at intersection?

1. I love this idea!
2. I like this idea
3. I don't know or don't have an opinion
4. I do not like this idea
5. I do not like this idea at all!



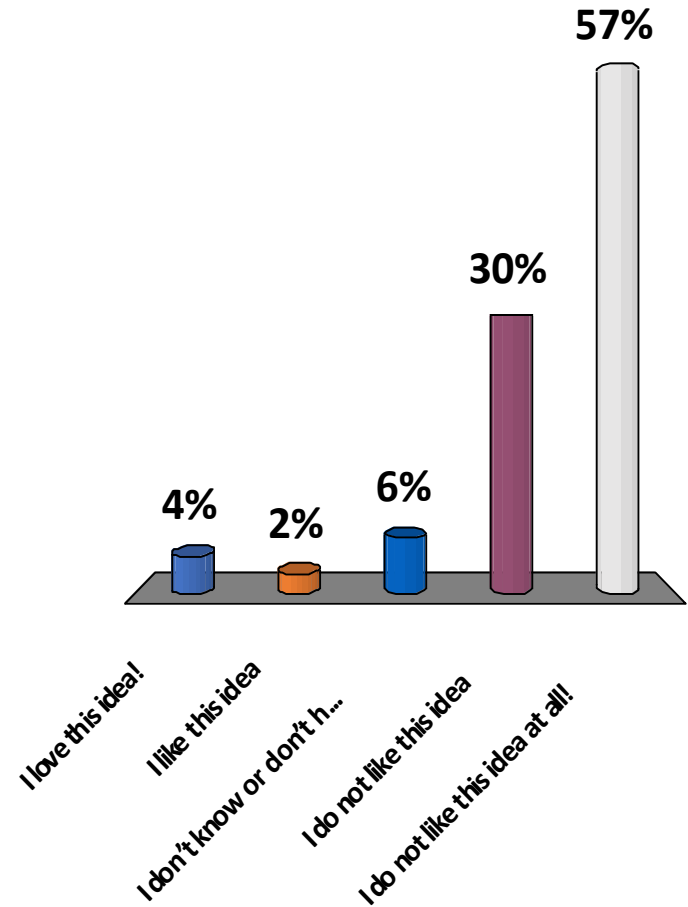


Add “road narrows” signs near intersection, and narrow travel lanes by installing plastic bollards



# Add “road narrows” signs near intersection, and narrow travel lanes by installing plastic bollards?

1. I love this idea!
2. I like this idea
3. I don't know or don't have an opinion
4. I do not like this idea
5. I do not like this idea at all!



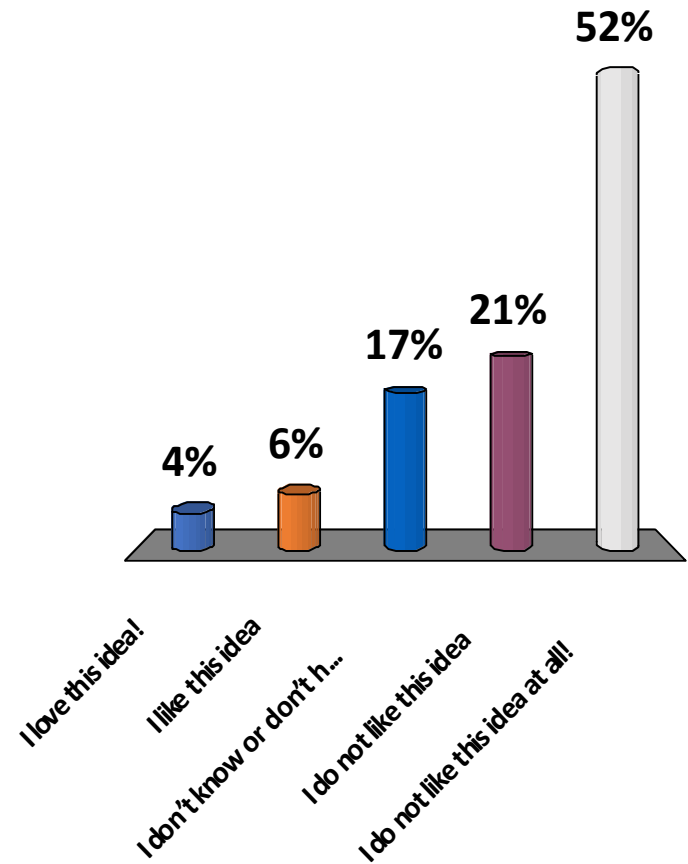


# Narrow travel lanes on Rt 88 with flexible bollards in middle of the road on approach of intersection



# Narrow travel lanes on Rt 88 with flexible bollards in middle of the road on approach of intersection?

1. I love this idea!
2. I like this idea
3. I don't know or don't have an opinion
4. I do not like this idea
5. I do not like this idea at all!



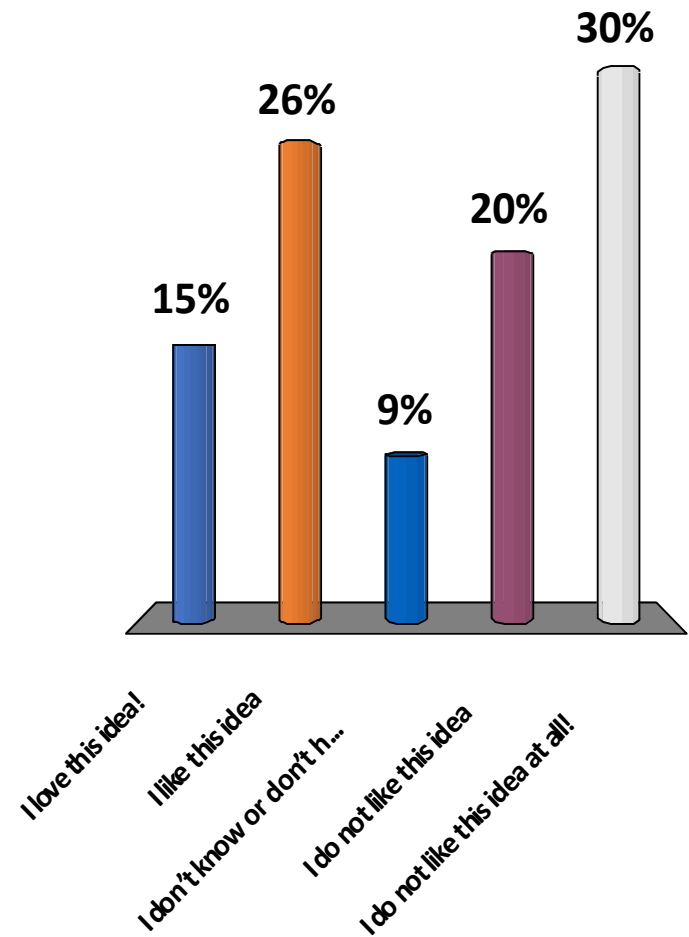


# Install median island(s) on Route 88 on approach of intersection



# Install median island(s) on Route 88 on approach of intersection ?

1. I love this idea!
2. I like this idea
3. I don't know or don't have an opinion
4. I do not like this idea
5. I do not like this idea at all!





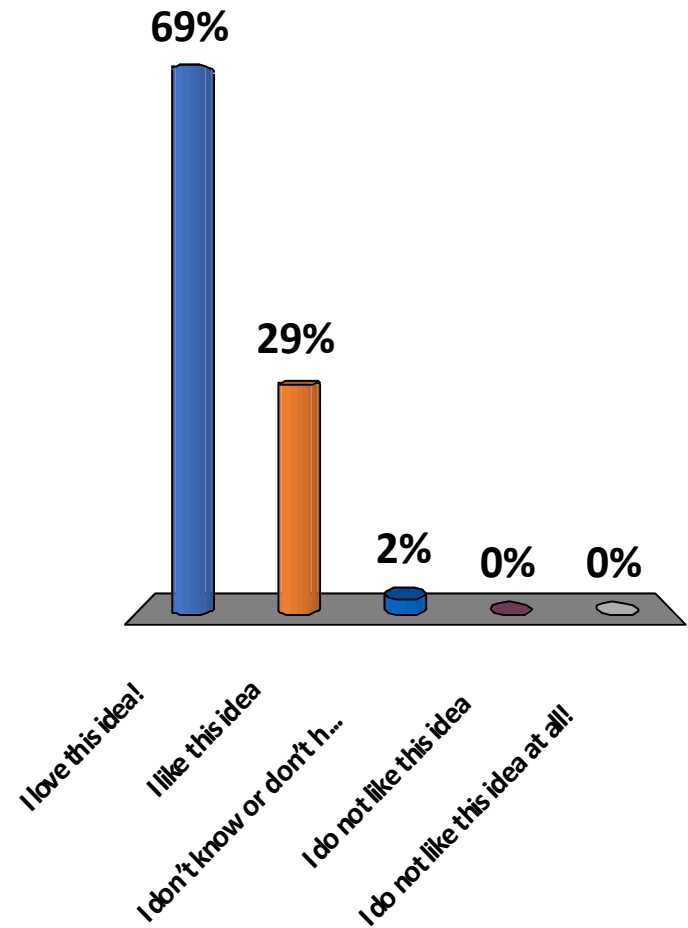
# Improve sight distance to north on Route 88

- Prune vegetation
- Remove old utility pole
- Relocate signs



# Improve sight distance to north on Route 88?

1. I love this idea!
2. I like this idea
3. I don't know or don't have an opinion
4. I do not like this idea
5. I do not like this idea at all!



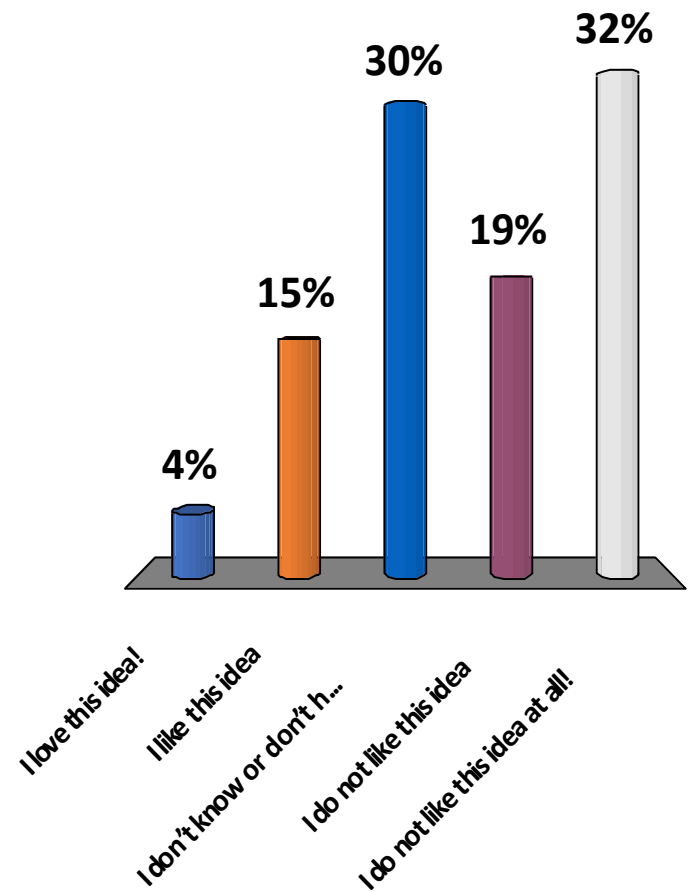


# Realign Johnson Road approach



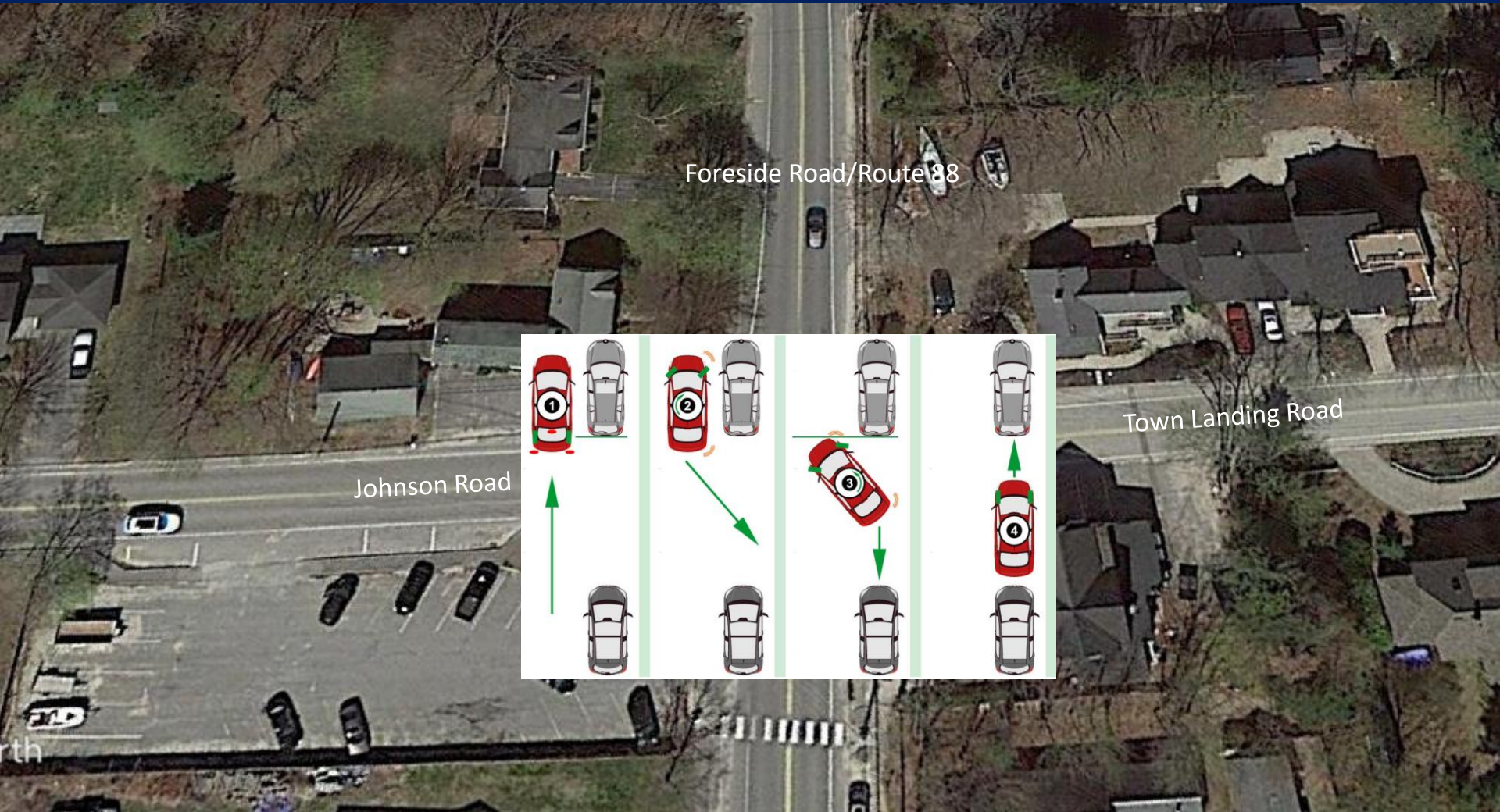
# Realign Johnson Road approach?

1. I love this idea!
2. I like this idea
3. I don't know or don't have an opinion
4. I do not like this idea
5. I do not like this idea at all!



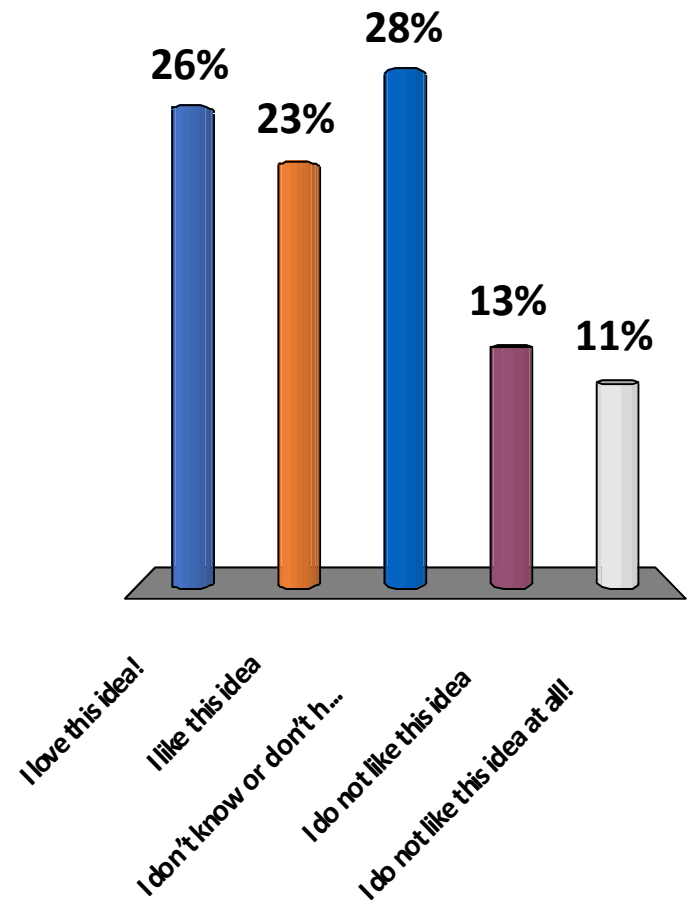


# Create parallel parking at Town Landing Market + reserve 15-minute spaces across the street



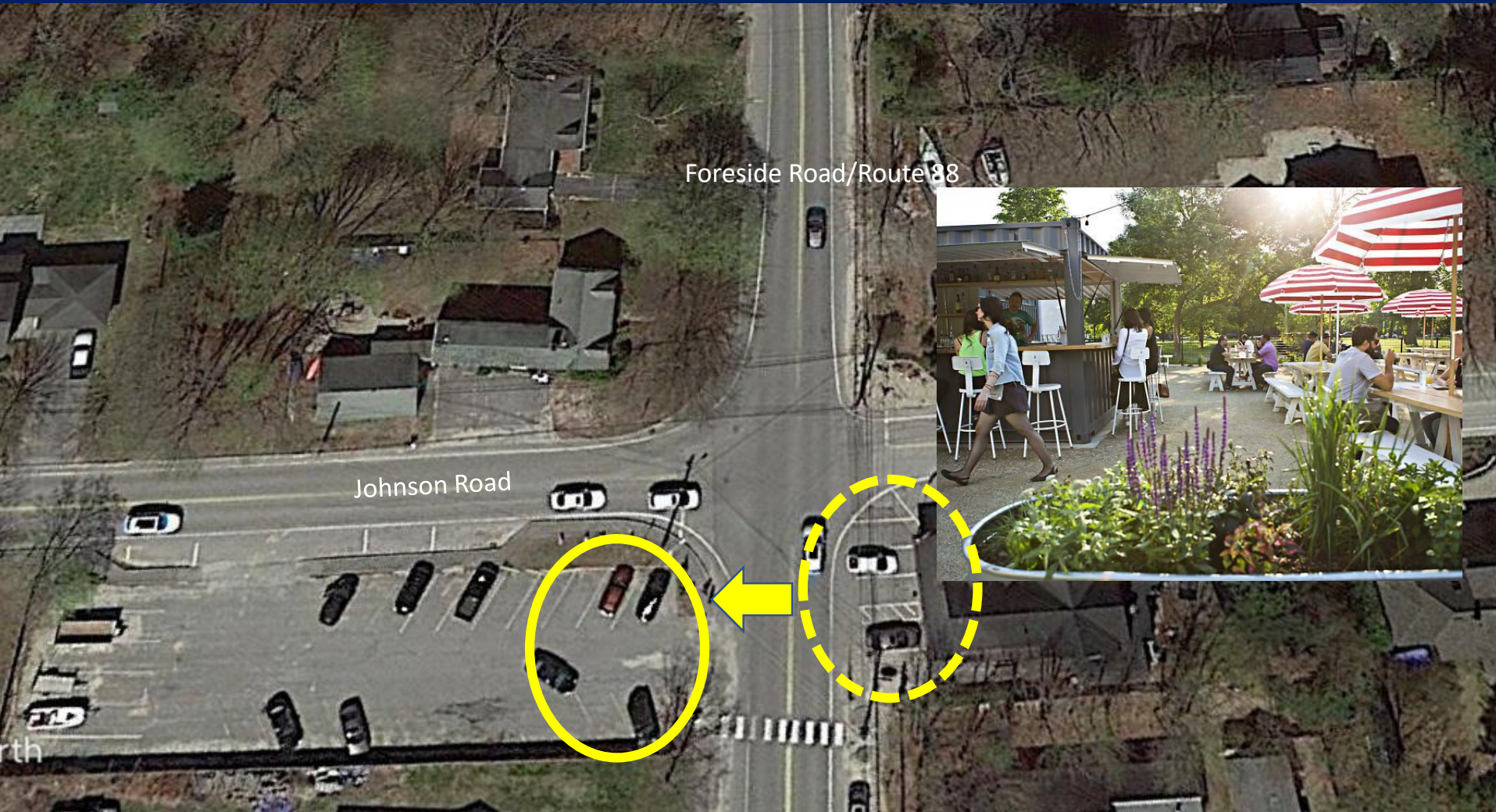
# Create parallel parking at Town Landing Market + reserve 15-minute spaces across the street?

1. I love this idea!
2. I like this idea
3. I don't know or don't have an opinion
4. I do not like this idea
5. I do not like this idea at all!



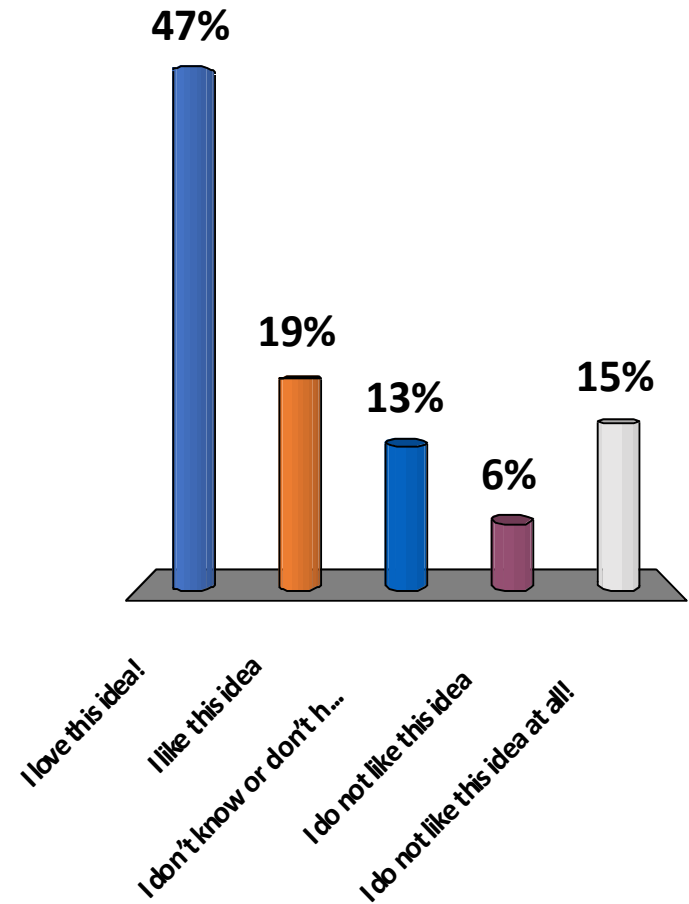


Eliminate Town Landing Market parking, create more outdoor seating instead & reserve displaced store parking across street



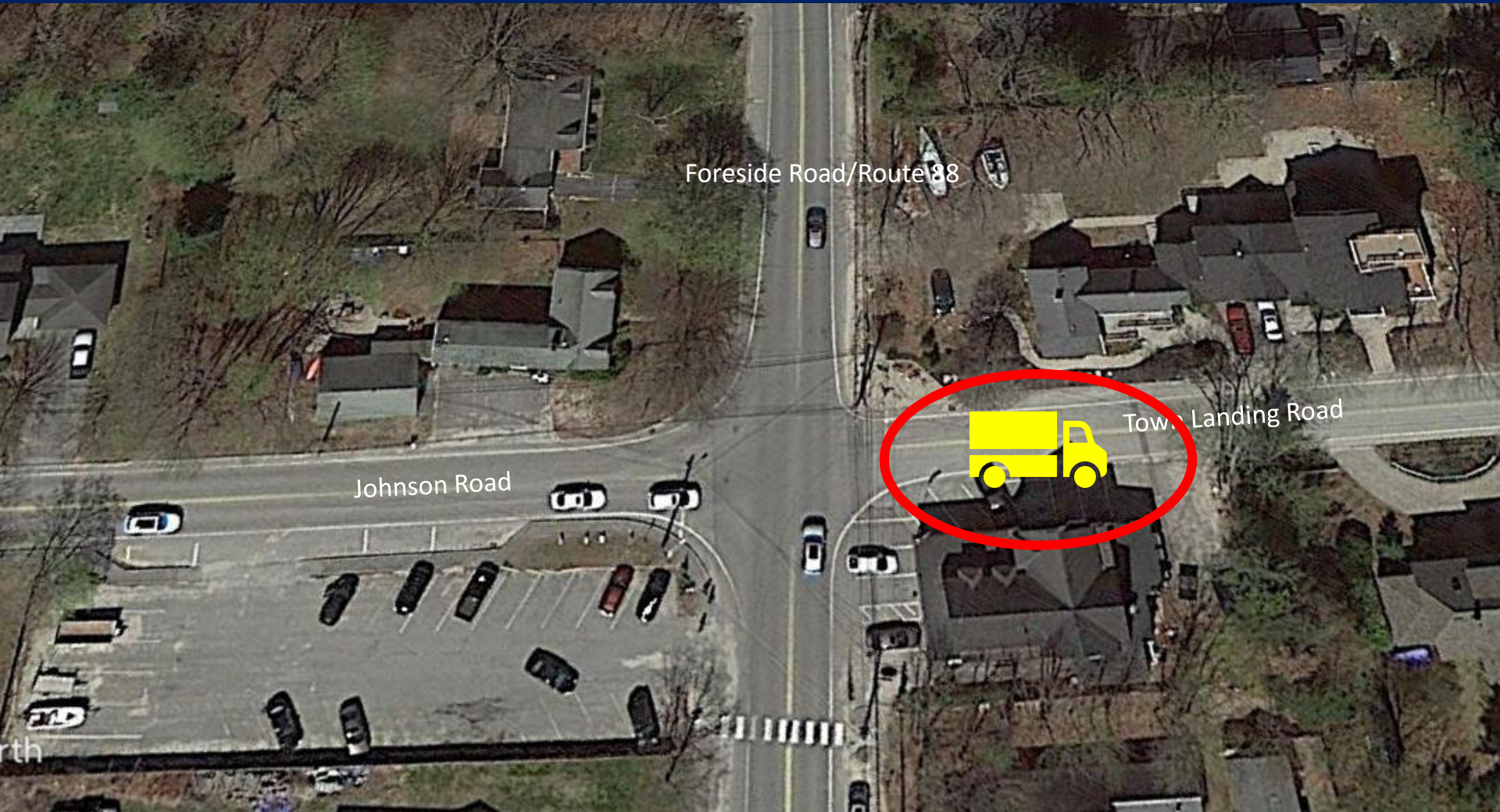
Eliminate Town Landing Market parking, create more outdoor seating instead & reserve displaced store parking across street?

1. I love this idea!
2. I like this idea
3. I don't know or don't have an opinion
4. I do not like this idea
5. I do not like this idea at all!



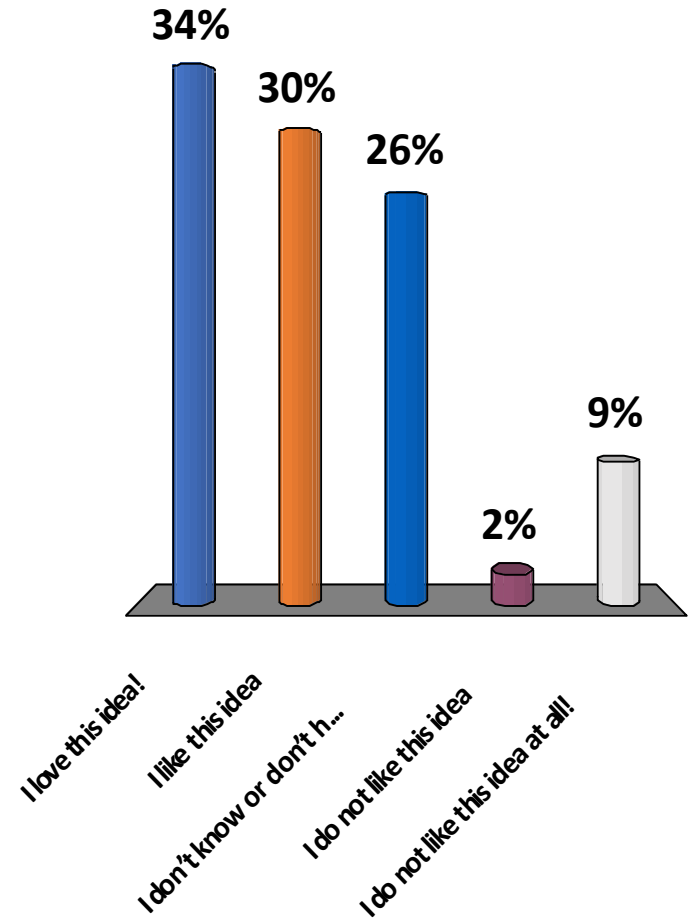


# Create designated unloading space for Town Landing Market



# Create designated unloading space for Town Landing Market?

1. I love this idea!
2. I like this idea
3. I don't know or don't have an opinion
4. I do not like this idea
5. I do not like this idea at all!



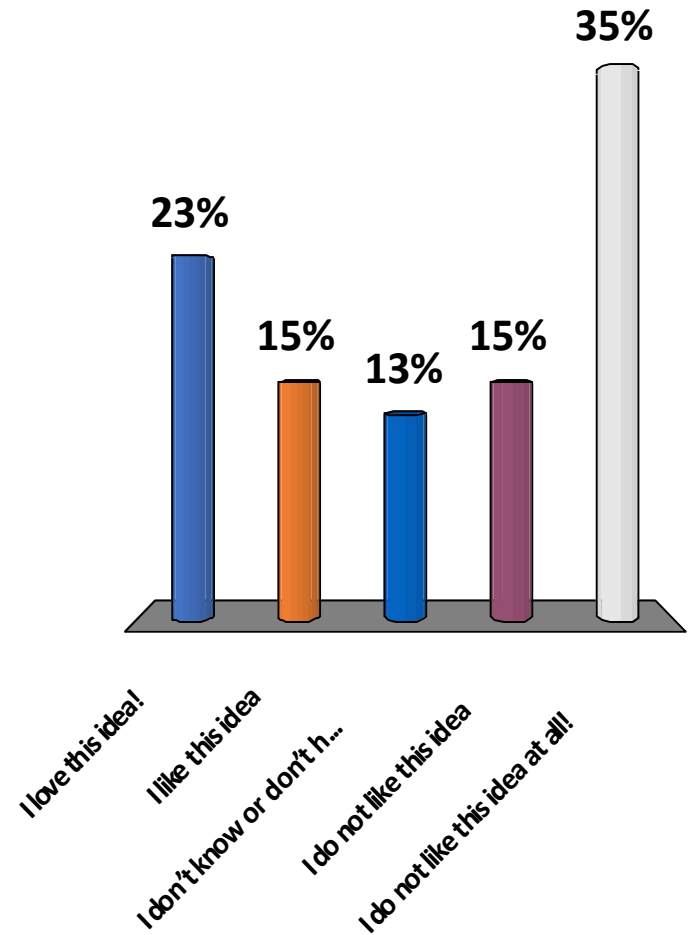


# Install “Mini” Roundabout with plantings in center of intersection



# Install “Mini” Roundabout with plantings in center of intersection?

1. I love this idea!
2. I like this idea
3. I don't know or don't have an opinion
4. I do not like this idea
5. I do not like this idea at all!



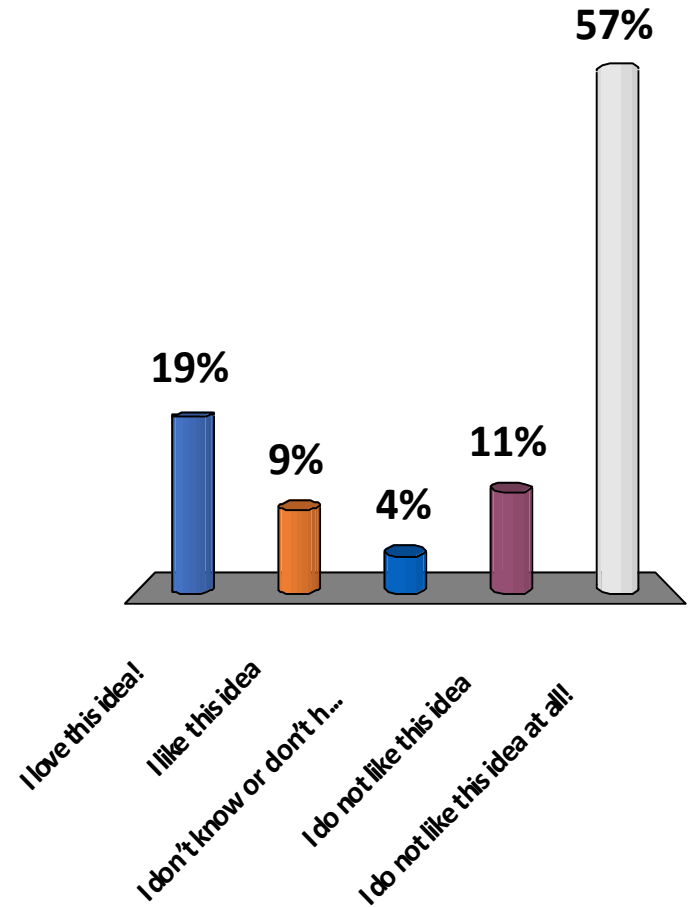


# Create painted image in center of intersection



# Create painted image in center of intersection?

1. I love this idea!
2. I like this idea
3. I don't know or don't have an opinion
4. I do not like this idea
5. I do not like this idea at all!





# Depot Road Intersection





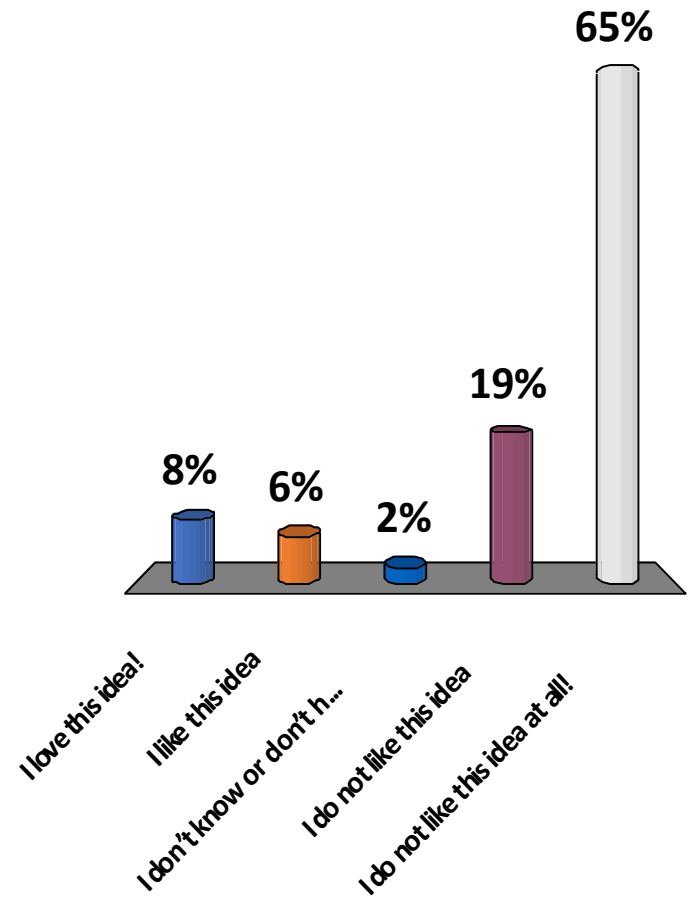
# Add Traffic Light





# Add Traffic Light?

1. I love this idea!
2. I like this idea
3. I don't know or don't have an opinion
4. I do not like this idea
5. I do not like this idea at all!



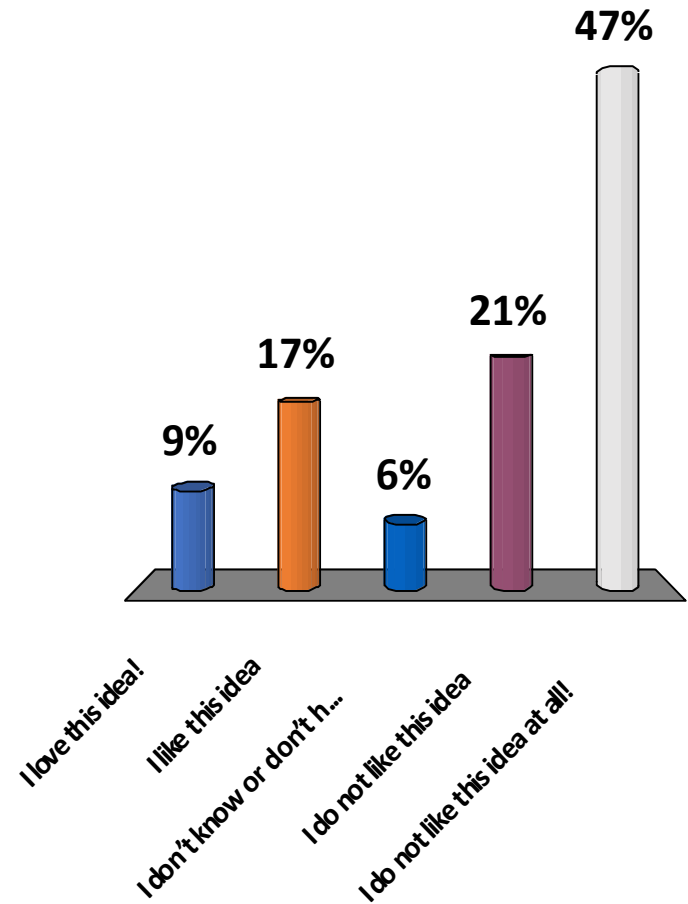
# Add Yellow Blinking Light





# Add Yellow Blinking Light?

1. I love this idea!
2. I like this idea
3. I don't know or don't have an opinion
4. I do not like this idea
5. I do not like this idea at all!



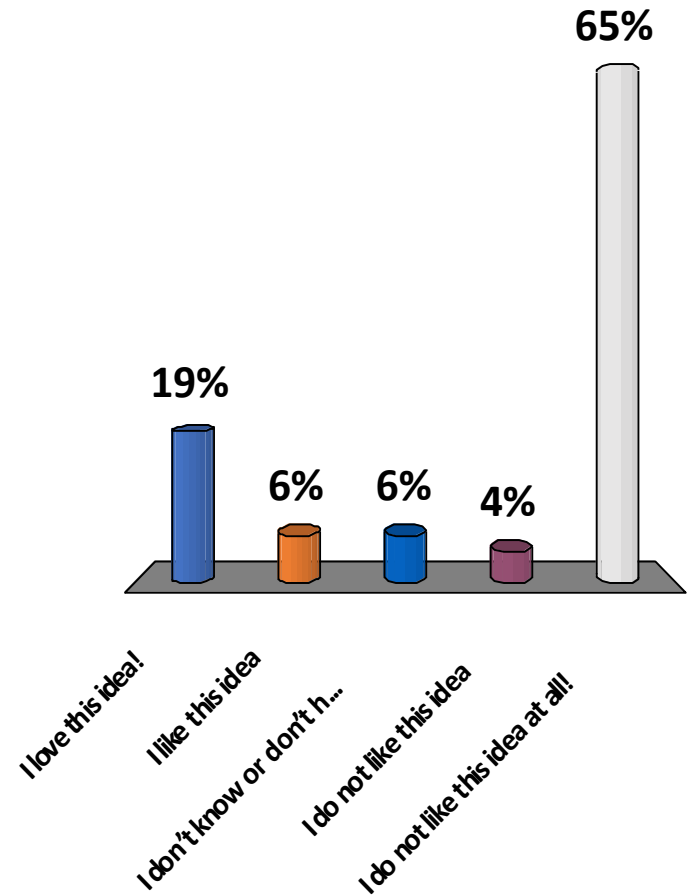
# Add 3-way stop signs





# Add 3-way stop signs?

1. I love this idea!
2. I like this idea
3. I don't know or don't have an opinion
4. I do not like this idea
5. I do not like this idea at all!



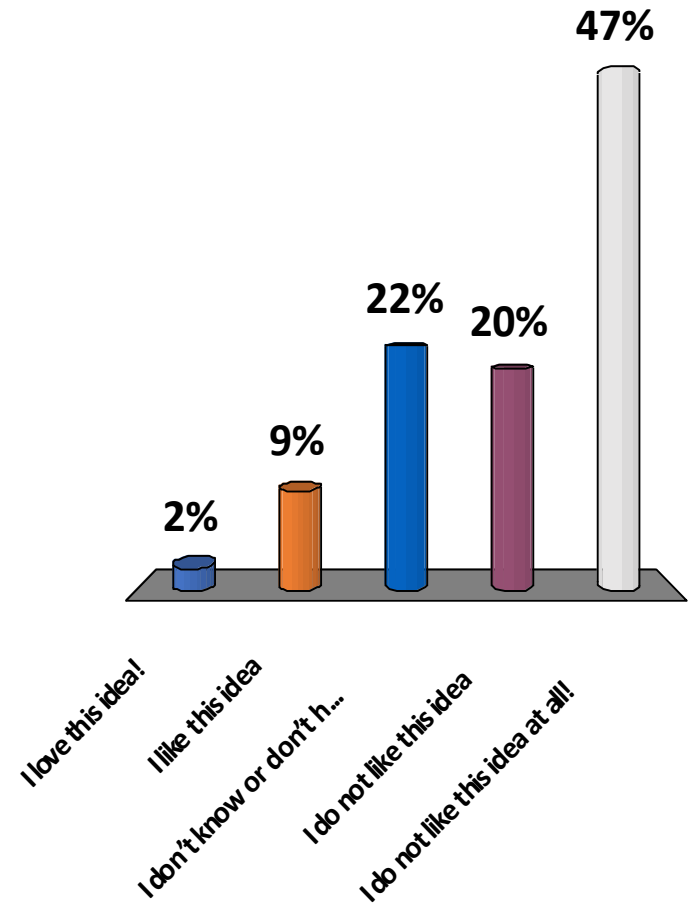
# Add “Dangerous Intersection” Sign on Route 88 approach





# Add “Dangerous Intersection” Sign on Route 88 approach?

1. I love this idea!
2. I like this idea
3. I don't know or don't have an opinion
4. I do not like this idea
5. I do not like this idea at all!



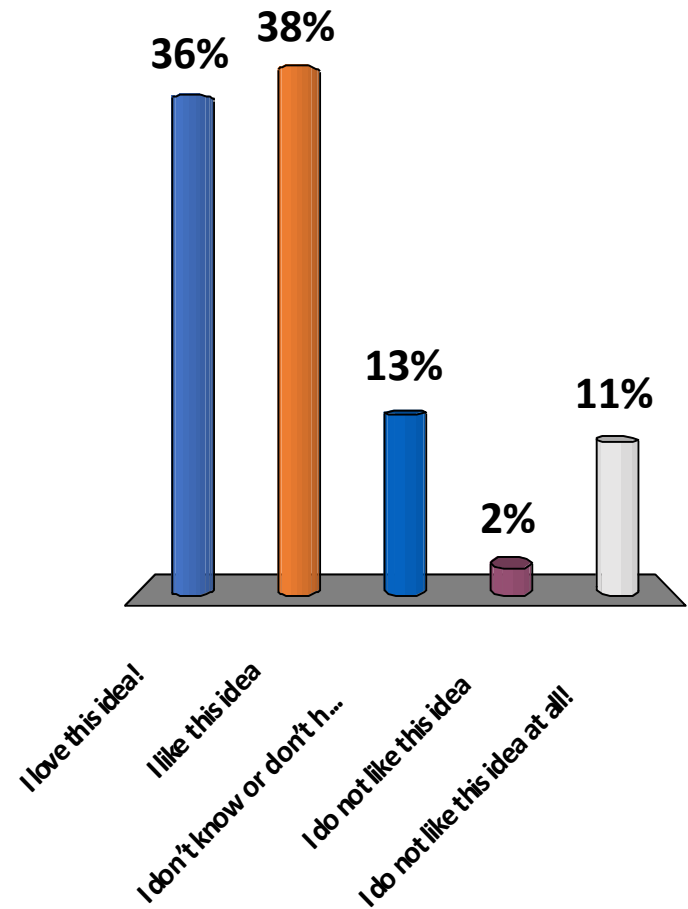
# Add crosswalk and “pedestrian crossing” warning signs



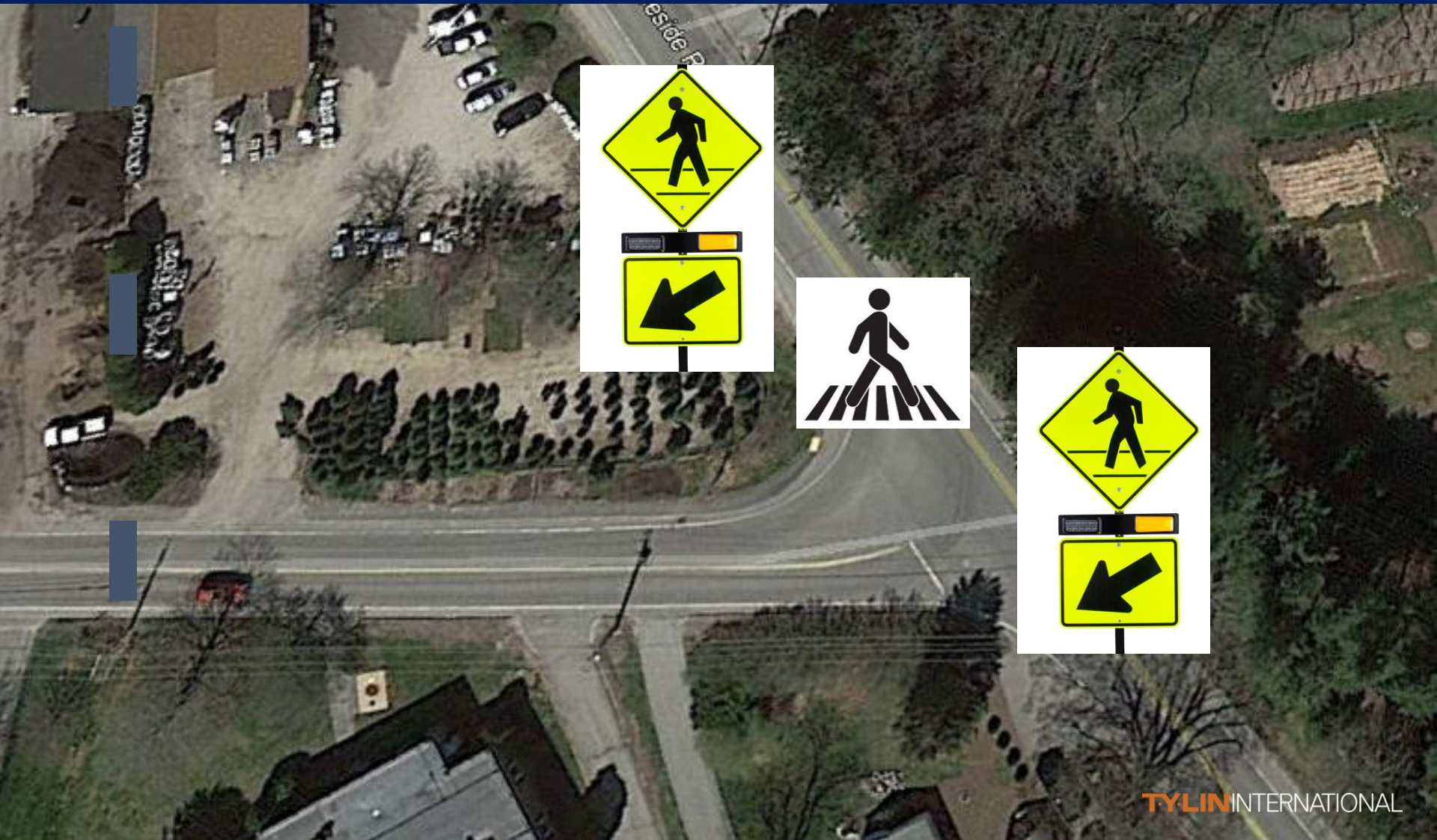


# Add crosswalk and “pedestrian crossing” warning signs?

1. I love this idea!
2. I like this idea
3. I don't know or don't have an opinion
4. I do not like this idea
5. I do not like this idea at all!



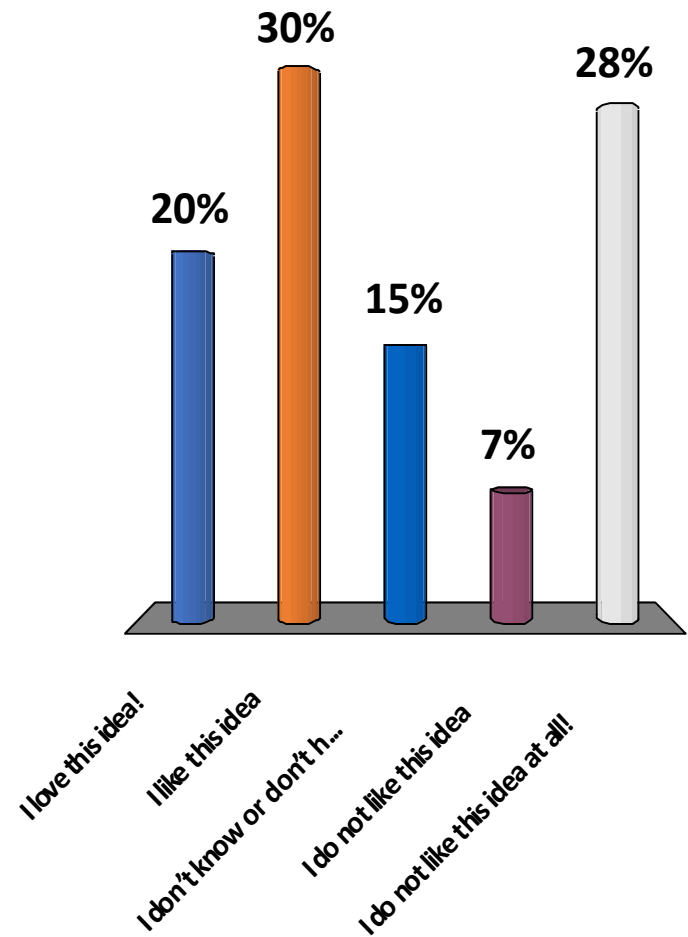
# Install push-button flashing beacon at crosswalk





# Install push-button flashing beacon at crosswalk ?

1. I love this idea!
2. I like this idea
3. I don't know or don't have an opinion
4. I do not like this idea
5. I do not like this idea at all!



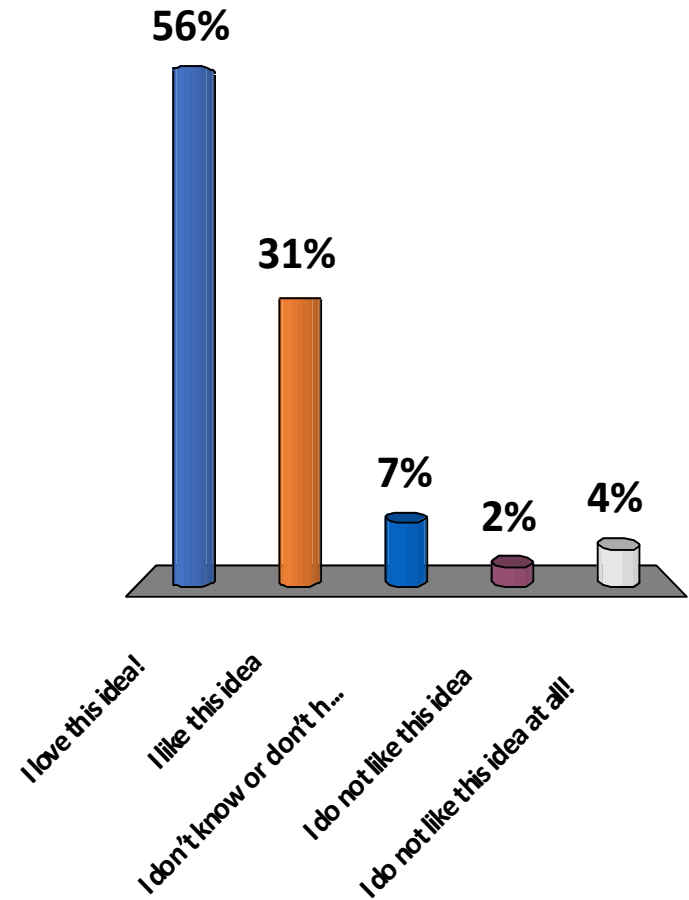
# Add crosswalk and sidewalk on Route 88 to Skillins





# Add crosswalk and sidewalk on Route 88 to Skillins?

1. I love this idea!
2. I like this idea
3. I don't know or don't have an opinion
4. I do not like this idea
5. I do not like this idea at all!



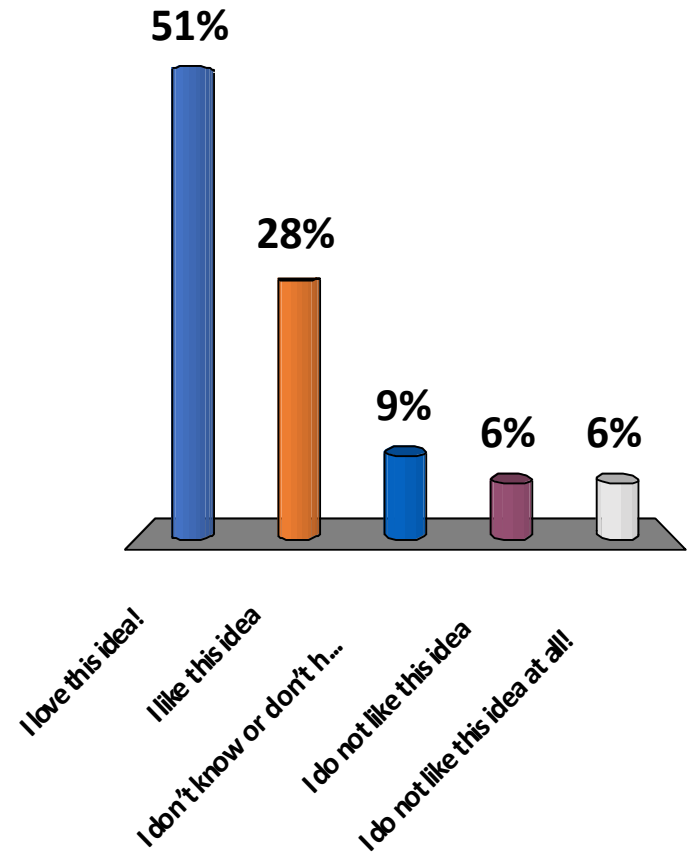
# Add striped, signed bike lanes on Rt 88





# Add striped, signed bike lanes on Rt 88?

1. I love this idea!
2. I like this idea
3. I don't know or don't have an opinion
4. I do not like this idea
5. I do not like this idea at all!



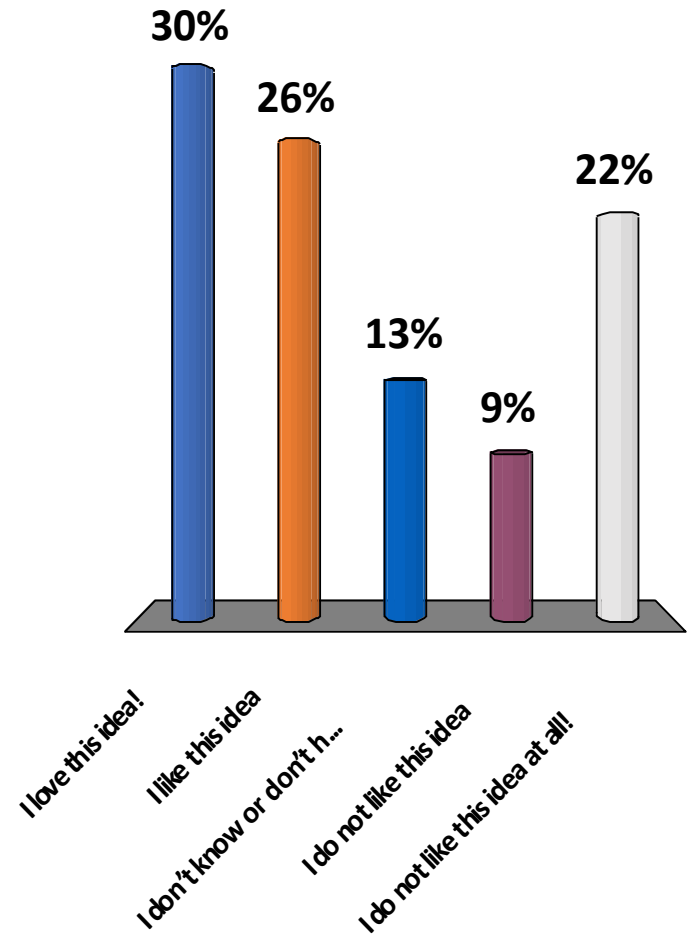
# Add additional streetlights at intersection





# Add additional streetlights at intersection?

1. I love this idea!
2. I like this idea
3. I don't know or don't have an opinion
4. I do not like this idea
5. I do not like this idea at all!



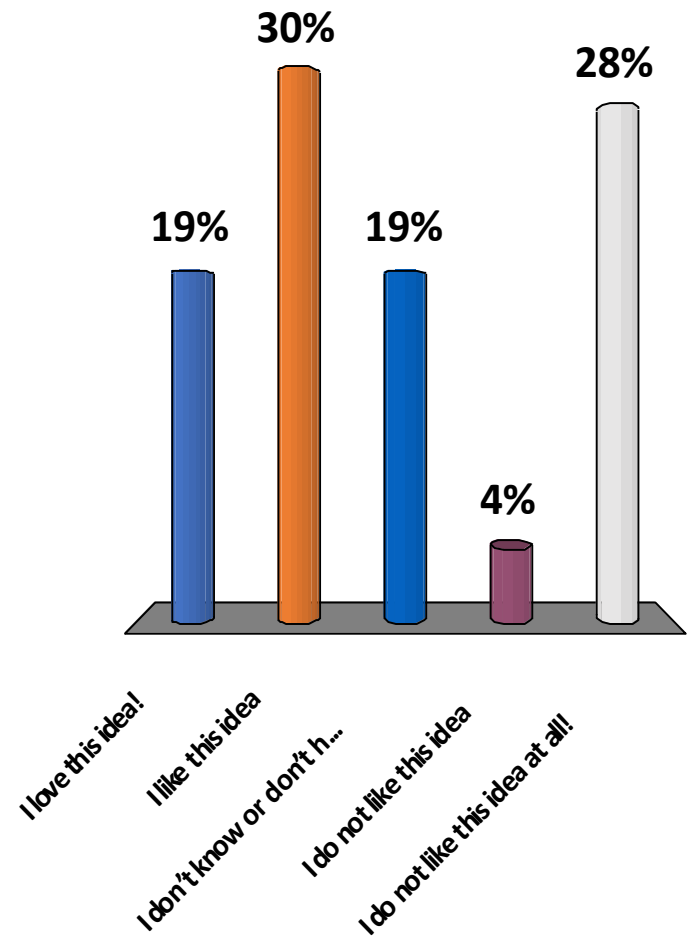
# Realign Depot Road to create 90-degree intersection





# Realign Depot Road to create 90-degree intersection?

1. I love this idea!
2. I like this idea
3. I don't know or don't have an opinion
4. I do not like this idea
5. I do not like this idea at all!



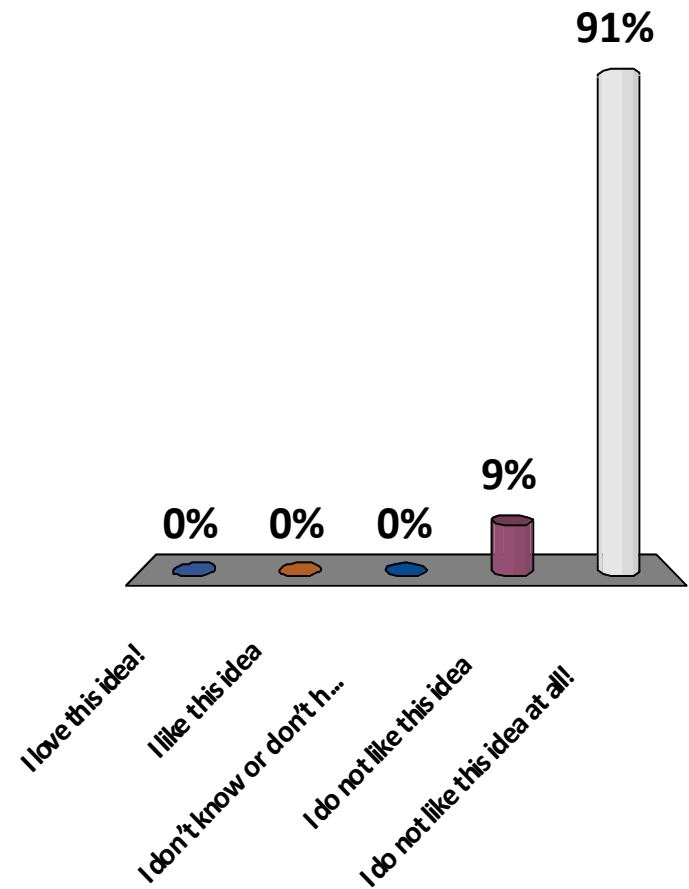
Add “road narrows” signs at intersection, and narrow travel lanes by adding plastic bollards





# Add “road narrows” signs at intersection, and narrow travel lanes by adding plastic bollards?

1. I love this idea!
2. I like this idea
3. I don't know or don't have an opinion
4. I do not like this idea
5. I do not like this idea at all!



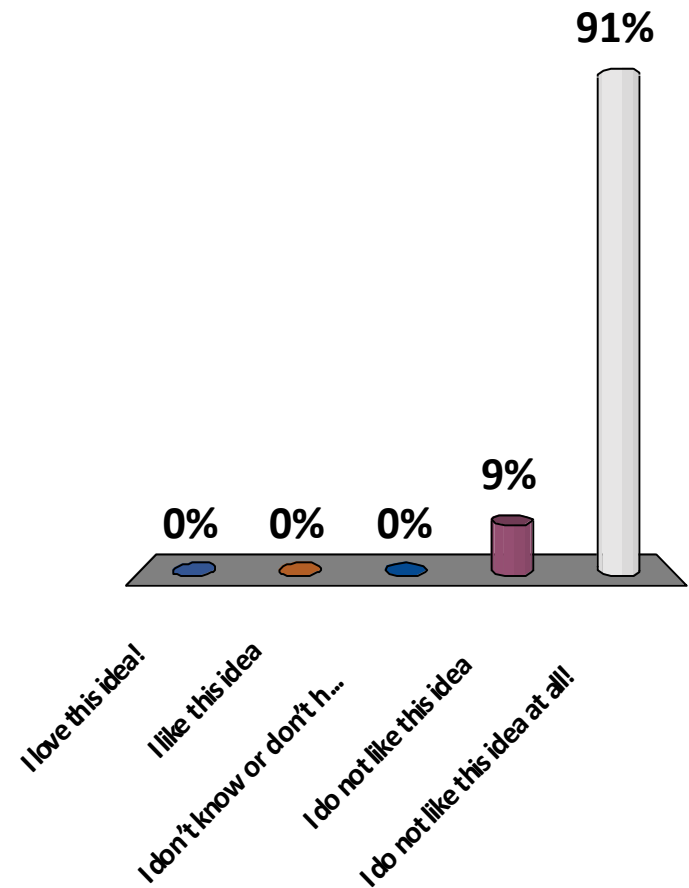
# Narrow travel lanes on Rt 88 with flexible bollards on approach of intersection





# Narrow travel lanes on Rt 88 with flexible bollards on approach of intersection?

1. I love this idea!
2. I like this idea
3. I don't know or don't have an opinion
4. I do not like this idea
5. I do not like this idea at all!



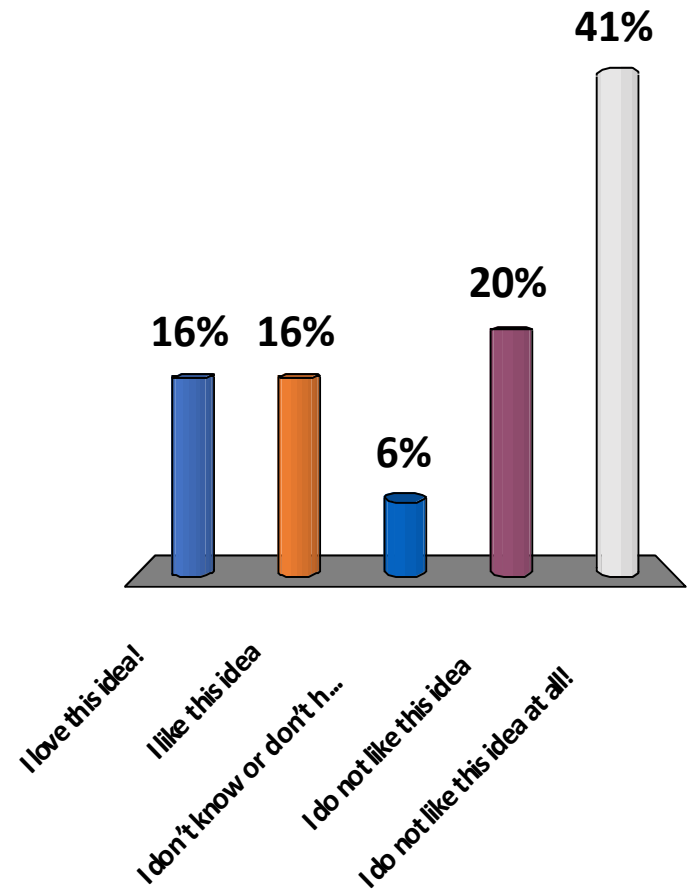
# Install median island adjacent to intersection on Route 88



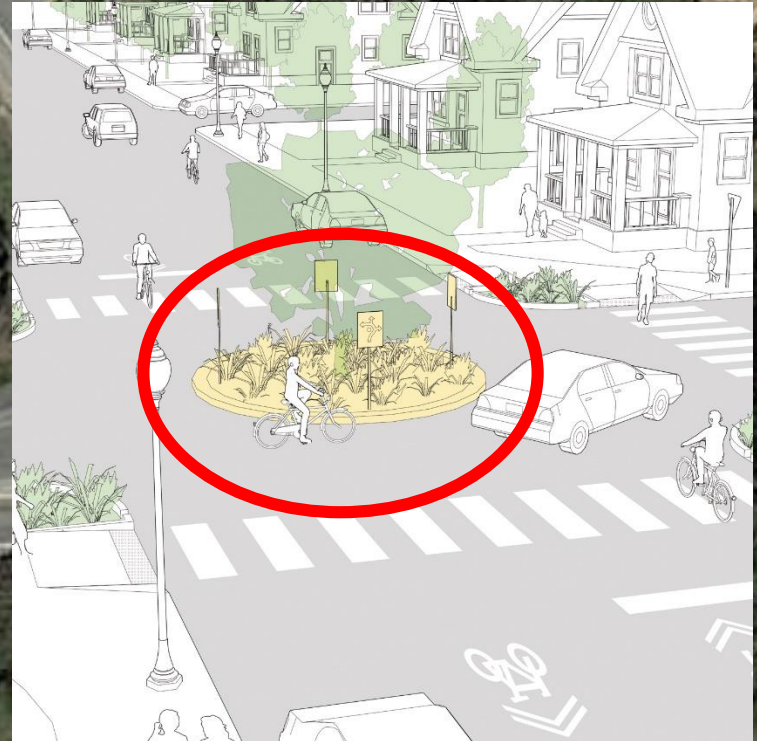


# Install median island adjacent to intersection on Route 88 ?

1. I love this idea!
2. I like this idea
3. I don't know or don't have an opinion
4. I do not like this idea
5. I do not like this idea at all!



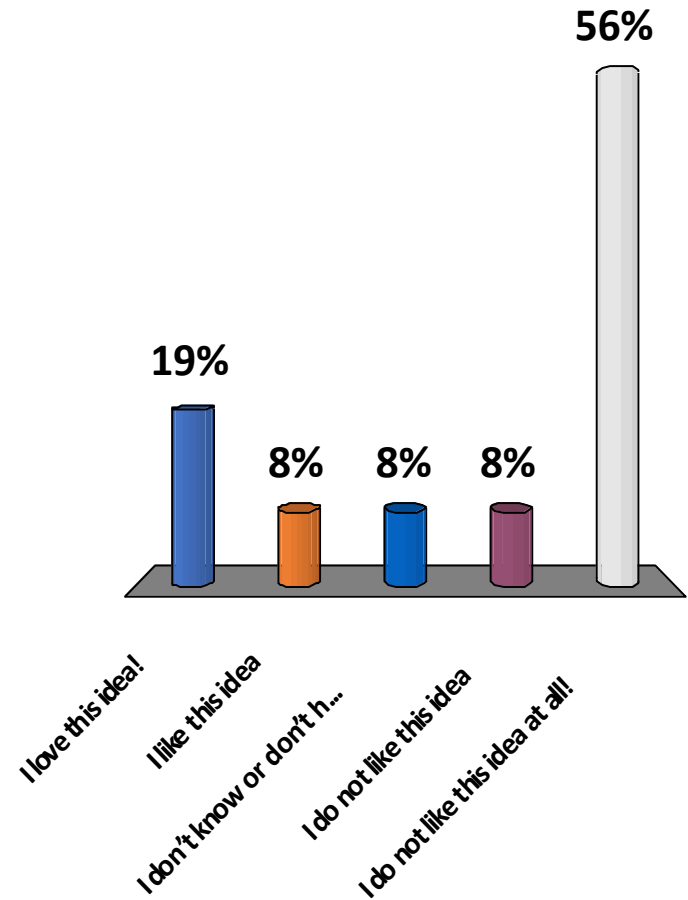
# Install “Mini” Roundabout with plantings





# Install “Mini” Roundabout with plantings?

1. I love this idea!
2. I like this idea
3. I don't know or don't have an opinion
4. I do not like this idea
5. I do not like this idea at all!



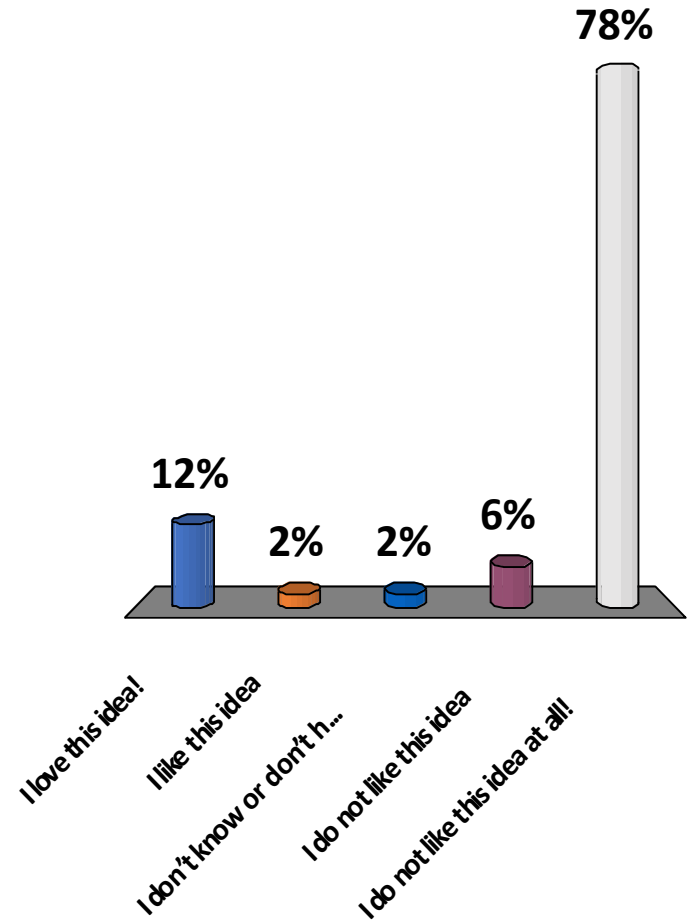
# Create painted image in center of intersection





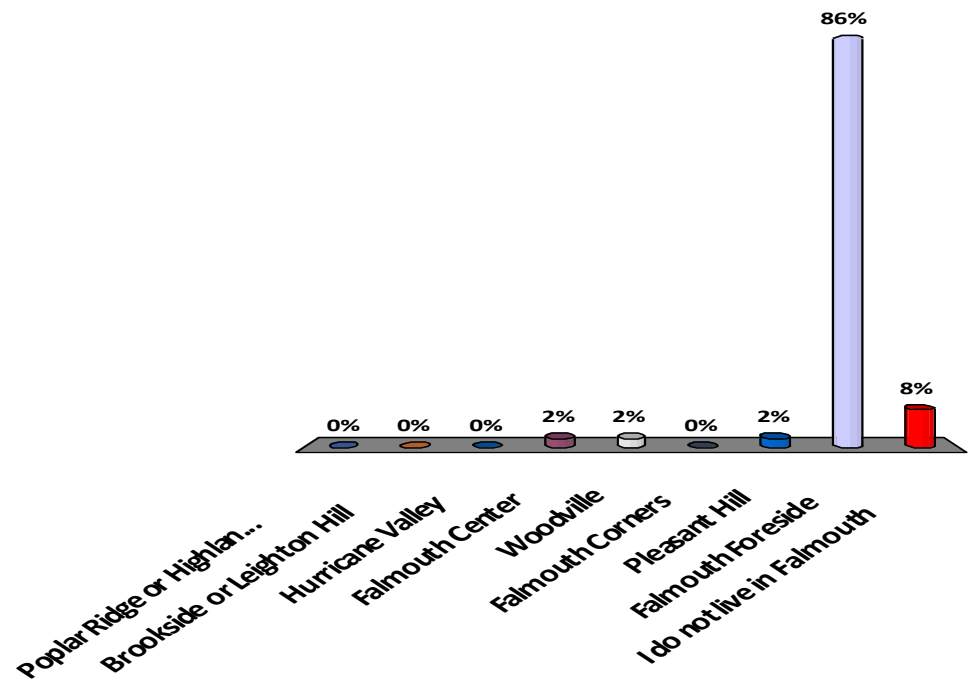
# Create painted image in center of intersection?

1. I love this idea!
2. I like this idea
3. I don't know or don't have an opinion
4. I do not like this idea
5. I do not like this idea at all!



# Where do you live?

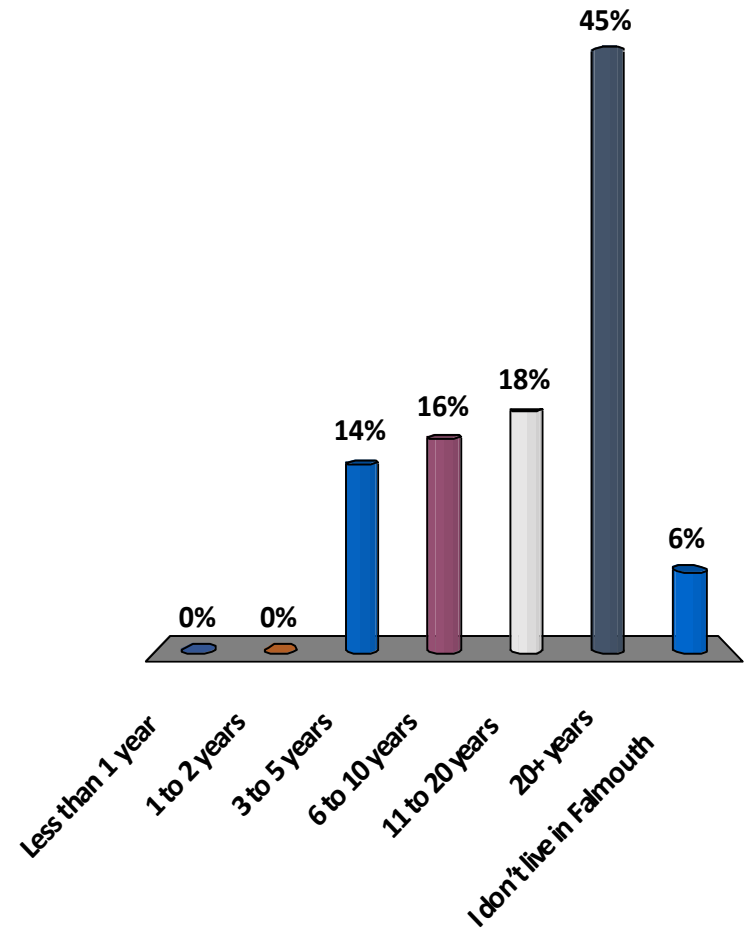
1. Poplar Ridge or Highland Lake area
2. Brookside or Leighton Hill
3. Hurricane Valley
4. Falmouth Center
5. Woodville
6. Falmouth Corners
7. Pleasant Hill
8. Falmouth Foreside
9. I do not live in Falmouth





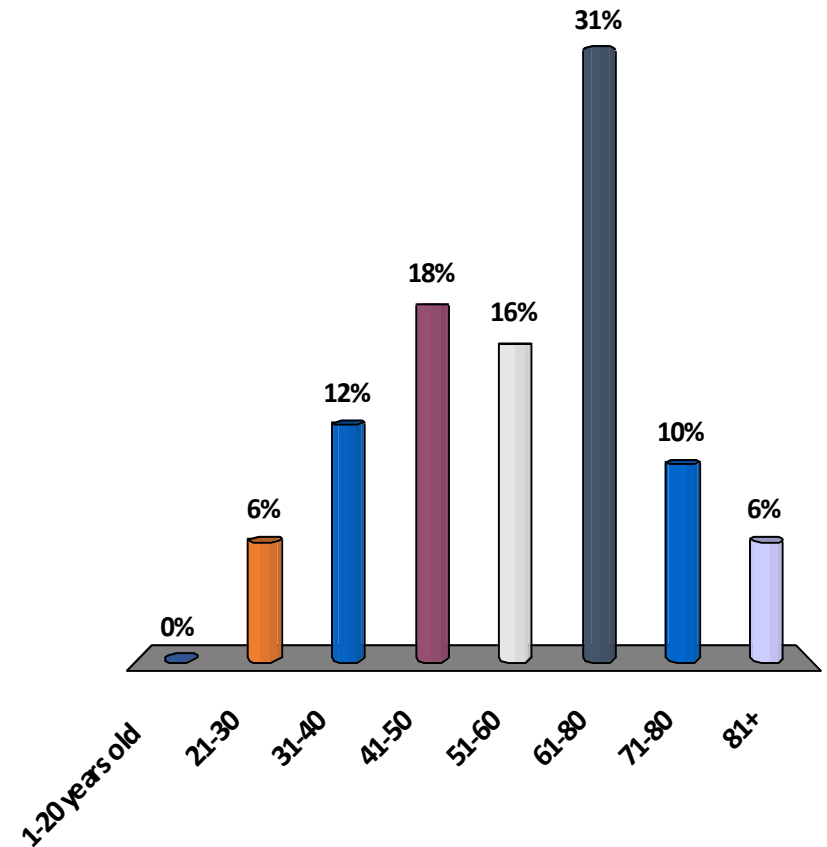
# How long have you lived in Falmouth?

1. Less than 1 year
2. 1 to 2 years
3. 3 to 5 years
4. 6 to 10 years
5. 11 to 20 years
6. 20+ years
7. I don't live in Falmouth



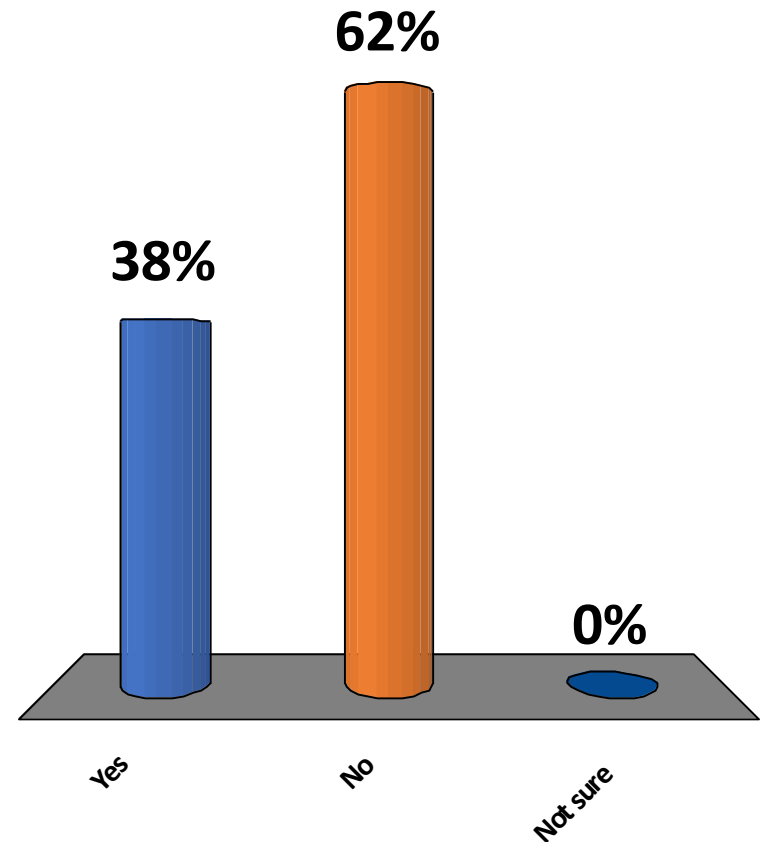
# In what age category do you fall?

1. 1-20 years old
2. 21-30
3. 31-40
4. 41-50
5. 51-60
6. 61-80
7. 71-80
8. 81+



# Do you or your family currently own a mooring in Falmouth?

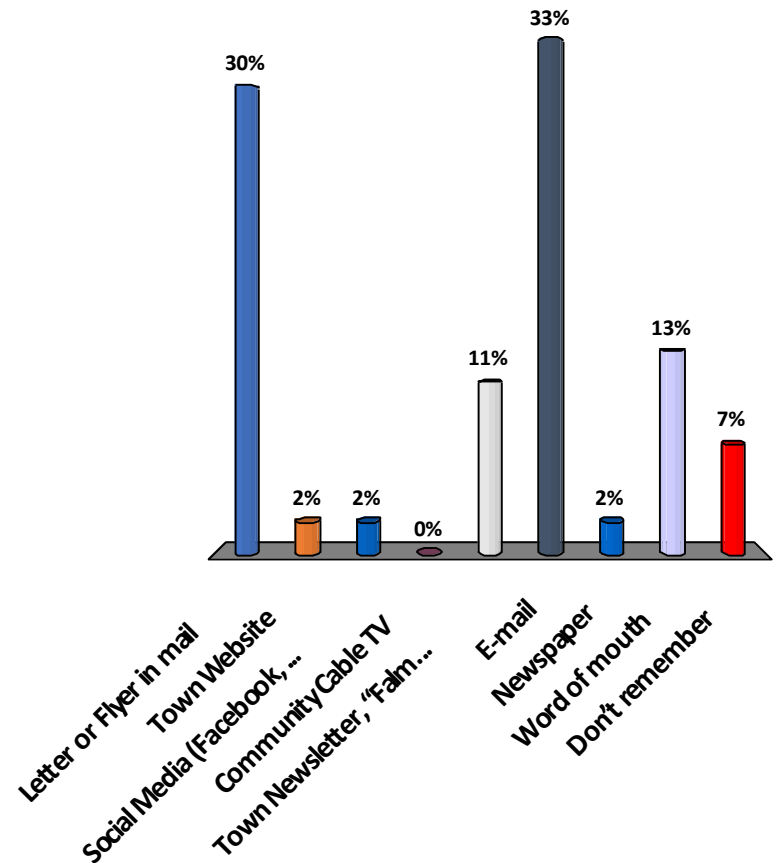
1. Yes
2. No
3. Not sure





# How did you first hear about tonight's forum?

1. Letter or Flyer in mail
2. Town Website
3. Social Media (Facebook, Twitter)
4. Community Cable TV
5. Town Newsletter, "Falmouth Focus"
6. E-mail
7. Newspaper
8. Word of mouth
9. Don't remember



What are  
the next  
steps in  
this  
project?



# Do you have an idea that was not listed or discussed tonight?

- We want to hear about it!
- Please complete a feedback form and leave it with staff
- Or send an e-mail to Maggie Fleming,  
[mfleming@falmouthme.org](mailto:mfleming@falmouthme.org)

## Thank you for your participation!