

# Falmouth Visioning Process



# Online Engagement

3



Judy ▾



2040 Comprehensive Plan

Comp Plan 101

Participate

Elements

Data

Documents

County's Homepage

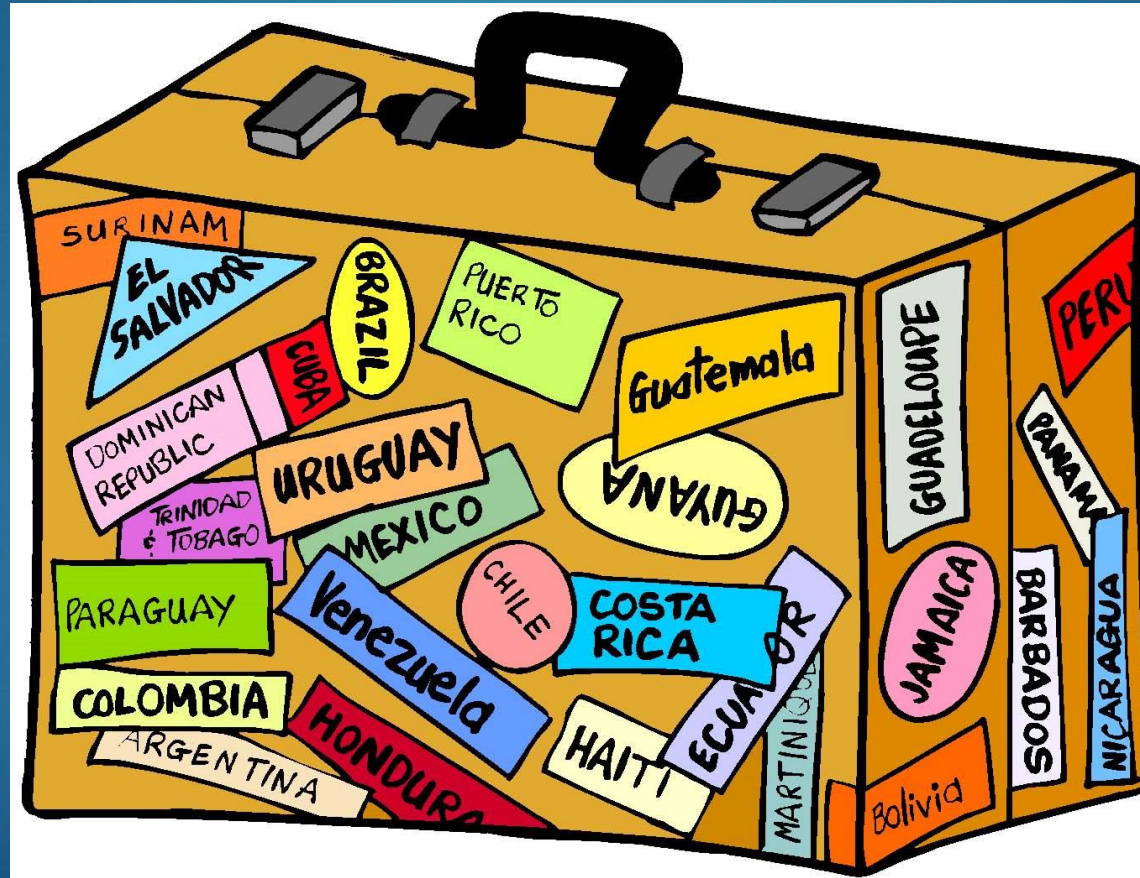
More ▾



# Washington County, Maryland

Your County - Your Vision - Your Future - 2040

# Meetings in a Box



This Photo by Unknown Author is licensed under [CC BY-NC](https://creativecommons.org/licenses/by-nc/4.0/)



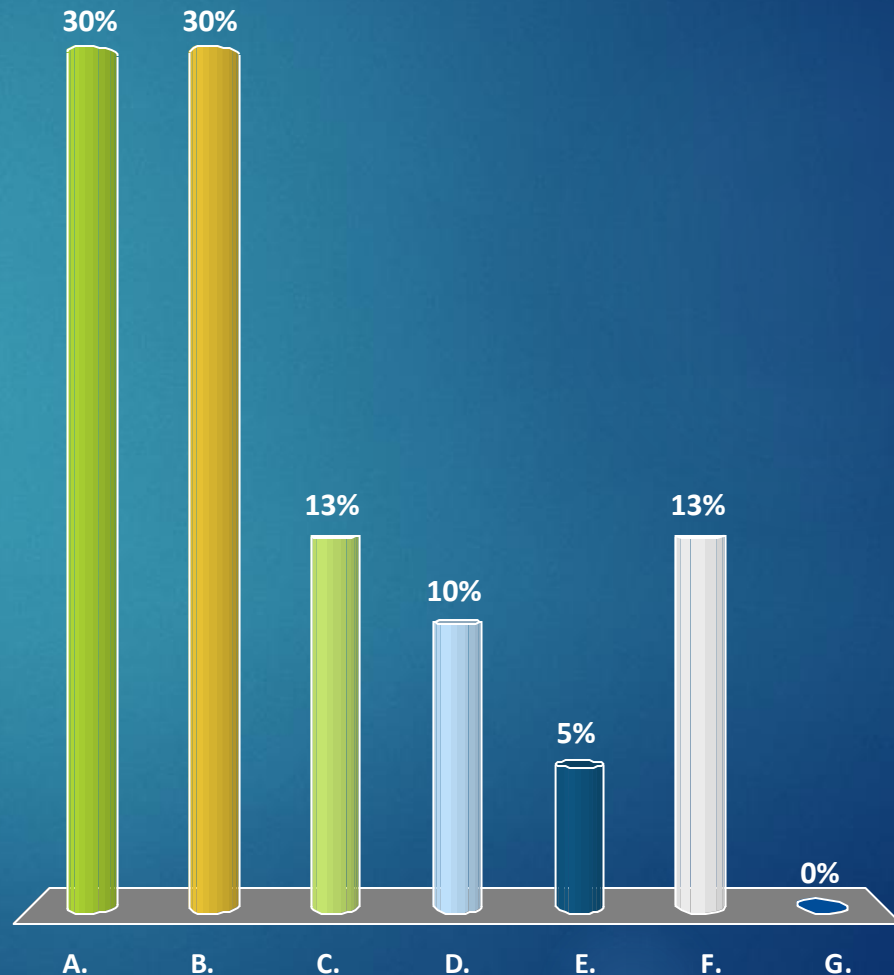
# Keypad Polling/Public Meetings



Residential Growth should be directed to specific growth areas in town.

- A. Strongly Agree
- B. Agree
- C. Somewhat Agree
- D. Neutral
- E. Somewhat Disagree
- F. Disagree
- G. Strongly Disagree

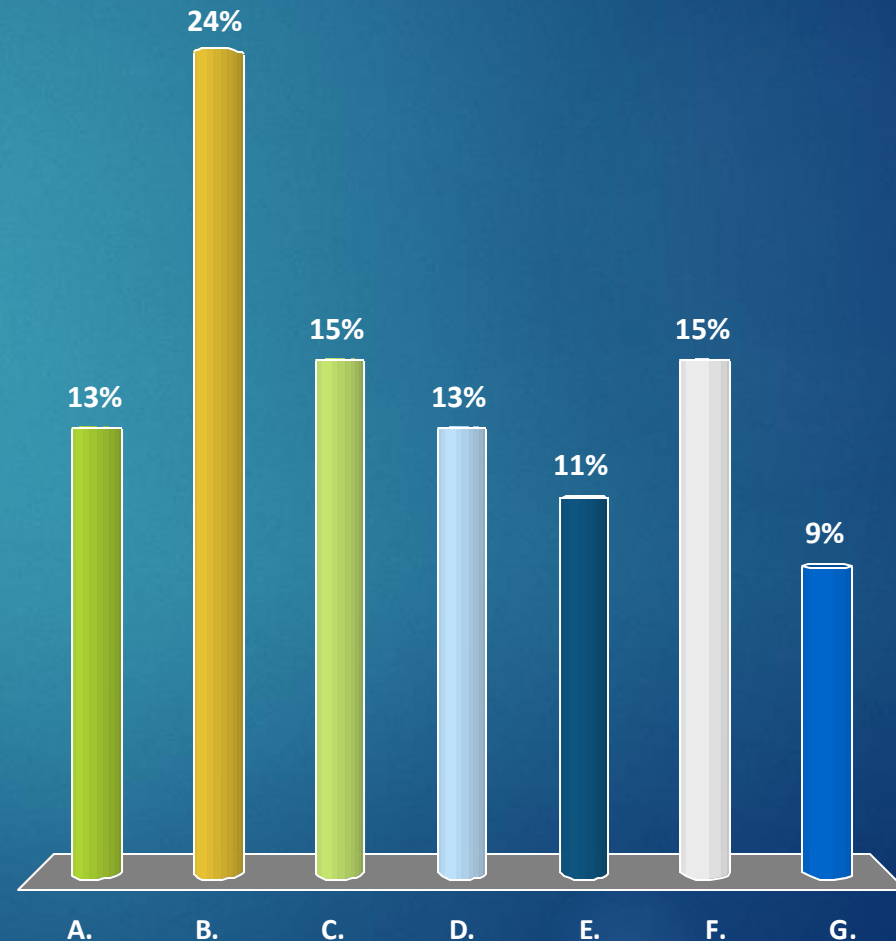
Response  
Counter



# Which factors of future residential development are most important to you? (vote for your top 2)

- A. Developing/Maintaining Neighborhoods
- B. Access to Green Spaces
- C. Affordability
- D. Sustainability
- E. Diversity of housing type (Single Family, Condo, Multifamily)
- F. Walkability
- G. None, I don't want any future residential development

Response  
Counter

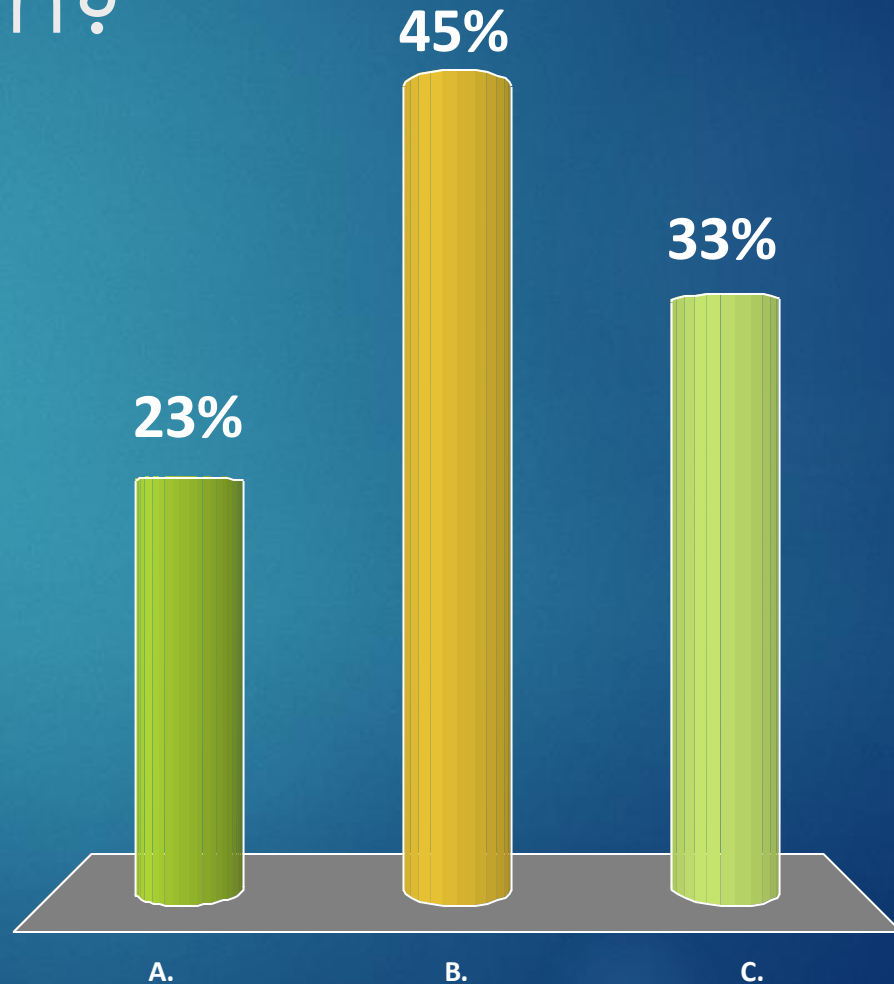




How would you prefer to accommodate future population growth?

- A. Increase density
- B. Increase multifamily units (apartments, condos)
- C. Development of vacant parcels

0 of 43



# Comparing Impacts

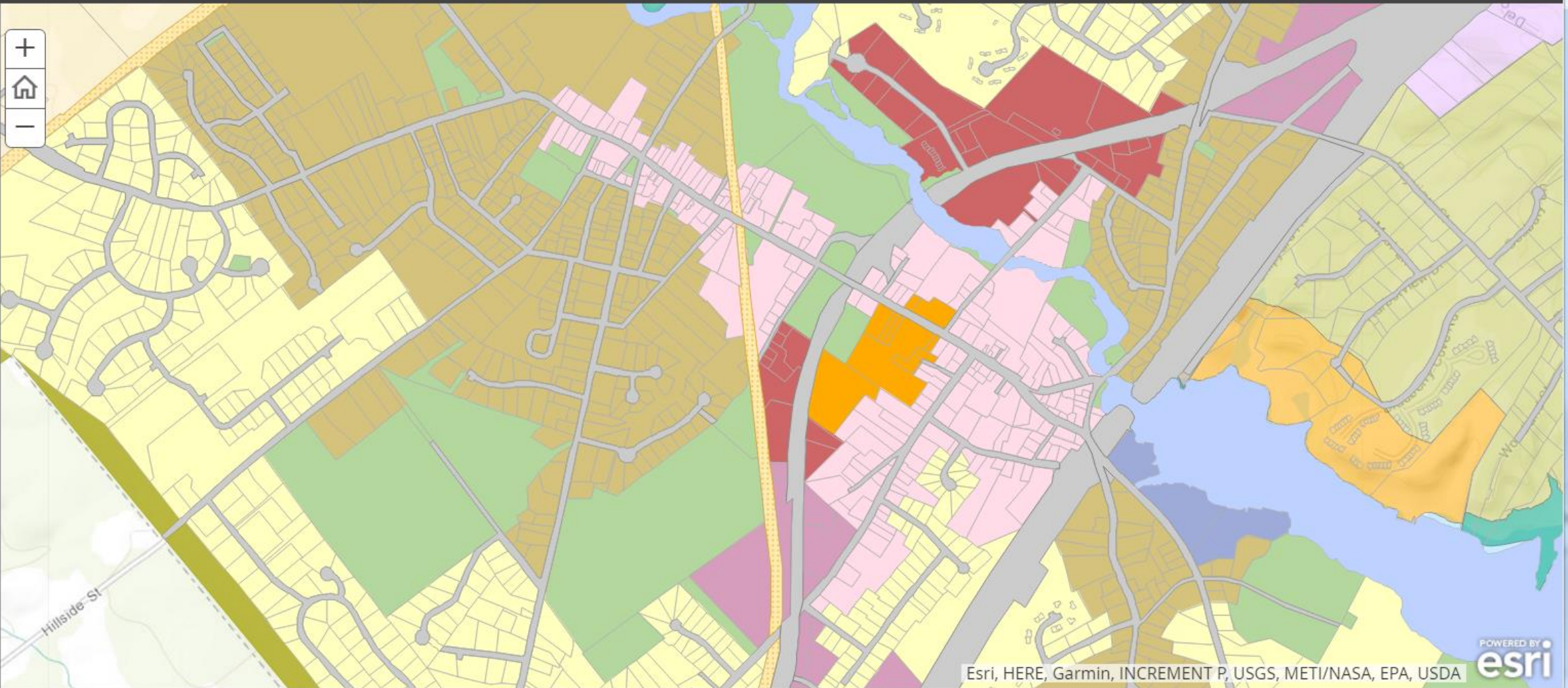
- ▶ Understanding tradeoffs of various policy options.
- ▶ Allowing discussion to focus on areas of true disagreement.
- ▶ Clearly explaining various options.

# Yarmouth Character Based Codes

Existing Zoning and Character Based Regulating Plan

Switch to builder mode

A story map

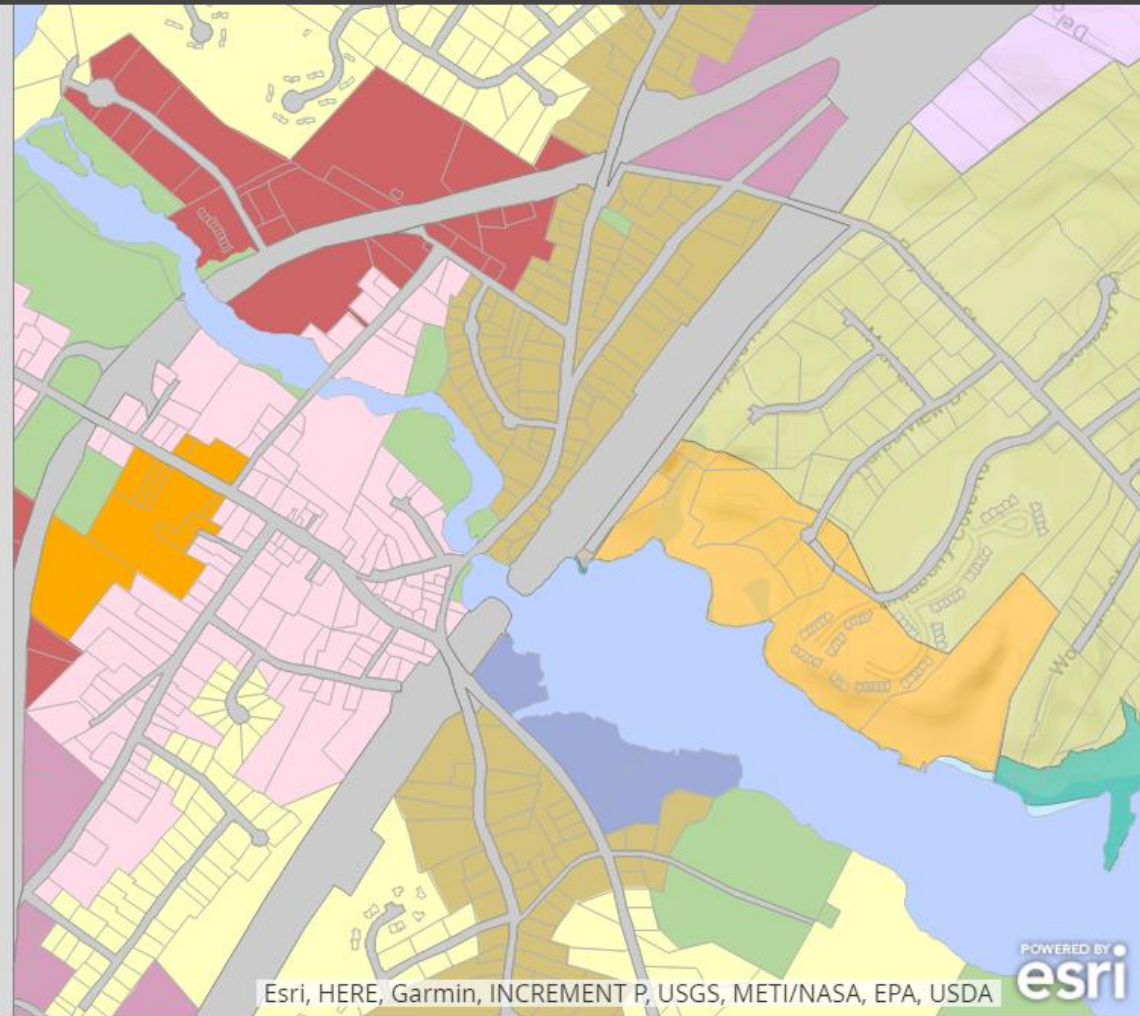
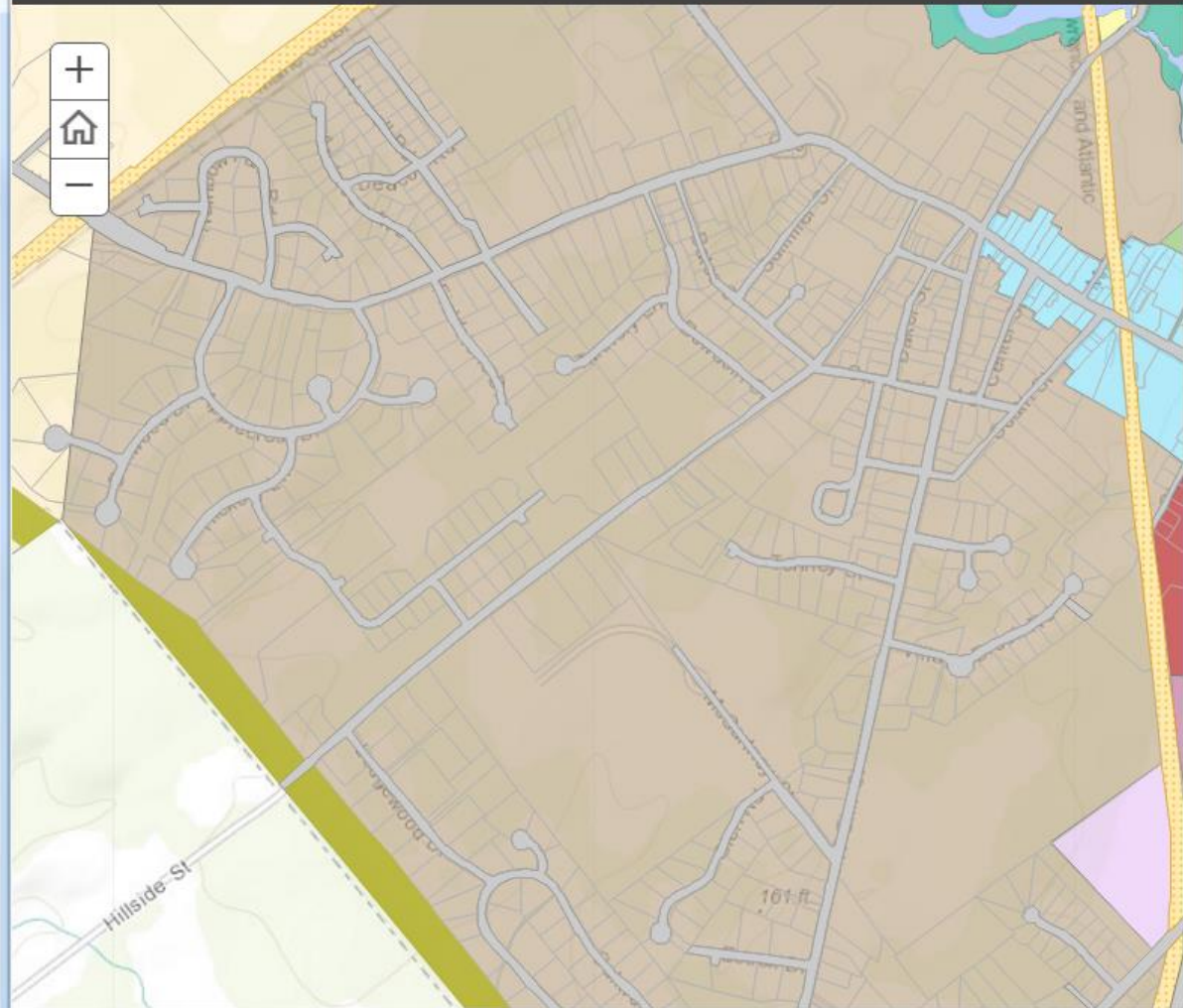


# Yarmouth Character Based Codes

Existing Zoning and Character Based Regulating Plan

Switch to builder mode

A story map



# Yarmouth Character Based Codes

Existing Zoning and Character Based Regulating Plan

Switch to builder mode

A story map

